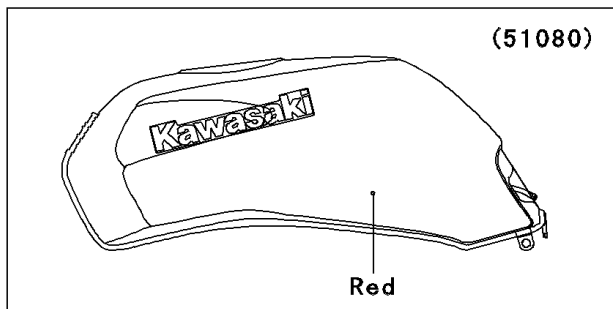
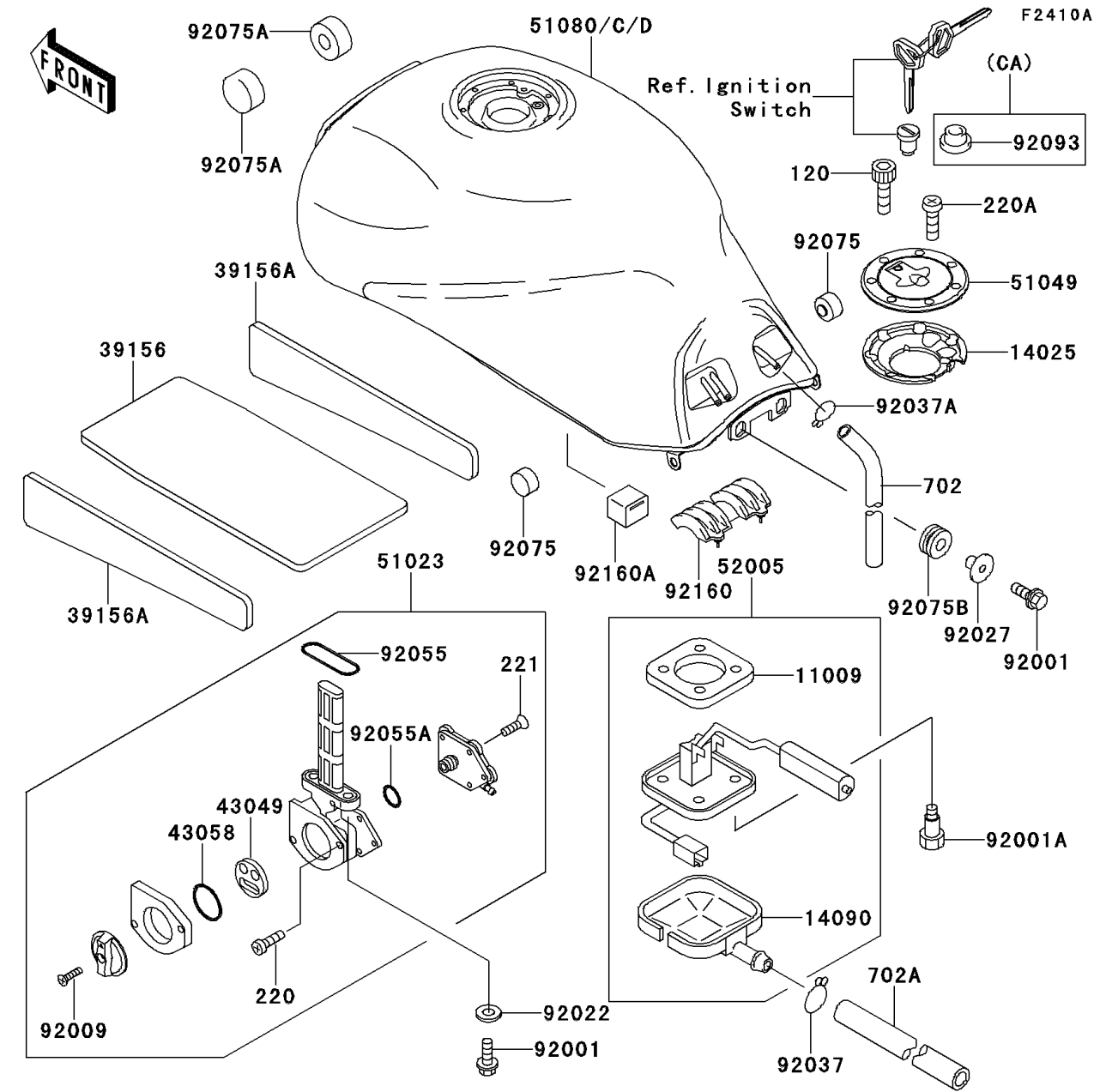
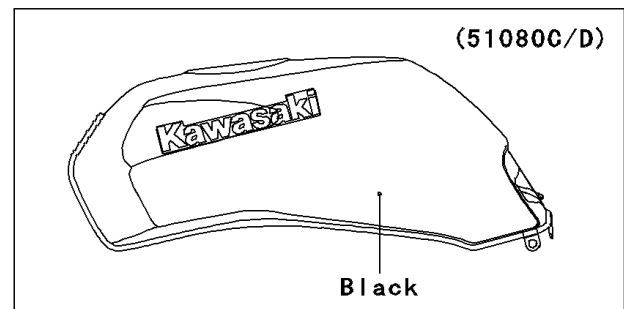


1997 GPZ 1100 PARTS DIAGRAM

Fuel Tank (ZX1100-E2/E3)



WD



WD

1997 GPZ 1100 PARTS LIST

Fuel Tank (ZX1100-E2/E3)

ITEM NAME	PART NUMBER	QUANTITY
BOLT-SOCKET (Ref # 120)	120S0512	1
SCREW-PAN-CROS (Ref # 220)	220B0308	1
SCREW-PAN-CROS (Ref # 220A)	220C0508	1
SCREW-CSK-CROS,4X14 (Ref # 221)	221B0414	1
TUBE-RUBBER,7X10X600 (Ref # 702)	702A07600	1
GASKET,FUEL GAUGE (Ref # 11009)	11009-1656	1
COVER,TANK CAP (Ref # 14025)	14025-1913	1
COVER,FUEL GAUGE (Ref # 14090)	14090-1624	1
PAD,FUEL TANK,CNT (Ref # 39156)	39156-1482	1
PAD,FUEL TANK (Ref # 39156A)	39156-1483	1
PACKING,TAP VALVE (Ref # 43049)	43049-1075	1
RING,TAP LEVER (Ref # 43058)	43058-1083	1
TAP-ASSY,FUEL (Ref # 51023)	51023-1219	1
CAP-TANK,FUEL (Ref # 51049)	51049-1091	1
TANK-COMP-FUEL,P.G.BLACK (Ref # 51080C)	51080-5228-RL	1
GAUGE,FUEL (Ref # 52005)	52005-1111	1
BOLT,6X25 (Ref # 92001)	92001-1524	1
BOLT,FUEL GAUGE (Ref # 92001A)	92001-1705	1
SCREW,4X12 (Ref # 92009)	92009-1742	1
WASHER,6.2X11X1.5 (Ref # 92022)	92022-183	1
COLLAR,L=13.1 (Ref # 92027)	92027-251	1
CLAMP,TUBE (Ref # 92037)	92037-147	1
CLAMP (Ref # 92037A)	92037-1712	1
RING-O,FUEL TAP PACKING (Ref # 92055)	92055-1112	1
RING-O (Ref # 92055A)	92055-1539	1
DAMPER (Ref # 92075)	92075-021	1
DAMPER,FUEL TANK (Ref # 92075A)	92075-101	1
DAMPER (Ref # 92075B)	92075-1690	1
DAMPER,FUEL TANK,CNT (Ref # 92160)	92160-1577	1

1997 GPZ 1100 PARTS LIST

Fuel Tank (ZX1100-E2/E3)

ITEM NAME	PART NUMBER	QUANTITY
DAMPER (Ref # 92160A)	92160-1626	1
TUBE-RUBBER,7X10X860 (Ref # 702A)	702A07860	1