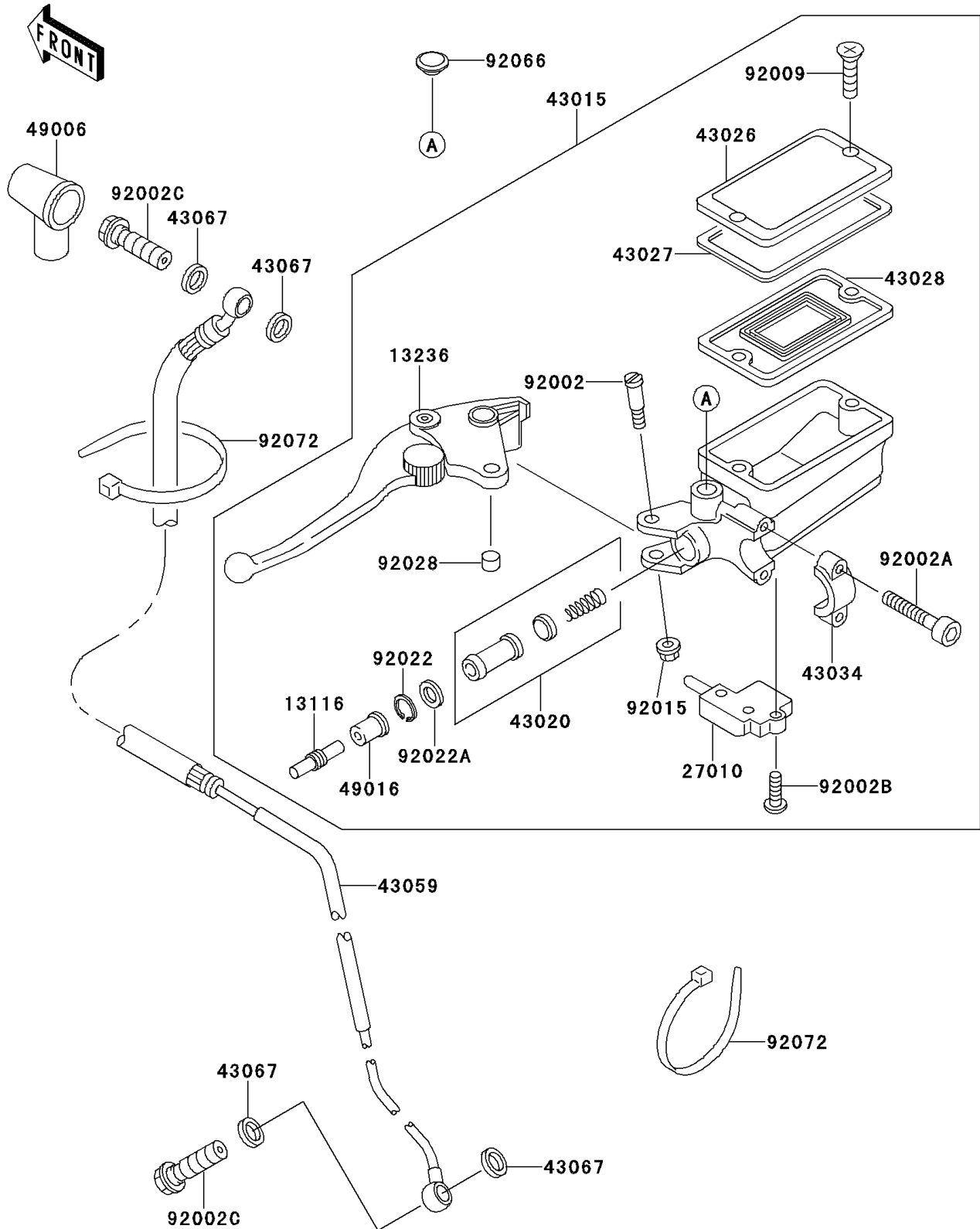


1995 GPZ 1100 PARTS DIAGRAM

Clutch Master Cylinder

F2380



1995 GPZ 1100 PARTS LIST

Clutch Master Cylinder

| ITEM NAME | PART NUMBER | QUANTITY |
|--|-------------|----------|
| ROD-PUSH,MASTER CYLINDER (Ref # 13116) | 13116-1110 | 1 |
| LEVER-COMP,CLUTCH (Ref # 13236) | 13236-1186 | 1 |
| SWITCH,CLUTCH (Ref # 27010) | 27010-1171 | 1 |
| CYLINDER-ASSY-MASTER,CLUTCH (Ref # 43015) | 43015-1499 | 1 |
| PISTON-COMP-BRAKE,CLUTCH (Ref # 43020) | 43020-1055 | 1 |
| CAP-BRAKE (Ref # 43026) | 43026-1076 | 1 |
| PLATE-DIAPHRAGM (Ref # 43027) | 43027-1055 | 1 |
| DIAPHRAGM,MASTER CYLINDER (Ref # 43028) | 43028-1058 | 1 |
| HOLDER-BRAKE,MASTER CYLINDER (Ref # 43034) | 43034-1054 | 1 |
| HOSE-BRAKE,CLUTCH (Ref # 43059) | 43059-1878 | 1 |
| WASHER,10.5X15X1.5 (Ref # 43067) | 43067-001 | 1 |
| BOOT,DUST (Ref # 49006) | 49006-1040 | 1 |
| COVER-SEAL,MASTER CYLINDER (Ref # 49016) | 49016-1044 | 1 |
| BOLT,LEVER SET,BLACK (Ref # 92002) | 92002-1322 | 1 |
| BOLT,SOCKET,6X20,BLACK (Ref # 92002A) | 92002-1324 | 1 |
| SCREW (Ref # 92002B) | 92002-1325 | 1 |
| BOLT,OIL,L=23 (Ref # 92002C) | 92002-1888 | 1 |
| SCREW,4MM (Ref # 92009) | 92009-1458 | 1 |
| NUT,FLANGED,6MM,BLACK (Ref # 92015) | 92015-1233 | 1 |
| WASHER,PISTON (Ref # 92022) | 92022-1605 | 1 |
| WASHER,PISTON (Ref # 92022A) | 92022-1606 | 1 |
| BUSHING,MASTER CYLINDER (Ref # 92028) | 92028-1310 | 1 |
| PLUG,9.5X8,POLYETHYLENE (Ref # 92066) | 92066-1077 | 1 |
| BAND,L=185 (Ref # 92072) | 92072-1195 | 1 |