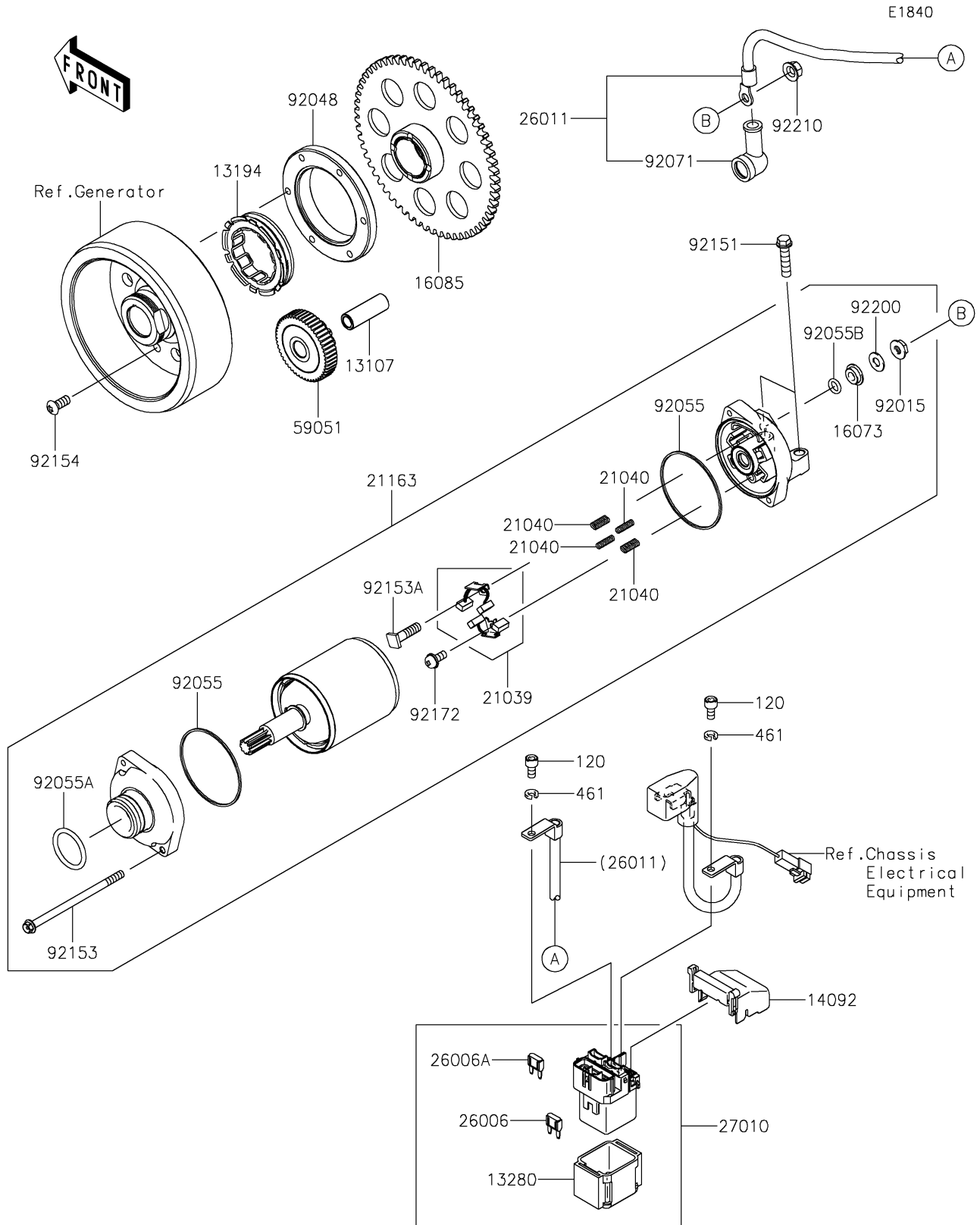


# 2023 Ninja® 1000SX PARTS DIAGRAM

## Starter Motor



## 2023 Ninja® 1000SX PARTS LIST

### Starter Motor

| ITEM NAME                                | PART NUMBER | QUANTITY |
|--|-------------|----------|
| SHAFT,IDLER GEAR (Ref # 13107)           | 13107-1377  | 1        |
| CLUTCH-ONEWAY (Ref # 13194)              | 13194-1096  | 1        |
| HOLDER,MAGNETIC SWITCH (Ref # 13280)     | 13280-0814  | 1        |
| COVER (Ref # 14092)                      | 14092-0109  | 1        |
| INSULATOR (Ref # 16073)                  | 16073-0053  | 1        |
| GEAR,CLUTCH ONEWAY (Ref # 16085)         | 16085-0609  | 1        |
| BRUSH,CARBON (Ref # 21039)               | 21039-0004  | 1        |
| SPRING-BRUSH (Ref # 21040)               | 21040-0003  | 4        |
| STARTER-ELECTRIC (Ref # 21163)           | 21163-0748  | 1        |
| FUSE,MINI BLADE,15A,BLUE (Ref # 26006)   | 26006-0001  | 1        |
| FUSE,MINI BLADE,30A,GREEN (Ref # 26006A) | 26006-1080  | 1        |
| WIRE-LEAD (Ref # 26011)                  | 26011-0951  | 1        |
| SWITCH (Ref # 27010)                     | 27010-0770  | 1        |
| GEAR-SPUR,IDLER (Ref # 59051)            | 59051-0762  | 1        |
| NUT,STARTER MOTOR (Ref # 92015)          | 92015-1476  | 1        |
| RACE (Ref # 92048)                       | 92048-0018  | 1        |
| RING-O (Ref # 92055)                     | 92055-0136  | 2        |
| RING-O (Ref # 92055A)                    | 92055-1276  | 1        |
| RING-O,4.5X2.0 (Ref # 92055B)            | 92055-1370  | 1        |
| GROMMET (Ref # 92071)                    | 92071-0024  | 1        |
| BOLT,FLANGED-SMALL,6X25 (Ref # 92151)    | 92151-1930  | 2        |
| BOLT (Ref # 92153)                       | 92153-1850  | 2        |
| BOLT (Ref # 92153A)                      | 92153-1866  | 1        |
| BOLT,TORX,6X14 (Ref # 92154)             | 92154-2448  | 6        |
| SCREW (Ref # 92172)                      | 92172-0334  | 1        |
| WASHER (Ref # 92200)                     | 92200-0386  | 1        |
| NUT,6MM (Ref # 92210)                    | 92210-0188  | 1        |
| BOLT-SOCKET,5X10 (Ref # 120)             | 120CB0510   | 2        |
| WASHER-SPRING,5MM (Ref # 461)            | 461DB0500   | 2        |