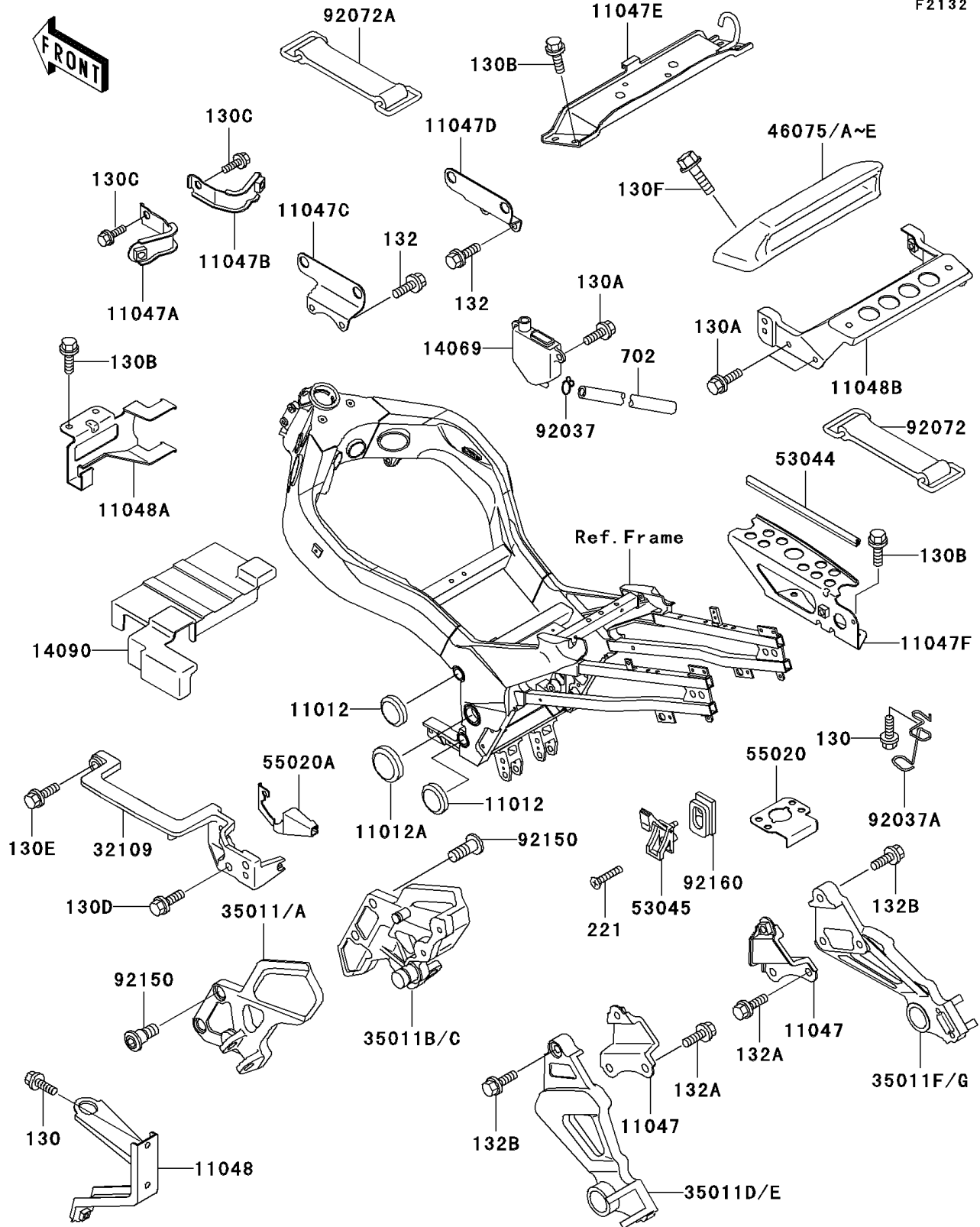


1997 Ninja® ZX™-11 PARTS DIAGRAM

Battery Case

F2132



1997 Ninja® ZX™ -11 PARTS LIST

Battery Case

ITEM NAME	PART NUMBER	QUANTITY
CAP (Ref # 11012)	11012-1460	4
CAP (Ref # 11012A)	11012-1657	2
BRACKET,REAR STAY (Ref # 11047)	11047-1878	2
BRACKET,RADIATOR,UPP,LH (Ref # 11047A)	11047-1931	1
BRACKET,RADIATOR,UPP,RH (Ref # 11047B)	11047-1932	1
BRACKET,IGNITION COIL,LH (Ref # 11047C)	11047-1933	1
BRACKET,IGNITION COIL,RH (Ref # 11047D)	11047-1934	1
BRACKET,SEAT LOCK (Ref # 11047E)	11047-1961	1
BRACKET,HELMET LOCK (Ref # 11047F)	11047-1962	1
BRACKET,OIL COOLER&RADIATOR (Ref # 11048)	11048-1169	1
BRACKET,FUEL PUMP (Ref # 11048A)	11048-1180	1
BRACKET,TAIL GRIP (Ref # 11048B)	11048-1325	1
BREATHER (Ref # 14069)	14069-1054	1
COVER,BATTERY (Ref # 14090)	14090-1305	1
GRIP-FRAME (Ref # 32109)	32109-1233	1
BOLT-FLANGED (Ref # 130)	130J0610	3
BOLT-FLANGED,6X14,BLACK (Ref # 130A)	130J0614	6
BOLT-FLANGED,6X16,BLACK (Ref # 130B)	130J0616	8
BOLT-FLANGED (Ref # 130C)	130J0812	2
BOLT-FLANGED,8X20 (Ref # 130D)	130J0820	1
BOLT-FLANGED,8X25,BLACK (Ref # 130E)	130J0825	1
BOLT-FLANGED,8X35,BLACK (Ref # 130F)	130J0835	2
BOLT-FLANGED-SMALL,6X10 (Ref # 132)	132J0610	4
BOLT-FLANGED-SMALL,8X12 (Ref # 132A)	132J0812	4
BOLT-FLANGED-SMALL (Ref # 132B)	132J0825	2
SCREW-CSK-CROS,6X20 (Ref # 221)	221E0620	4
TUBE-RUBBER,7X10X380 (Ref # 702)	702A07380	1
TRIM,L=165 (Ref # 53044)	53044-1270	1
HOOK-ASSY,ROPE (Ref # 53045)	53045-1057	4

1997 Ninja® ZX™ -11 PARTS LIST

Battery Case

ITEM NAME	PART NUMBER	QUANTITY
GUARD,SEAT STRIKER (Ref # 55020)	55020-1498	1
GUARD,SEAT LOCK (Ref # 55020A)	55020-1499	1
CLAMP,TUBE (Ref # 92037)	92037-147	1
CLAMP,HOSE (Ref # 92037A)	92037-1875	1
BAND,L=100 (Ref # 92072)	92072-071	1
BAND,BATTERY (Ref # 92072A)	92072-1188	1
BOLT,SOCKET,8X20 (Ref # 92150)	92150-1839	4
DAMPER,ROPE HOOK (Ref # 92160)	92160-1042	4
STAY,FR,LH,G.GRAY (Ref # 35011)	35011-1635-GD	1
STAY,FR,LH,SILVER NO.35 (Ref # 35011A)	35011-1635-VZ	1
STAY,FR,RH,G.GRAY (Ref # 35011B)	35011-1636-GD	1
STAY,FR,RH,SILVER NO.35 (Ref # 35011C)	35011-1636-VZ	1
STAY,RR,LH,G.GRAY (Ref # 35011D)	35011-1640-GD	1
STAY,RR,LH,SILVER NO.35 (Ref # 35011E)	35011-1640-VZ	1
STAY,RR,RH,G.GRAY (Ref # 35011F)	35011-1641-GD	1
STAY,RR,RH,SILVER NO.35 (Ref # 35011G)	35011-1641-VZ	1
GRIP,TAIL,L.W.GREEN (Ref # 46075)	46075-1104-DS	1
GRIP,TAIL,RED MICA (Ref # 46075C)	46075-1104-1Q	1
GRIP,TAIL,A.RED MICA (Ref # 46075D)	46075-1104-2D	1
GRIP,TAIL,L.W.GREEN (Ref # 46075E)	46075-1104-24	1