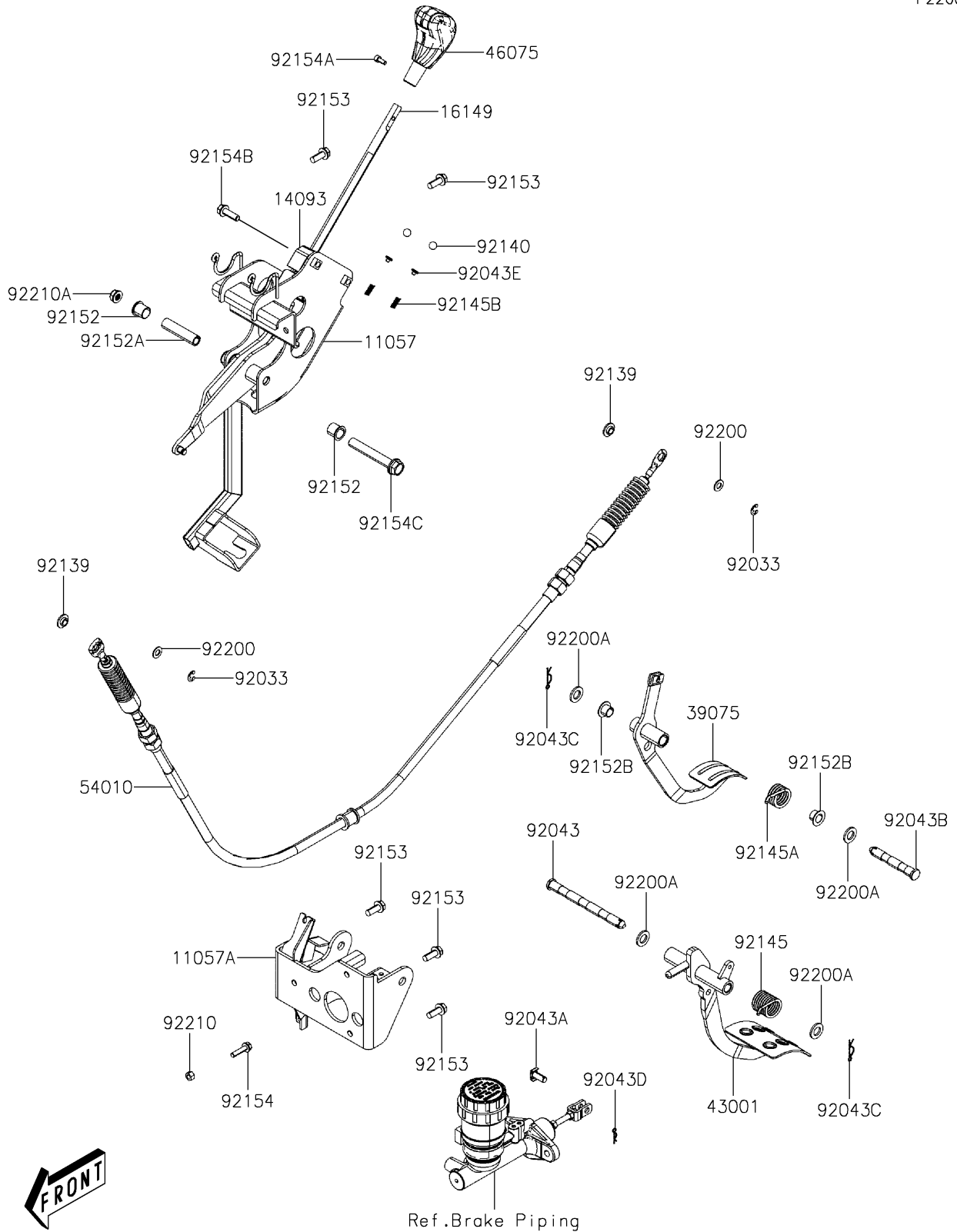


# 2023 MULE PRO-MX™ EPS PARTS DIAGRAM

## Brake Pedal/Throttle Lever

F2260



## 2023 MULE PRO-MX™ EPS PARTS LIST

### Brake Pedal/Throttle Lever

ITEM NAME	PART NUMBER	QUANTITY
BRACKET,SHIFT (Ref # 11057)	11057-Y003	1
BRACKET,BRAKE PEDAL (Ref # 11057A)	11057-Y008	1
COVER,SHIFT LEVER GUIDE (Ref # 14093)	14093-Y007	1
BAR,SHIFT (Ref # 16149)	16149-Y001	1
LEVER-THROTTLE (Ref # 39075)	39075-Y001	1
LEVER-BRAKE,PEDAL (Ref # 43001)	43001-Y002	1
GRIP (Ref # 46075)	46075-0569	1
CABLE,SHIFT (Ref # 54010)	54010-Y002	1
RING-SNAP (Ref # 92033)	92033-Y041	2
PIN (Ref # 92043)	92043-Y039	1
PIN (Ref # 92043A)	92043-Y040	1
PIN (Ref # 92043B)	92043-Y041	1
PIN,LOCK,14MM (Ref # 92043C)	92043-Y044	2
PIN,LOCK,8MM (Ref # 92043D)	92043-Y045	1
PIN (Ref # 92043E)	92043-Y047	2
BUSHING,SHIFT (Ref # 92139)	92139-Y013	2
BALL,STEEL 12 (Ref # 92140)	92140-Y001	2
SPRING,BRAKE PEDAL RETURN (Ref # 92145)	92145-Y064	1
SPRING,THROTTLE PEDAL RETURN (Ref # 92145A)	92145-Y065	1
SPRING,SHIFT (Ref # 92145B)	92145-Y073	2
COLLAR,SHIFT PIVOT (Ref # 92152)	92152-Y062	2
COLLAR,SHIFT PIVOT (Ref # 92152A)	92152-Y063	1
COLLAR (Ref # 92152B)	92152-Y065	2
BOLT,FLANGE,8X20 (Ref # 92153)	92153-Y033	5
BOLT,FLANGE,6X25 (Ref # 92154)	92154-Y130	1
BOLT,SOCKET,5X12 (Ref # 92154A)	92154-Y176	1
BOLT,FLANGE,8X25 (Ref # 92154B)	92154-Y195	2
BOLT,FLANGE,12X80 (Ref # 92154C)	92154-Y200	1
WASHER,8MM (Ref # 92200)	92200-Y044	2

## 2023 MULE PRO-MX™ EPS PARTS LIST

### Brake Pedal/Throttle Lever

ITEM NAME	PART NUMBER	QUANTITY
WASHER,12MM (Ref # 92200A)	92200-Y091	4
NUT,HEX,6MM (Ref # 92210)	92210-Y074	1
NUT,FLANGE,12MM (Ref # 92210A)	92210-Y090	1