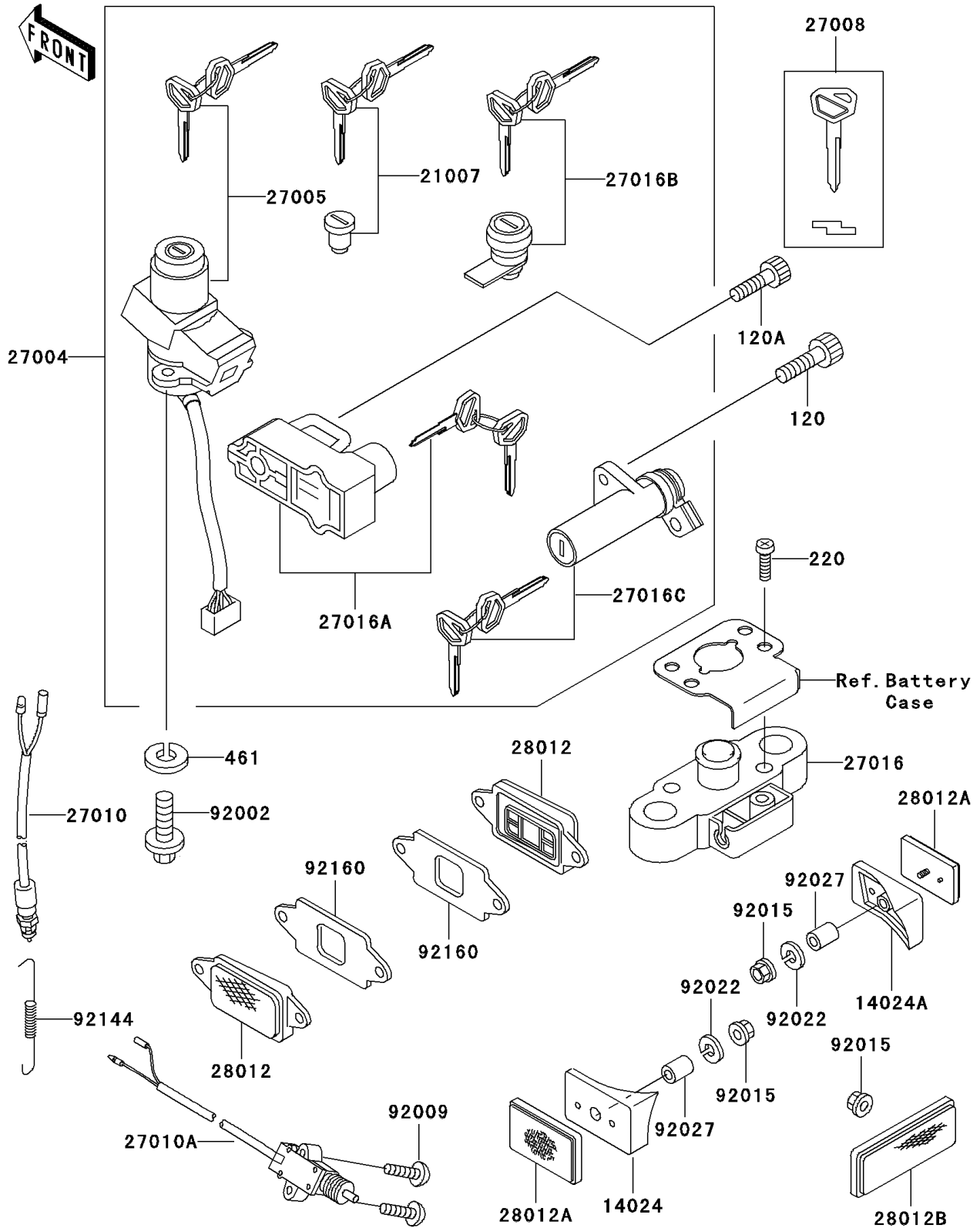


## 1993 Ninja® ZX™-11 PARTS DIAGRAM

Ignition Switch/Locks/Reflectors

F2770



## 1993 Ninja® ZX™-11 PARTS LIST

Ignition Switch/Locks/Reflectors

| ITEM NAME                              | PART NUMBER | QUANTITY |
|--|-------------|----------|
| BOLT-SOCKET (Ref # 120)                | 120S0512    | 1        |
| BOLT-SOCKET,6X16,BLACK (Ref # 120A)    | 120S0616    | 1        |
| SCREW-PAN-CROS,6X30,BLACK (Ref # 220)  | 220C0630    | 1        |
| WASHER-SPRING (Ref # 461)              | 461L0600    | 1        |
| COVER,REFLECTOR,LH (Ref # 14024)       | 14024-1940  | 1        |
| COVER,REFLECTOR,RH (Ref # 14024A)      | 14024-1941  | 1        |
| ROTOR,LOCK,TANK CAP (Ref # 21007)      | 21007-5037  | 1        |
| SWITCH-ASSY (Ref # 27004)              | 27004-5452  | 1        |
| SWITCH-ASSY-IGNITION (Ref # 27005)     | 27005-5101  | 1        |
| KEY-LOCK,BLANK (Ref # 27008)           | 27008-1173  | 1        |
| SWITCH,BRAKE LAMP (Ref # 27010)        | 27010-1093  | 1        |
| SWITCH,SIDE STAND (Ref # 27010A)       | 27010-1226  | 1        |
| LOCK-ASSY,SEAT STRIKER (Ref # 27016)   | 27016-1098  | 1        |
| LOCK-ASSY,HELMET (Ref # 27016A)        | 27016-5203  | 1        |
| LOCK-ASSY,TOOL BOX (Ref # 27016B)      | 27016-5204  | 1        |
| LOCK-ASSY,SEAT (Ref # 27016C)          | 27016-5205  | 1        |
| REFLECTOR-REFLEX,FR,SIDE (Ref # 28012) | 28012-1068  | 1        |
| REFLECTOR-REFLEX,RR (Ref # 28012A)     | 28012-1072  | 1        |
| REFLECTOR-REFLEX (Ref # 28012B)        | 28012-1077  | 1        |
| BOLT,TORX,6X16 (Ref # 92002)           | 92002-1333  | 1        |
| SCREW,5X20 (Ref # 92009)               | 92009-1459  | 1        |
| NUT,FLANGED,5MM (Ref # 92015)          | 92015-1259  | 1        |
| WASHER,5.2X16X1.2 (Ref # 92022)        | 92022-263   | 1        |
| COLLAR,5X8X14.5 (Ref # 92027)          | 92027-1789  | 1        |
| SPRING,REAR BRAKE SWITCH (Ref # 92144) | 92144-1283  | 1        |
| DAMPER,REFLECTOR (Ref # 92160)         | 92160-1192  | 1        |