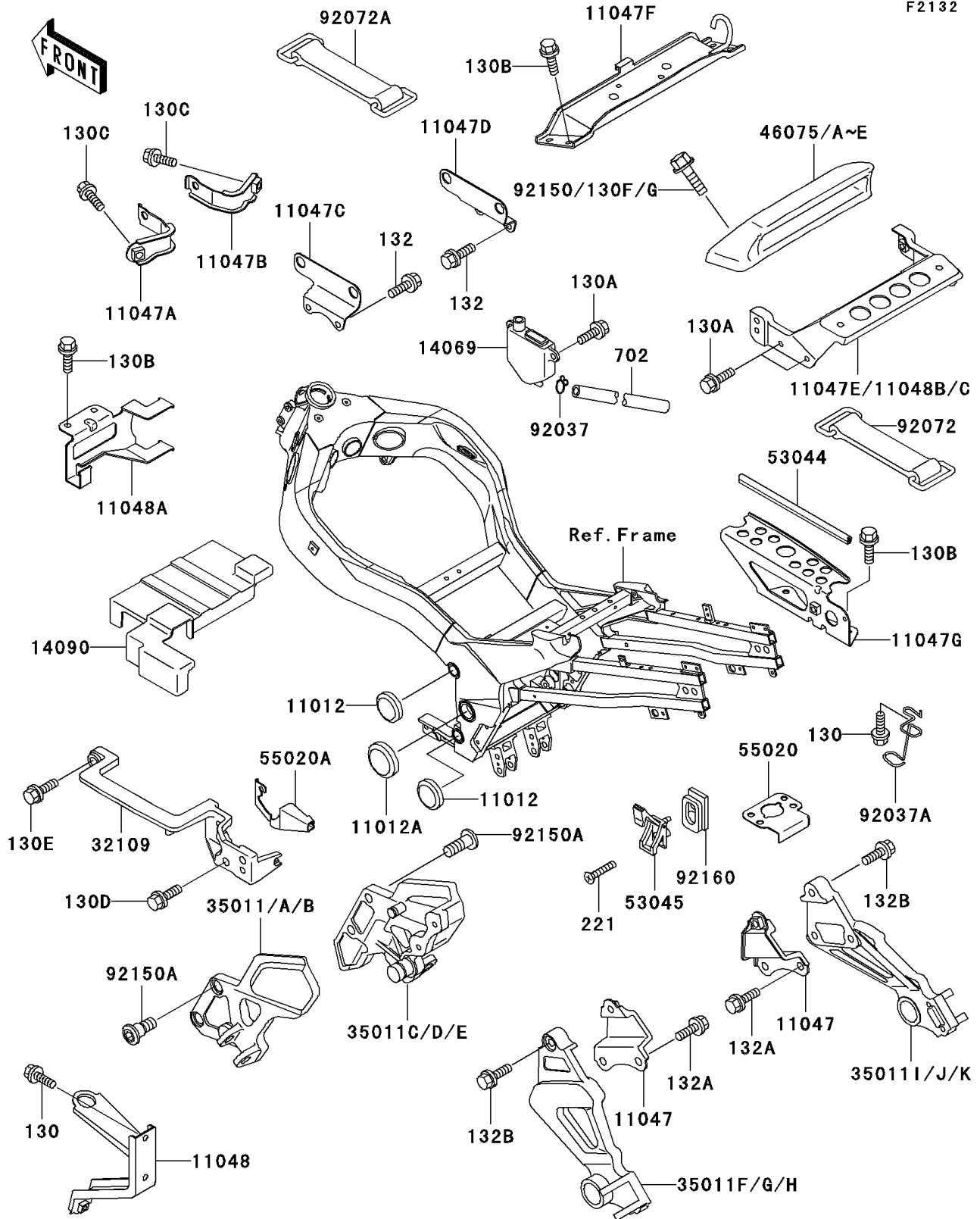


## 1993 Ninja® ZX™-11 PARTS DIAGRAM

Battery Case

F2132



## 1993 Ninja® ZX™-11 PARTS LIST

### Battery Case

ITEM NAME	PART NUMBER	QUANTITY
CAP (Ref # 11012)	11012-1460	1
CAP (Ref # 11012A)	11012-1657	1
BRACKET,REAR STAY (Ref # 11047)	11047-1878	1
BRACKET,RADIATOR,UPP,LH (Ref # 11047A)	11047-1931	1
BRACKET,RADIATOR,UPP,RH (Ref # 11047B)	11047-1932	1
BRACKET,IGNITION COIL,LH (Ref # 11047C)	11047-1933	1
BRACKET,IGNITION COIL,RH (Ref # 11047D)	11047-1934	1
BRACKET,TAIL GRIP (Ref # 11047E)	11047-1948	1
BRACKET,SEAT LOCK (Ref # 11047F)	11047-1961	1
BRACKET,HELMET LOCK (Ref # 11047G)	11047-1962	1
BRACKET,OIL COOLER&RADIATOR (Ref # 11048)	11048-1169	1
BRACKET,FUEL PUMP (Ref # 11048A)	11048-1180	1
BRACKET,TAIL GRIP (Ref # 11048C)	11048-1325	1
BREATHER (Ref # 14069)	14069-1054	1
COVER,BATTERY (Ref # 14090)	14090-1305	1
GRIP-FRAME (Ref # 32109)	32109-1233	1
BOLT-FLANGED (Ref # 130)	130J0610	1
BOLT-FLANGED,6X14,BLACK (Ref # 130A)	130J0614	1
BOLT-FLANGED,6X16,BLACK (Ref # 130B)	130J0616	1
BOLT-FLANGED (Ref # 130C)	130J0812	1
BOLT-FLANGED,8X20 (Ref # 130D)	130J0820	1
BOLT-FLANGED,8X25,BLACK (Ref # 130E)	130J0825	1
BOLT-FLANGED,8X35,BLACK (Ref # 130G)	130J0835	1
BOLT-FLANGED-SMALL,6X10 (Ref # 132)	132J0610	1
BOLT-FLANGED-SMALL,8X12 (Ref # 132A)	132J0812	1
BOLT-FLANGED-SMALL (Ref # 132B)	132J0825	1
SCREW-CSK-CROS,6X20 (Ref # 221)	221E0620	1
TRIM,L=165 (Ref # 53044)	53044-1270	1
HOOK-ASSY,ROPE (Ref # 53045)	53045-1057	1

## 1993 Ninja® ZX™-11 PARTS LIST

### Battery Case

ITEM NAME	PART NUMBER	QUANTITY
GUARD,SEAT STRIKER (Ref # 55020)	55020-1498	1
GUARD,SEAT LOCK (Ref # 55020A)	55020-1499	1
CLAMP,TUBE (Ref # 92037)	92037-147	1
CLAMP,HOSE (Ref # 92037A)	92037-1875	1
BAND,L=100 (Ref # 92072)	92072-071	1
BAND,BATTERY (Ref # 92072A)	92072-1188	1
BOLT,SOCKET,8X30 (Ref # 92150)	92150-1156	1
BOLT,SOCKET,8X20 (Ref # 92150A)	92150-1839	1
DAMPER,ROPE HOOK (Ref # 92160)	92160-1042	1
TUBE-RUBBER,7X10X380 (Ref # 702)	702A07380	1
STAY,FR,LH,SILVER NO.35 (Ref # 35011A)	35011-1635-TX	1
STAY,FR,LH,SILVER NO.35 (Ref # 35011B)	35011-1635-VZ	1
STAY,FR,RH,SILVER NO.35 (Ref # 35011D)	35011-1636-TX	1
STAY,FR,RH,SILVER NO.35 (Ref # 35011E)	35011-1636-VZ	1
STAY,RR,LH,SILVER NO.35 (Ref # 35011G)	35011-1640-TX	1
STAY,RR,LH,SILVER NO.35 (Ref # 35011H)	35011-1640-VZ	1
STAY,RR,RH,SILVER NO.35 (Ref # 35011J)	35011-1641-TX	1
STAY,RR,RH,SILVER NO.35 (Ref # 35011K)	35011-1641-VZ	1
GRIP,TAIL,M.VIOLET ROYAL (Ref # 46075)	46075-1104-JW	1
GRIP,TAIL,C.W.RED (Ref # 46075B)	46075-1104-TF	1