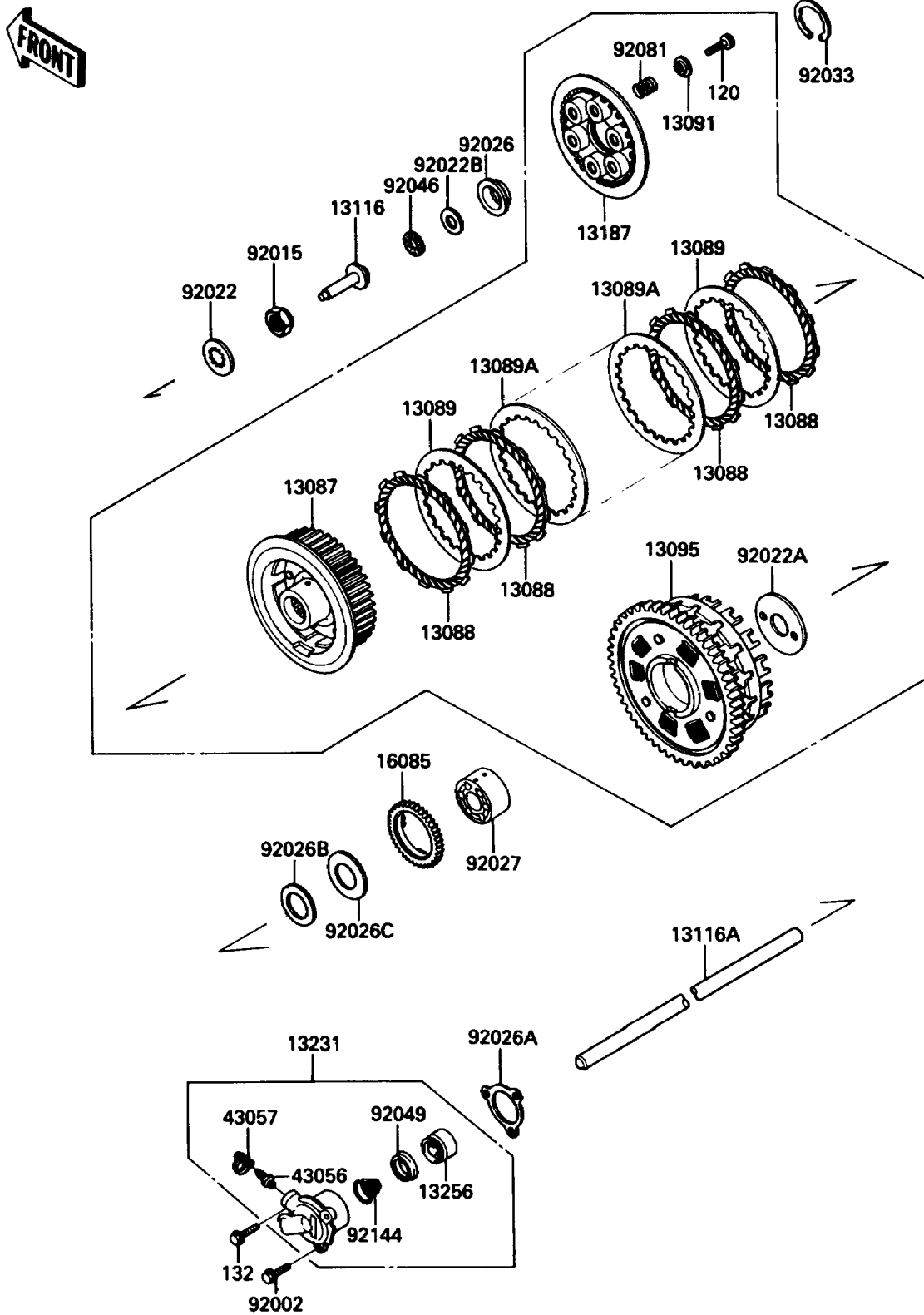


1988 NINJA® ZX-10 PARTS DIAGRAM

Clutch

E1350-0156



1988 NINJA® ZX-10 PARTS LIST

Clutch

ITEM NAME	PART NUMBER	QUANTITY
BOLT-SOCKET,6X16 (Ref # 120)	120Q0616	6
BOLT-FLANGED-SMALL (Ref # 132)	132J0680	1
HUB-CLUTCH (Ref # 13087)	13087-1106	1
PLATE-FRICTION (Ref # 13088)	13088-1051	9
PLATE-CLUTCH,T=2.6 (Ref # 13089)	13089-1067	2
PLATE-CLUTCH,T=2.9 (Ref # 13089A)	13089-1071	6
HOLDER,CLUTCH SPRING (Ref # 13091)	13091-1041	6
HOUSING-COMP-CLUTCH (Ref # 13095)	13095-1180	1
ROD-PUSH,CLUTCH (Ref # 13116)	13116-1102	1
ROD-PUSH,CLUTCH (Ref # 13116A)	13116-1118	1
PLATE-CLUTCH OPERATING (Ref # 13187)	13187-1056	1
RELEASE-ASSY-CLUTCH (Ref # 13231)	13231-1060	1
PISTON (Ref # 13256)	13256-1052	1
GEAR,OIL PUMP (Ref # 16085)	16085-1108	1
BREATHER-BRAKE (Ref # 43056)	43056-1052	1
CAP-BREATHER (Ref # 43057)	43057-1001	1
BOLT,6X25 (Ref # 92002)	92002-1344	2
NUT,20MM (Ref # 92015)	92015-1555	1
WASHER,TOOTHED,25X40X5 (Ref # 92022)	92022-1114	1
WASHER,CLUTCH THRUST (Ref # 92022A)	92022-1221	1
WASHER,15.1X29X1.0 (Ref # 92022B)	92022-1463	1
SPACER,CLUTCH (Ref # 92026)	92026-1202	1
SPACER,CLUTCH RELEASE (Ref # 92026A)	92026-1263	1
SPACER,25X45X2.0 (Ref # 92026B)	92026-1306	1
SPACER,25X62X2.0 (Ref # 92026C)	92026-1307	1
COLLAR (Ref # 92027)	92027-1710	1
RING-SNAP,50MM (Ref # 92033)	92033-1177	1
BEARING-NEEDLE,AXK1102 (Ref # 92046)	92046-1052	1
SEAL-OIL,PISTON (Ref # 92049)	92049-1165	1

1988 NINJA® ZX-10 PARTS LIST

Clutch

ITEM NAME	PART NUMBER	QUANTITY
SPRING,CLUTCH (Ref # 92081)	92081-1114	6
SPRING,CLUTCH RELEASE (Ref # 92144)	92144-1084	1