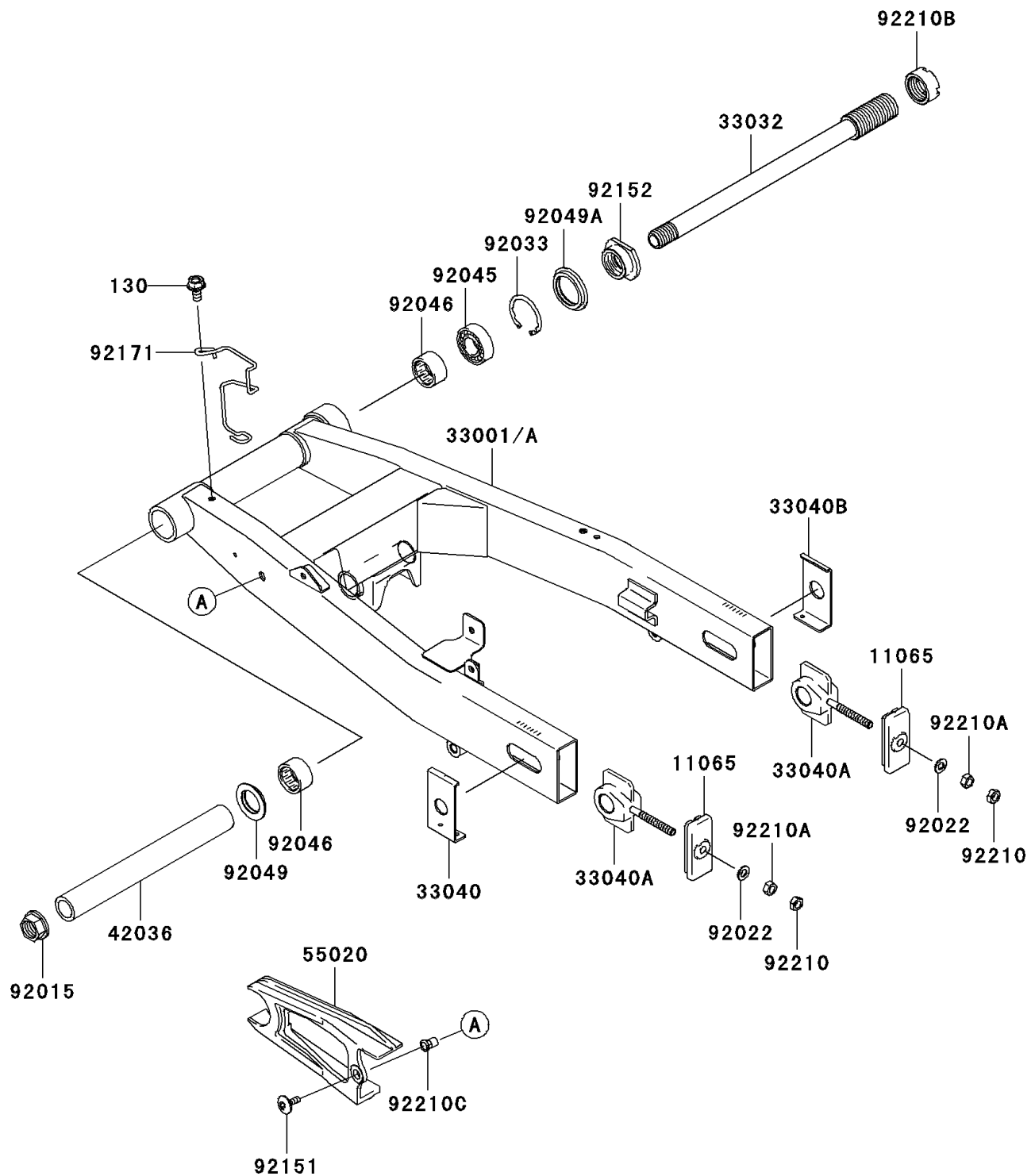


2010 Z750 (European)

PARTS DIAGRAM

Swingarm

F2141



2010 Z750 (European)

PARTS LIST

Swingarm

| ITEM NAME | PART NUMBER | QUANTITY |
|--|----------------|----------|
| BOLT-FLANGED,6X12 (Ref # 130) | 130BB0612 | 1 |
| CAP,CHAIN ADJUSTER (Ref # 11065) | 11065-0055 | 2 |
| ARM-COMP-SWING,BLACK (Ref # 33001A) | 33001-0103-18R | 1 |
| SHAFT-SWING ARM (Ref # 33032) | 33032-0005 | 1 |
| ADJUSTER-CHAIN,OUTER,LH (Ref # 33040) | 33040-0009 | 1 |
| ADJUSTER-CHAIN,INNER (Ref # 33040A) | 33040-0012 | 2 |
| ADJUSTER-CHAIN,OUTER,RH (Ref # 33040B) | 33040-1143 | 1 |
| SLEEVE,SWING ARM,L=237 (Ref # 42036) | 42036-1264 | 1 |
| GUARD,CHAIN (Ref # 55020) | 55020-0061 | 1 |
| NUT,FLANGED,20MM (Ref # 92015) | 92015-1724 | 1 |
| WASHER,8.5X16X1.2 (Ref # 92022) | 92022-1582 | 2 |
| RING-SNAP,42MM (Ref # 92033) | 92033-1041 | 1 |
| BEARING-BALL,6004UL11 (Ref # 92045) | 92045-0017 | 1 |
| BEARING-NEEDLE,7E-HVS 28X34X17 (Ref # 92046) | 92046-0008 | 2 |
| SEAL-OIL (Ref # 92049) | 92049-1181 | 1 |
| SEAL-OIL,MHA 35 42 5.7F (Ref # 92049A) | 92049-1380 | 1 |
| BOLT,SOCKET,6X18 (Ref # 92151) | 92151-1149 | 1 |
| COLLAR,SWING ARM PIVOT,RH (Ref # 92152) | 92152-0136 | 1 |
| CLAMP (Ref # 92171) | 92171-0141 | 1 |
| NUT,8MM (Ref # 92210) | 92210-0116 | 2 |
| NUT,8MM (Ref # 92210A) | 92210-0117 | 2 |
| NUT,28X1.0 (Ref # 92210B) | 92210-1347 | 1 |
| NUT,POP,6MM,L=15 (Ref # 92210C) | 92210-1397 | 1 |