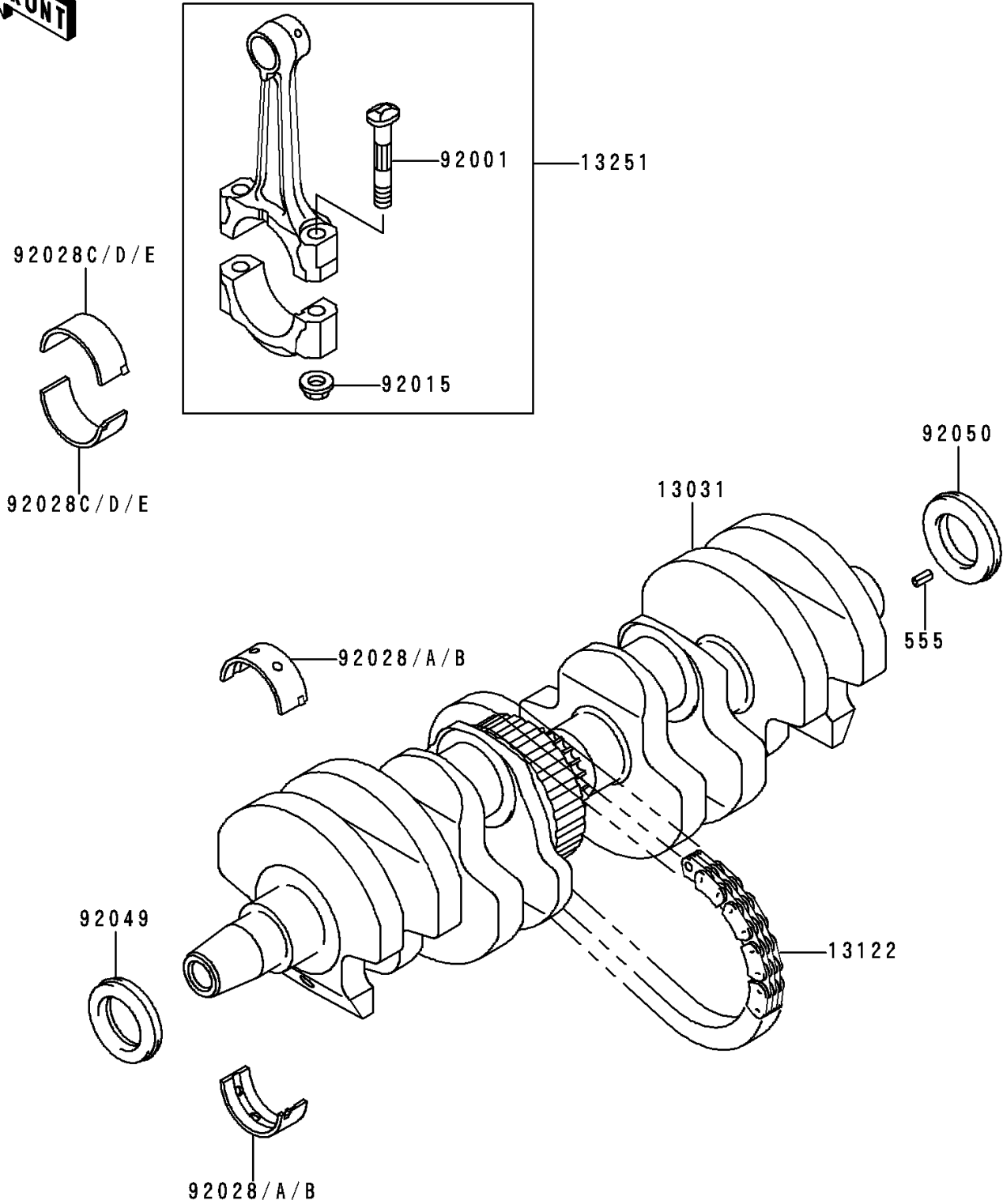


1991 Zephyr 750 PARTS DIAGRAM

Crankshaft

E1321



1991 Zephyr 750 PARTS LIST

Crankshaft

| ITEM NAME | PART NUMBER | QUANTITY |
|---|---------------|----------|
| PIN-SPRING,4X8 (Ref # 555) | 555A0408 | 1 |
| CRANKSHAFT-COMP (Ref # 13031) | 13031-1314 | 1 |
| CHAIN,63-139X52L(TUBAKIMOTO) (Ref # 13122) | 13122-007 | 1 |
| ROD-ASSY-CONNECTING,J (Ref # 13251) | 13251-1065-JJ | 4 |
| BOLT,CONNECTING ROD,8MM (Ref # 92001) | 92001-1887 | 8 |
| NUT,FLANGED,8MM (Ref # 92015) | 92015-1311 | 8 |
| BUSHING,CRANKSHAFT,BLUE (Ref # 92028) | 92028-1100 | 10 |
| BUSHING,CRANKSHAFT,BLACK (Ref # 92028A) | 92028-1101 | AR |
| BUSHING,CRANKSHAFT,BROWN (Ref # 92028B) | 92028-1102 | AR |
| BUSHING,CONNECTING ROD,BLUE (Ref # 92028C) | 92028-1203 | 8 |
| BUSHING,CONNECTING ROD,BLACK (Ref # 92028D) | 92028-1204 | AR |
| BUSHING,CONNECTING ROD,BROWN (Ref # 92028E) | 92028-1205 | AR |
| SEAL-OIL,HSCY25X39X7 (Ref # 92049) | 92049-1090 | 1 |
| SEAL-OIL,HSCY25397 (Ref # 92050) | 92050-081 | 1 |