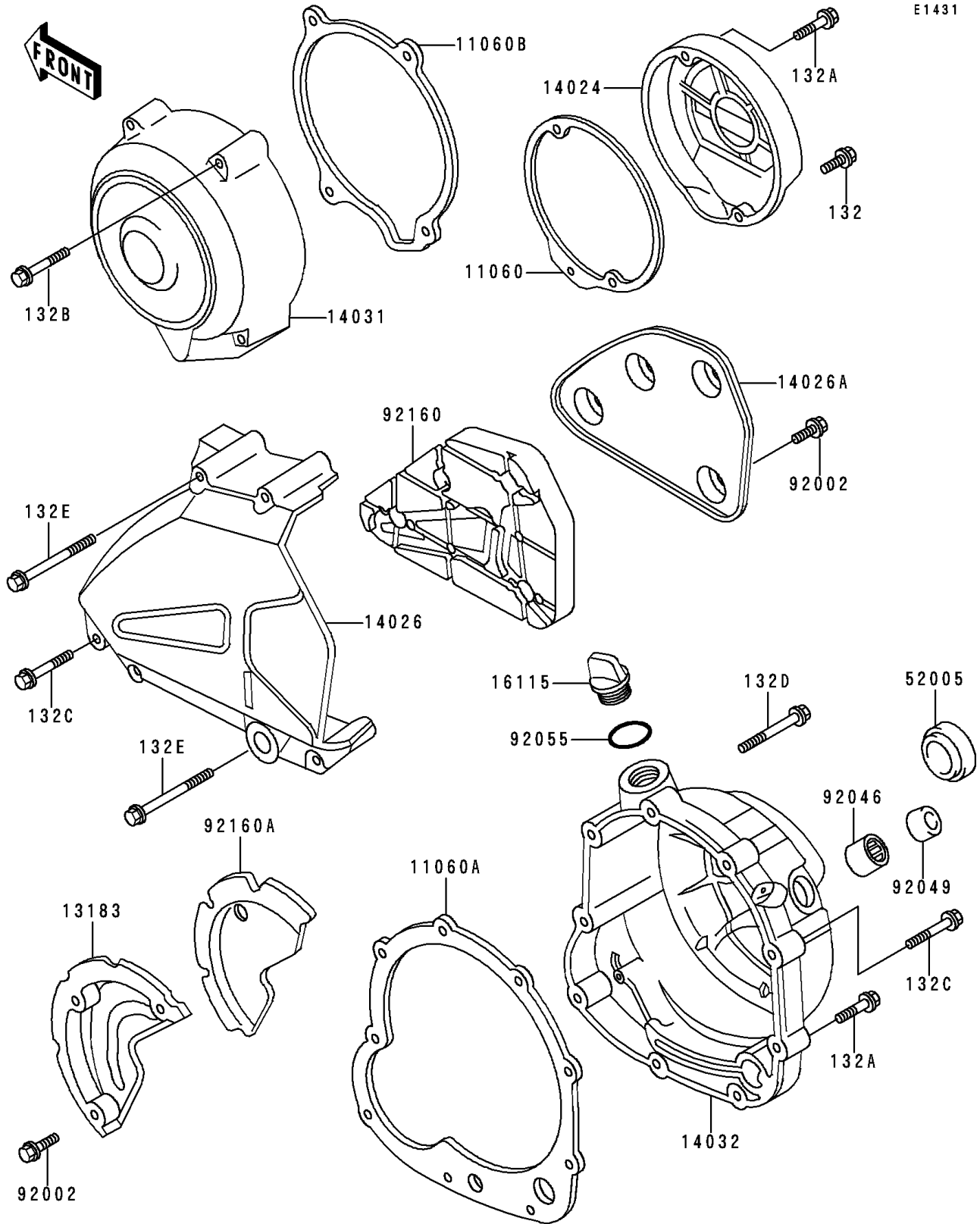


# 1991 Zephyr PARTS DIAGRAM

Engine Cover



# 1991 Zephyr PARTS LIST

## Engine Cover

ITEM NAME	PART NUMBER	QUANTITY
BOLT-FLANGED-SMALL (Ref # 132)	132E0620	1
BOLT-FLANGED-SMALL (Ref # 132A)	132E0630	5
BOLT-FLANGED-SMALL (Ref # 132B)	132E0640	4
BOLT-FLANGED-SMALL (Ref # 132C)	132E0645	4
BOLT-FLANGED-SMALL (Ref # 132D)	132E0660	2
BOLT-FLANGED-SMALL (Ref # 132E)	132E0670	3
GASKET,PULSING COIL CAP (Ref # 11060)	11060-1053	1
GASKET,CLUTCH COVER (Ref # 11060A)	11060-1054	1
GASKET,GENERATOR COVER (Ref # 11060B)	11060-1055	1
PLATE,CLUTCH SOUND ARRESTER (Ref # 13183)	13183-1476	1
COVER,PULSING (Ref # 14024)	14024-1819	1
COVER-CHAIN (Ref # 14026)	14026-1150	1
COVER-CHAIN,SOUND ARRESTER (Ref # 14026A)	14026-1151	1
COVER-GENERATOR (Ref # 14031)	14031-1240	1
COVER-CLUTCH (Ref # 14032)	14032-1280	1
CAP-OIL FILLER (Ref # 16115)	16115-013	1
GAUGE,OIL LEVEL (Ref # 52005)	52005-1009	1
BOLT,6X10 (Ref # 92002)	92002-1449	3
BOLT,6X10 (Ref # 92002)	92002-1449	7
BEARING-NEEDLE,HK1210 (Ref # 92046)	92046-1010	2
SEAL-OIL,TB12205.5 (Ref # 92049)	92049-1271	1
RING-O,31.5X2.6 (Ref # 92055)	92055-049	1
DAMPER,CHAIN SOUND ARRESTER (Ref # 92160)	92160-1143	1
DAMPER,CLUTCH SOUND ARRESTER (Ref # 92160A)	92160-1149	1