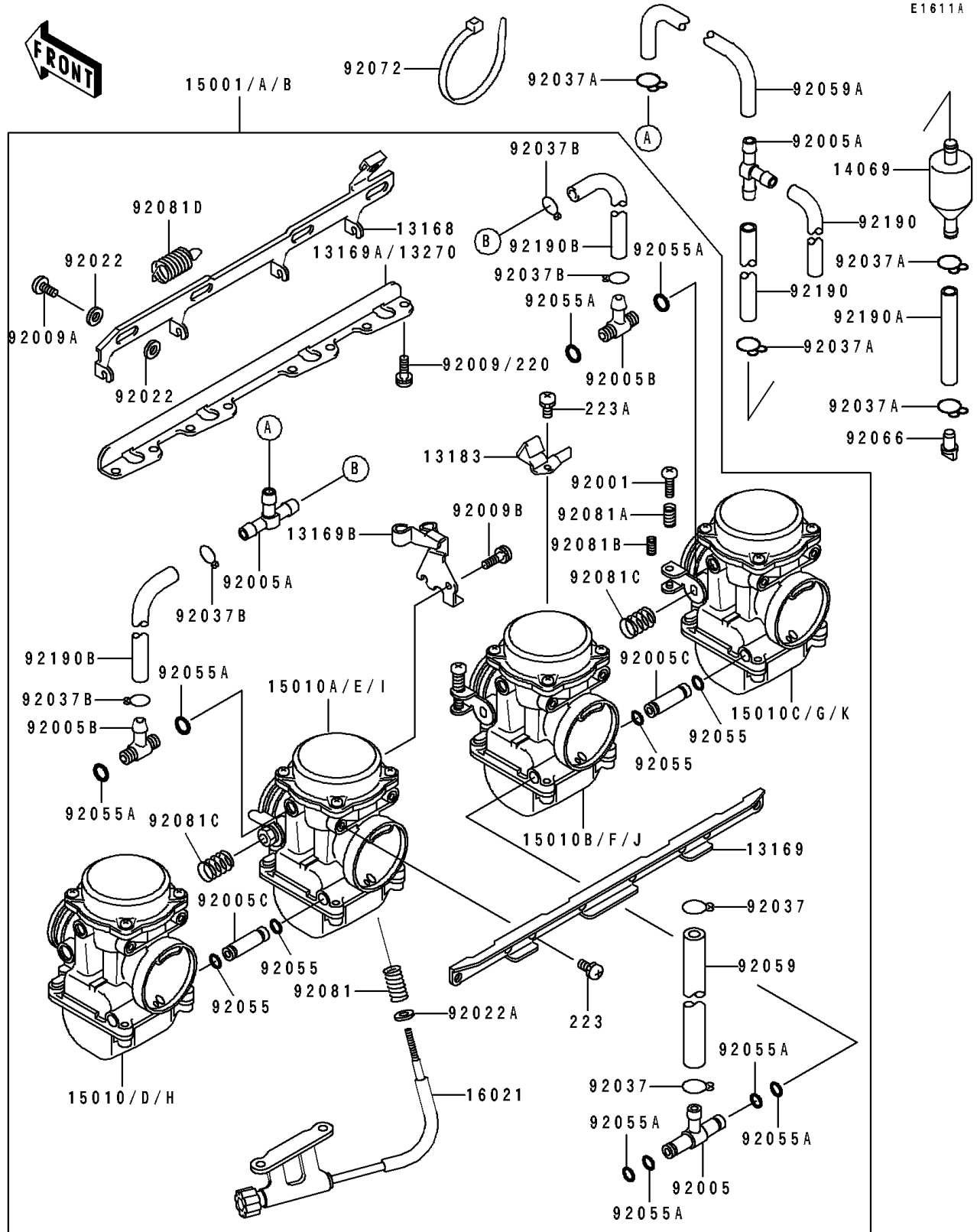


1994 ZR1100 Zephyr PARTS DIAGRAM

Carburetor(026548&NAMI.)



1994 ZR1100 Zephyr PARTS LIST

Carburetor(026548&NAMI.)

ITEM NAME	PART NUMBER	QUANTITY
LEVER,STARTER (Ref # 13168)	13168-1245	1
PLATE,CARBURETOR STAY,UPP (Ref # 13169)	13169-1869	1
PLATE,THROTTLE CABLE (Ref # 13169B)	13169-1962	1
PLATE,STARTER CABLE (Ref # 13183)	13183-1033	1
PLATE,CARBURETOR STAY,LWR (Ref # 13270)	13270-1070	1
BREATHER (Ref # 14069)	14069-1051	1
CARBURETOR-ASSY (Ref # 15001B)	15001-1903	1
CARBURETOR,LH,OUTSIDE (Ref # 15010H)	15010-1598	1
CARBURETOR,LH,INSIDE (Ref # 15010I)	15010-1599	1
CARBURETOR,RH,INSIDE (Ref # 15010J)	15010-1600	1
CARBURETOR,RH,OUTSIDE (Ref # 15010K)	15010-1601	1
SCREW-THROTTLE STOP (Ref # 16021)	16021-1101	1
BOLT,THROTTLE ADJUST (Ref # 92001)	92001-1998	3
FITTING,FUEL,T-TYPE (Ref # 92005)	92005-1108	1
FITTING,T-TYPE (Ref # 92005A)	92005-1119	2
FITTING,T-TYPE (Ref # 92005B)	92005-1125	2
FITTING (Ref # 92005C)	92005-1157	2
SCREW (Ref # 92009A)	92009-1262	3
SCREW,5X10 (Ref # 92009B)	92009-1365	1
WASHER,6.1X11X0.8,POLYACETAL (Ref # 92022)	92022-1199	6
WASHER,PLAIN,STOP SPRING (Ref # 92022A)	92022-1480	1
CLAMP,FUEL TUBE (Ref # 92037)	92037-1075	2
CLAMP,HOSE (Ref # 92037A)	92037-1104	4
CLAMP,TUBE (Ref # 92037B)	92037-1194	4
RING-O (Ref # 92055)	92055-1004	4
RING-O,FUEL FITTING (Ref # 92055A)	92055-1223	8
TUBE,7.3X12.5X260 (Ref # 92059)	92059-1492	1
TUBE,7X12X300 (Ref # 92059A)	92059-1585	1
PLUG,DRAIN (Ref # 92066)	92066-1211	1

1994 ZR1100 Zephyr PARTS LIST

Carburetor(026548&NAMI.)

ITEM NAME	PART NUMBER	QUANTITY
BAND,L=185 (Ref # 92072)	92072-1195	1
SPRING,THROTTLE STOP SCREW (Ref # 92081)	92081-1617	1
SPRING,THROTTLE ADJUST UPP (Ref # 92081A)	92081-1620	3
SPRING,THROTTLE ADJUST LWR (Ref # 92081B)	92081-1621	3
SPRING,THROTTLE ADJUST CNT (Ref # 92081C)	92081-1622	2
SPRING,STARTER LEVER (Ref # 92081D)	92081-1762	1
TUBE,7X12X160 (Ref # 92190)	92190-1201	2
TUBE,7X12X110 (Ref # 92190A)	92190-1242	1
TUBE,7X11X140 (Ref # 92190B)	92190-1417	2
SCREW-PAN-CROS,6X16 (Ref # 220)	220B0616	8
SCREW-PAN-WS-CROS (Ref # 223)	223C0510	8
SCREW-PAN-WS-CROS (Ref # 223A)	223D0410	1