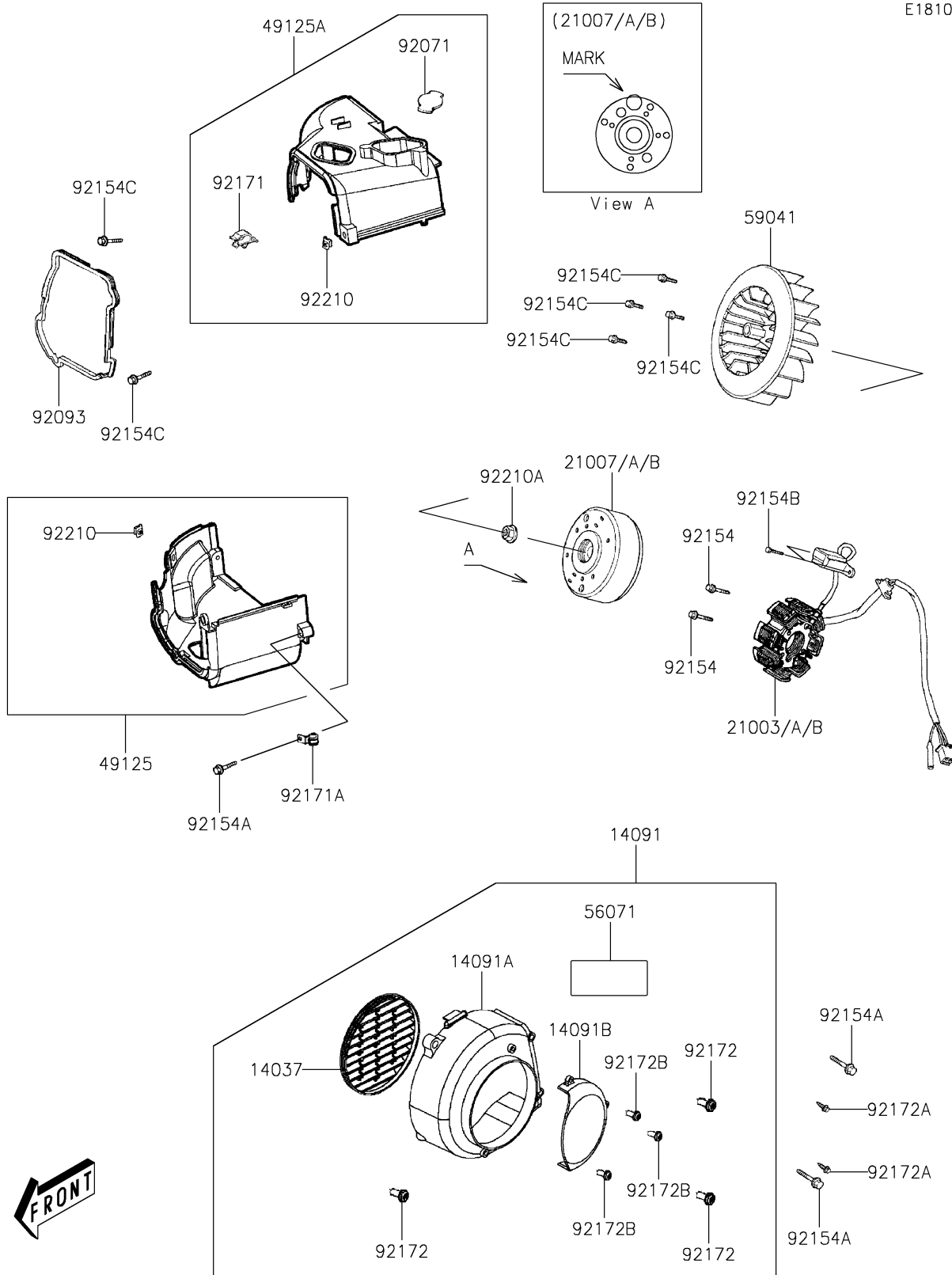


# 2024 KFX® 90 PARTS DIAGRAM

Generator

E1810



## 2024 KFX® 90 PARTS LIST

### Generator

| ITEM NAME                       | PART NUMBER | QUANTITY |
|---------------------------------|-------------|----------|
| SCREEN (Ref # 14037)            | 14037-Y002  | 1        |
| COVER,FAN (Ref # 14091)         | 14091-Y003  | 1        |
| COVER,FAN (Ref # 14091A)        | 14091-Y011  | 1        |
| COVER (Ref # 14091B)            | 14091-Y012  | 1        |
| STATOR,D402 (Ref # 21003)       | 21003-Y002  | 1        |
| STATOR,D406 (Ref # 21003A)      | 21003-Y005  | 1        |
| STATOR,D414 (Ref # 21003B)      | 21003-Y006  | 1        |
| ROTOR,D402 (Ref # 21007)        | 21007-Y001  | 1        |
| ROTOR,D406 (Ref # 21007A)       | 21007-Y005  | 1        |
| ROTOR,D414 (Ref # 21007B)       | 21007-Y006  | 1        |
| SHROUD,LWR (Ref # 49125)        | 49125-Y002  | 1        |
| SHROUD,UPP (Ref # 49125A)       | 49125-Y004  | 1        |
| LABEL-WARNING (Ref # 56071)     | 56071-Y002  | 1        |
| FAN (Ref # 59041)               | 59041-Y001  | 1        |
| GROMMET (Ref # 92071)           | 92071-Y001  | 1        |
| SEAL,SHROUD (Ref # 92093)       | 92093-Y004  | 1        |
| BOLT,6X20 (Ref # 92154)         | 92154-Y057  | 2        |
| BOLT,FLANGE,6X25 (Ref # 92154A) | 92154-Y066  | 3        |
| BOLT,HEX,5X12 (Ref # 92154B)    | 92154-Y111  | 2        |
| BOLT,FLANGE,6X16 (Ref # 92154C) | 92154-Y134  | 6        |
| CLAMP (Ref # 92171)             | 92171-Y001  | 1        |
| CLAMP (Ref # 92171A)            | 92171-Y002  | 1        |
| SCREW,4X12 (Ref # 92172)        | 92172-Y019  | 3        |
| SCREW,5X16 (Ref # 92172A)       | 92172-Y021  | 2        |
| SCREW,4X10 (Ref # 92172B)       | 92172-Y024  | 3        |
| NUT,6MM (Ref # 92210)           | 92210-Y011  | 2        |
| NUT,FLANGE,10MM (Ref # 92210A)  | 92210-Y058  | 1        |