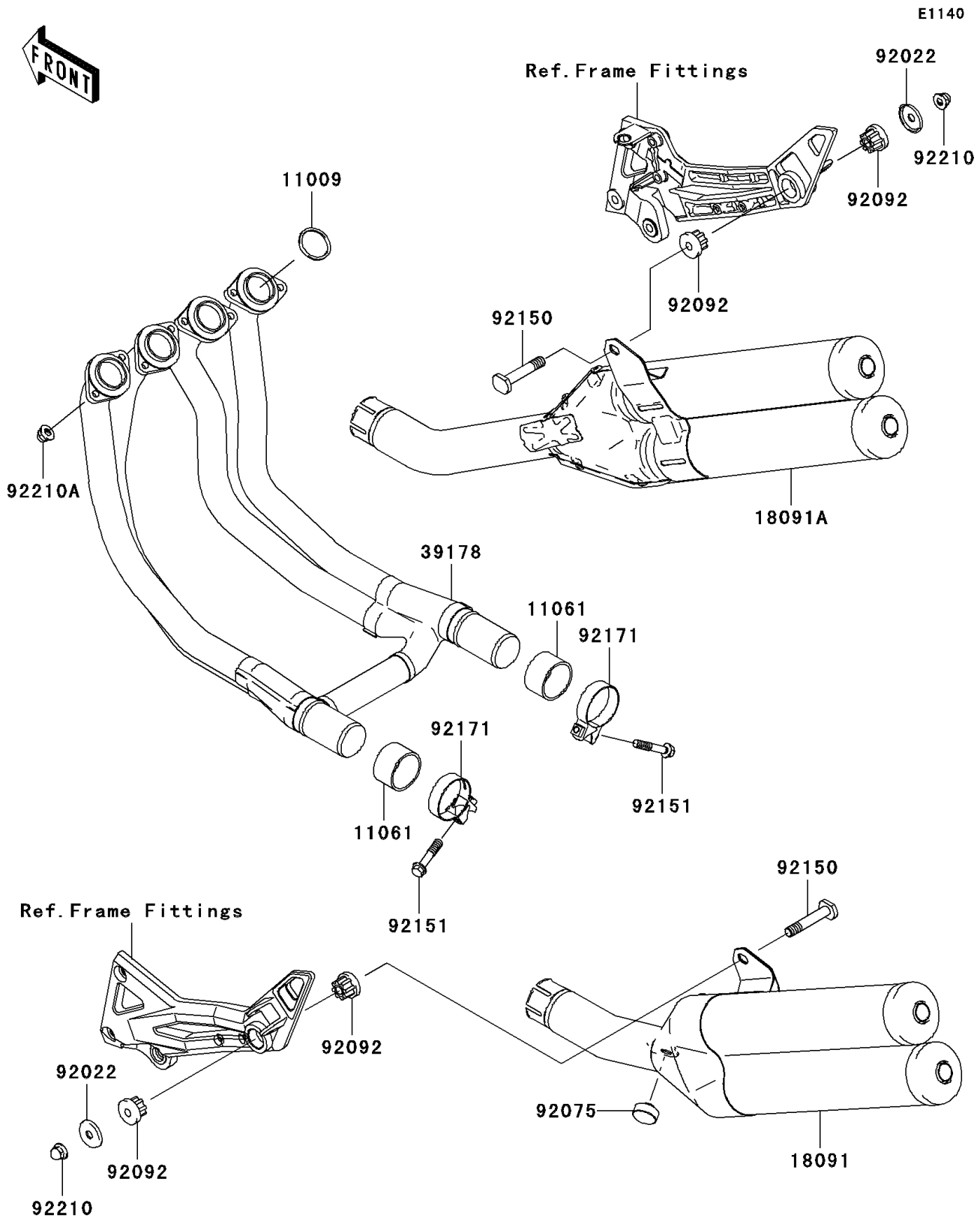


# 2003 Z1000 (European) PARTS DIAGRAM

Muffler(s)



## 2003 Z1000 (European) PARTS LIST

Muffler(s)

| ITEM NAME                                | PART NUMBER | QUANTITY |
|--|-------------|----------|
| GASKET,EXHAUST PIPE HOLDER (Ref # 11009) | 11009-1840  | 4        |
| GASKET,MUFFLER CONNECTING (Ref # 11061)  | 11061-0023  | 2        |
| BODY-COMP-MUFFLER,LH (Ref # 18091)       | 18091-0019  | 1        |
| BODY-COMP-MUFFLER,RH (Ref # 18091A)      | 18091-0020  | 1        |
| MANIFOLD-COMP-EXHAUST (Ref # 39178)      | 39178-0008  | 1        |
| WASHER (Ref # 92022)                     | 92022-289   | 2        |
| DAMPER (Ref # 92075)                     | 92075-1737  | 1        |
| BUSHING-RUBBER,MUFFLER (Ref # 92092)     | 92092-1087  | 4        |
| BOLT,10X55 (Ref # 92150)                 | 92150-1792  | 2        |
| BOLT,FLANGED,8X40 (Ref # 92151)          | 92151-1532  | 2        |
| CLAMP (Ref # 92171)                      | 92171-0043  | 2        |
| NUT,CAP,10MM (Ref # 92210)               | 92210-1121  | 2        |
| NUT,8MM (Ref # 92210A)                   | 92210-1328  | 8        |