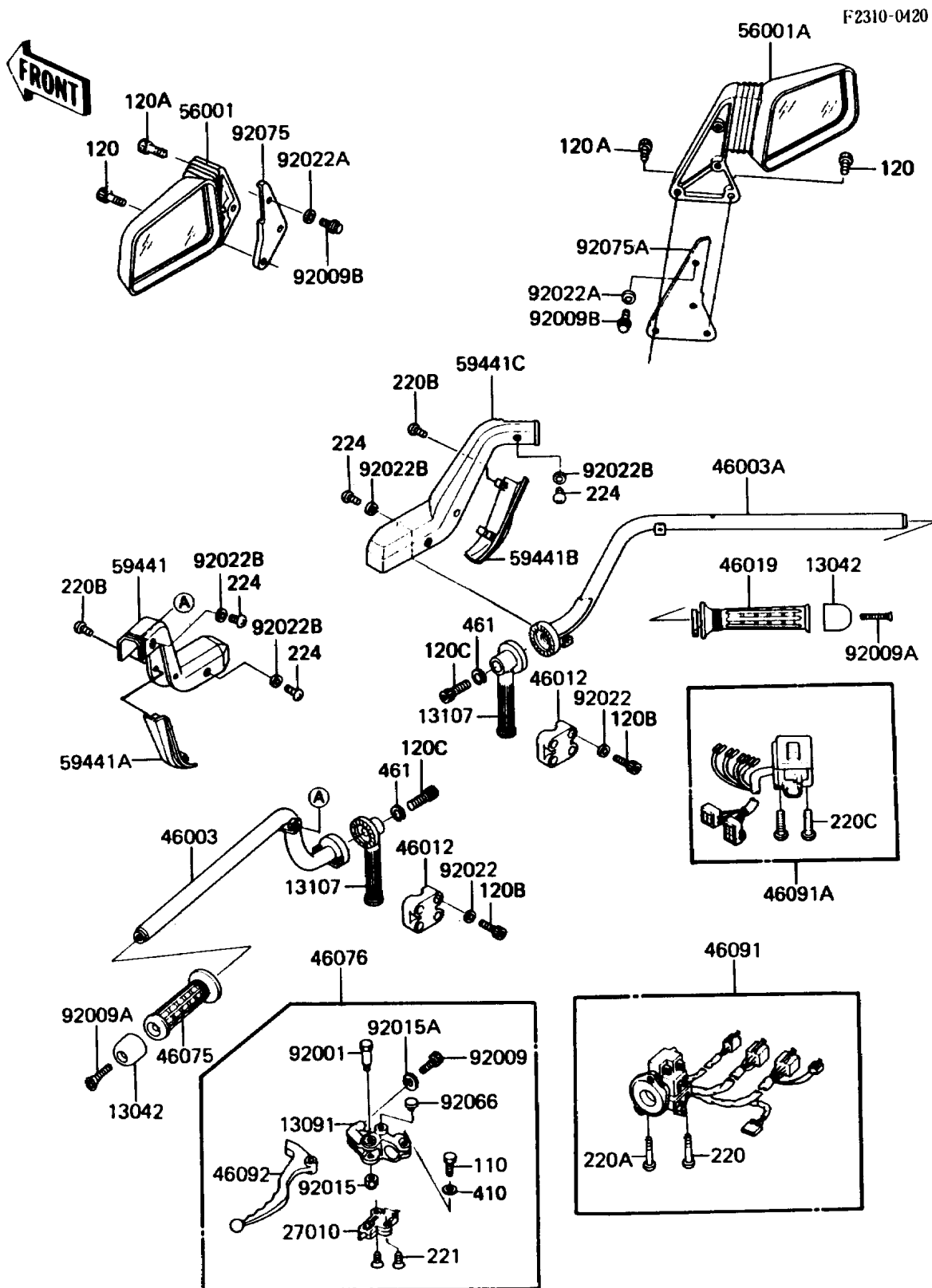


1987 Voyager PARTS DIAGRAM

Handlebar



1987 Voyager PARTS LIST

Handlebar

| ITEM NAME | PART NUMBER | QUANTITY |
|--|-------------|----------|
| WEIGHT,HANDLE (Ref # 13042) | 13042-1051 | 1 |
| HOLDER,CLUTCH LEVER (Ref # 13091) | 13091-1254 | 1 |
| SHAFT,HANDLE (Ref # 13107) | 13107-1040 | 1 |
| SWITCH,CLUTCH,BLACK (Ref # 27010) | 27010-1094 | 1 |
| HANDLE,LH (Ref # 46003) | 46003-1131 | 1 |
| HANDLE,RH (Ref # 46003A) | 46003-1264 | 1 |
| HOLDER-HANDLE (Ref # 46012) | 46012-1039 | 1 |
| GRIP-ASSY,THROTTLE (Ref # 46019) | 46019-1066 | 1 |
| GRIP,LH (Ref # 46075) | 46075-1036 | 1 |
| LEVER-ASSY-GRIP (Ref # 46076) | 46076-1042 | 1 |
| HOUSING-ASSY-CONTROL,LH (Ref # 46091) | 46091-1420 | 1 |
| HOUSING-ASSY-CONTROL,RH (Ref # 46091A) | 46091-1468 | 1 |
| LEVER-GRIP,CLUTCH (Ref # 46092) | 46092-1101 | 1 |
| MIRROR-ASSY,LH (Ref # 56001) | 56001-1138 | 1 |
| MIRROR-ASSY,RH (Ref # 56001A) | 56001-1139 | 1 |
| COVER-HANDLE,LH,UPP (Ref # 59441) | 59441-1013 | 1 |
| COVER-HANDLE,LH,LWR (Ref # 59441A) | 59441-1014 | 1 |
| COVER-HANDLE,RH,LWR (Ref # 59441B) | 59441-1017 | 1 |
| COVER-HANDLE,RH,UPP (Ref # 59441C) | 59441-1078 | 1 |
| BOLT,CLUTCH LEVER,BLACK (Ref # 92001) | 92001-1548 | 1 |
| SCREW,CABLE ADJUST,8MM,BLACK (Ref # 92009) | 92009-1134 | 1 |
| SCREW,8X45 (Ref # 92009A) | 92009-1257 | 1 |
| SCREW,6X14 (Ref # 92009B) | 92009-1288 | 1 |
| NUT,LOCK,6MM,BLACK (Ref # 92015) | 92015-1191 | 1 |
| NUT,CABLE ADJUST LOCK,BLACK (Ref # 92015A) | 92015-1197 | 1 |
| WASHER,9X15.5X2 (Ref # 92022) | 92022-1401 | 1 |
| WASHER,MIRROR ASSY (Ref # 92022A) | 92022-1505 | 1 |
| WASHER,3.3X8X0.5 (Ref # 92022B) | 92022-1516 | 1 |
| PLUG,9.5X8,POLYETHYLENE (Ref # 92066) | 92066-1077 | 1 |

1987 Voyager PARTS LIST

Handlebar

| ITEM NAME | PART NUMBER | QUANTITY |
|--|-------------|----------|
| DAMPER,MIRROR,LH (Ref # 92075) | 92075-1457 | 1 |
| DAMPER,MIRROR,RH (Ref # 92075A) | 92075-1458 | 1 |
| BOLT,6X22,BLACK (Ref # 110) | 110C0622 | 1 |
| BOLT-SOCKET,6X30,BLACK (Ref # 120) | 120S0630 | 1 |
| BOLT-SOCKET,6X35,BLACK (Ref # 120A) | 120S0635 | 1 |
| BOLT-SOCKET,8X30,BLACK (Ref # 120B) | 120S0830 | 1 |
| BOLT-SOCKET,12X35,BLACK (Ref # 120C) | 120S1235 | 1 |
| SCREW-PAN-CROS (Ref # 220) | 220B0535 | 1 |
| SCREW-PAN-CROS (Ref # 220A) | 220B0545 | 1 |
| SCREW-PAN-CROS (Ref # 220B) | 220C0308 | 1 |
| SCREW-PAN-CROS,5X50 (Ref # 220C) | 220C0550 | 1 |
| SCREW-CSK-CROS (Ref # 221) | 221C0316 | 1 |
| SCREW-PAN-WP-CROS (Ref # 224) | 224C0510 | 1 |
| WASHER-PLAIN-SMALL,6MM,BLACK (Ref # 410) | 410F0600 | 1 |
| WASHER-SPRING,12MM,BLACK (Ref # 461) | 461K1200 | 1 |