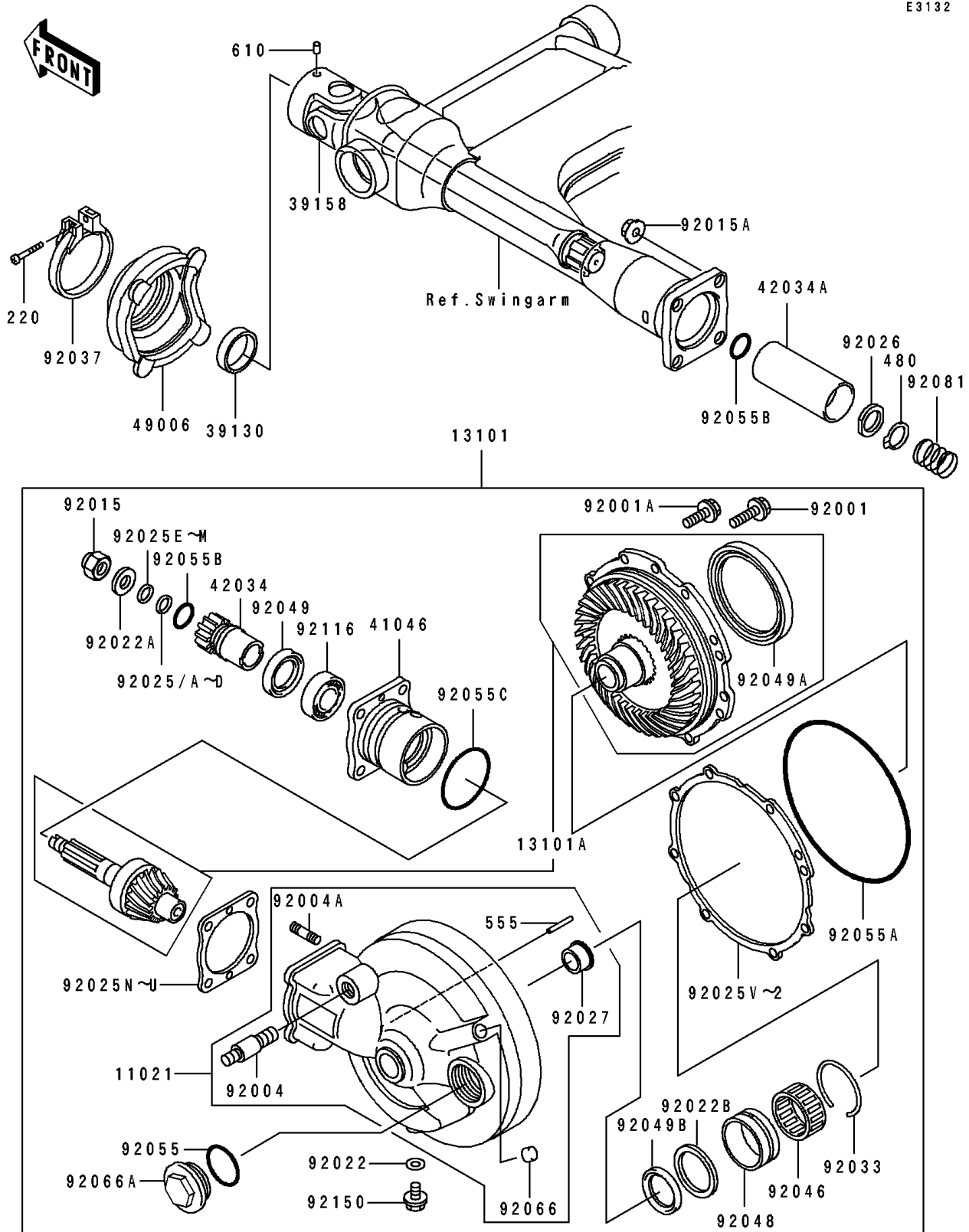


1997 Eliminator 600 PARTS DIAGRAM

Drive Shaft/Final Gear

E3132



1997 Eliminator 600 PARTS LIST

Drive Shaft/Final Gear

| ITEM NAME | PART NUMBER | QUANTITY |
|---|-------------|----------|
| CASE-ASSY,FINAL GEAR (Ref # 11021) | 11021-1105 | 1 |
| GEAR-ASSY,FINAL (Ref # 13101) | 13101-1214 | 1 |
| GEAR-ASSY,FINAL BEVEL (Ref # 13101A) | 13101-5035 | 1 |
| SPRING-LEAF (Ref # 39130) | 39130-1002 | 1 |
| SHAFT-ASSY-DRIVE (Ref # 39158) | 39158-1060 | 1 |
| HOUSING-BEARING,FINAL GEAR (Ref # 41046) | 41046-1097 | 1 |
| COUPLING,DRIVE SHAFT,INNER (Ref # 42034) | 42034-1030 | 1 |
| COUPLING,DRIVE SHAFT,OUTER (Ref # 42034A) | 42034-1031 | 1 |
| BOOT,PROPELLER SHAFT (Ref # 49006) | 49006-1059 | 1 |
| BOLT,FLANGED,8X28 (Ref # 92001) | 92001-1095 | 1 |
| BOLT,FLANGED,8X25 (Ref # 92001A) | 92001-1324 | 1 |
| STUD,RR SHOCKABSORBER (Ref # 92004) | 92004-1047 | 1 |
| STUD,8X30,BLACK (Ref # 92004A) | 92004-1126 | 1 |
| NUT,12MM (Ref # 92015) | 92015-1182 | 1 |
| NUT,8MM (Ref # 92015A) | 92015-1936 | 1 |
| WASHER,8.2X16X1 (Ref # 92022) | 92022-1086 | 1 |
| WASHER,12.3X25X3.2 (Ref # 92022A) | 92022-1293 | 1 |
| WASHER,39X49.5X1 (Ref # 92022B) | 92022-1294 | 1 |
| SHIM,12.5X17X1.30 (Ref # 92025) | 92025-1282 | 1 |
| SHIM,12.5X17X1.32 (Ref # 92025A) | 92025-1283 | 1 |
| SHIM,12.5X17X1.34 (Ref # 92025B) | 92025-1284 | 1 |
| SHIM,12.5X17X1.36 (Ref # 92025C) | 92025-1285 | 1 |
| SHIM,12.5X17X1.38 (Ref # 92025D) | 92025-1286 | 1 |
| SHIM,12.5X17X0.1 (Ref # 92025E) | 92025-1287 | 1 |
| SHIM,12.5X17X0.2 (Ref # 92025F) | 92025-1288 | 1 |
| SHIM,12.5X17X0.3 (Ref # 92025G) | 92025-1289 | 1 |
| SHIM,12.5X17X0.5 (Ref # 92025H) | 92025-1290 | 1 |
| SHIM,12.5X17X0.6 (Ref # 92025I) | 92025-1291 | 1 |
| SHIM,12.5X17X0.7 (Ref # 92025J) | 92025-1292 | 1 |

1997 Eliminator 600 PARTS LIST

Drive Shaft/Final Gear

| ITEM NAME | PART NUMBER | QUANTITY |
|--|-------------|----------|
| SHIM,12.5X17X0.8 (Ref # 92025K) | 92025-1293 | 1 |
| SHIM,12.5X17X0.9 (Ref # 92025L) | 92025-1294 | 1 |
| SHIM,12.5X17X1.0 (Ref # 92025M) | 92025-1295 | 1 |
| SHIM,T=0.15 (Ref # 92025N) | 92025-1312 | 1 |
| SHIM,T=0.5 (Ref # 92025O) | 92025-1313 | 1 |
| SHIM,T=0.6 (Ref # 92025P) | 92025-1314 | 1 |
| SHIM,T=0.7 (Ref # 92025Q) | 92025-1315 | 1 |
| SHIM,T=0.8 (Ref # 92025R) | 92025-1316 | 1 |
| SHIM,T=0.9 (Ref # 92025S) | 92025-1317 | 1 |
| SHIM,T=1.0 (Ref # 92025T) | 92025-1318 | 1 |
| SHIM,T=1.2 (Ref # 92025U) | 92025-1319 | 1 |
| SHIM,T=0.15 (Ref # 92025V) | 92025-1336 | 1 |
| SHIM,T=0.5 (Ref # 92025W) | 92025-1337 | 1 |
| SHIM,T=0.6 (Ref # 92025X) | 92025-1338 | 1 |
| SHIM,T=0.7 (Ref # 92025Y) | 92025-1339 | 1 |
| SHIM,T=0.8 (Ref # 92025Z) | 92025-1340 | 1 |
| SHIM,T=0.9 (Ref # 920250) | 92025-1341 | 1 |
| SHIM,T=1.0 (Ref # 920251) | 92025-1342 | 1 |
| SHIM,T=1.2 (Ref # 920252) | 92025-1343 | 1 |
| SPACER,DRIVE SHAFT (Ref # 92026) | 92026-1106 | 1 |
| COLLAR (Ref # 92027) | 92027-1412 | 1 |
| RING-SNAP,52MM (Ref # 92033) | 92033-1074 | 1 |
| CLAMP,BOOT FITTING (Ref # 92037) | 92037-1112 | 1 |
| BEARING-NEEDLE,KTV384620E01 C3 (Ref # 92046) | 92046-1057 | 1 |
| RACE,ORT465021E01 (Ref # 92048) | 92048-1019 | 1 |
| SEAL-OIL,SC28438 (Ref # 92049) | 92049-1084 | 1 |
| SEAL-OIL,SC759510 (Ref # 92049A) | 92049-1085 | 1 |
| SEAL-OIL,SC32435.5 (Ref # 92049B) | 92049-1155 | 1 |
| RING-O,36MM (Ref # 92055) | 92055-1005 | 1 |

1997 Eliminator 600 PARTS LIST

Drive Shaft/Final Gear

| ITEM NAME | PART NUMBER | QUANTITY |
|---------------------------------------|-------------|----------|
| RING-0,ID=150.4 (Ref # 92055A) | 92055-1039 | 1 |
| RING-0,27MM (Ref # 92055B) | 92055-1119 | 1 |
| RING-0,55MM (Ref # 92055C) | 92055-1120 | 1 |
| PLUG (Ref # 92066) | 92066-1110 | 1 |
| PLUG,OIL FILTER CAP (Ref # 92066A) | 92066-1402 | 1 |
| SPRING,DRIVE SHAFT (Ref # 92081) | 92081-1427 | 1 |
| BEARING-ROLLER,4T32004X (Ref # 92116) | 92116-1010 | 1 |
| BOLT,8X12 (Ref # 92150) | 92150-1780 | 1 |
| SCREW-PAN-CROS (Ref # 220) | 220B0430 | 1 |
| CIRCLIP-TYPE-C,20MM (Ref # 480) | 480J2000 | 1 |
| PIN-SPRING (Ref # 555) | 555A0428 | 1 |
| ROLLER,4X6 (Ref # 610) | 610A0406 | 1 |