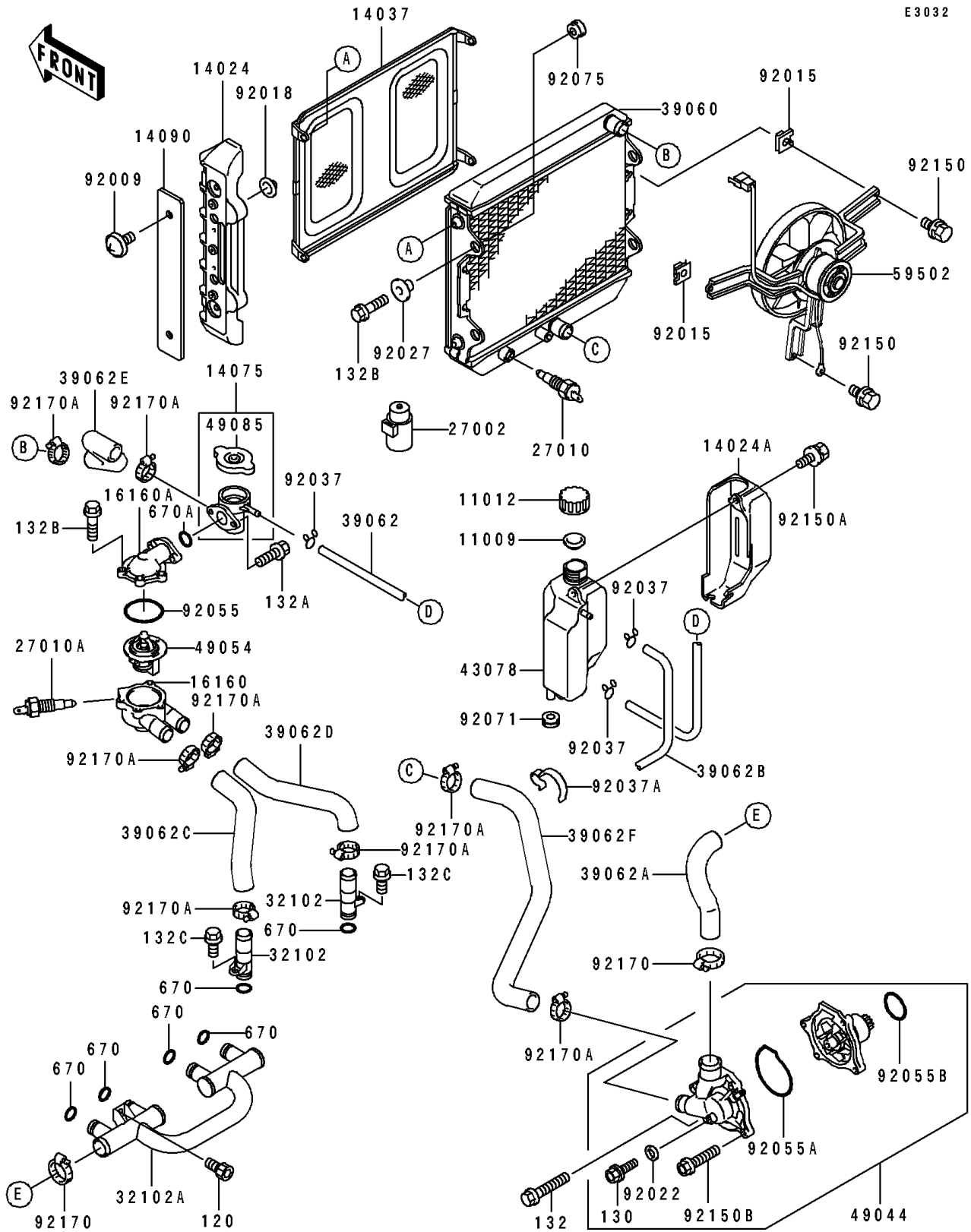


# 1996 Eliminator 600 PARTS DIAGRAM

Radiator

E3032



# 1996 Eliminator 600 PARTS LIST

## Radiator

ITEM NAME	PART NUMBER	QUANTITY
GASKET,RESERVOIR TANK CAP (Ref # 11009)	11009-1145	1
CAP (Ref # 11012)	11012-1084	1
COVER,RADIATOR (Ref # 14024)	14024-1221	2
COVER,RESERVOIR (Ref # 14024A)	14024-1222	1
SCREEN (Ref # 14037)	14037-1080	1
CAP-ASSY,RADIATOR (Ref # 14075)	14075-1085	1
COVER,RADIATOR (Ref # 14090)	14090-1613	2
BODY,THERMOSTAT,LWR (Ref # 16160)	16160-1112	1
BODY,THERMOSTAT,UPP (Ref # 16160A)	16160-1113	1
RELAY-ASSY (Ref # 27002)	27002-1051	1
SWITCH,FAN (Ref # 27010)	27010-1167	1
SWITCH,SENSOR WATER (Ref # 27010A)	27010-1239	1
PIPE (Ref # 32102)	32102-1043	2
PIPE (Ref # 32102A)	32102-1893	1
RADIATOR (Ref # 39060)	39060-1070	1
HOSE-COOLING,5.5X10.5X950 (Ref # 39062)	39062-1069	1
HOSE-COOLING,PUMP-CYLINDER (Ref # 39062A)	39062-1111	1
HOSE-COOLING (Ref # 39062B)	39062-1125	1
HOSE-COOLING,HEAD-THERMO,LH (Ref # 39062C)	39062-1178	1
HOSE-COOLING,HEAD-THERMO,RH (Ref # 39062D)	39062-1179	1
HOSE-COOLING,CAP-RADIATOR (Ref # 39062E)	39062-1180	1
HOSE-COOLING,RADIATOR-PUMP (Ref # 39062F)	39062-1181	1
RESERVOIR (Ref # 43078)	43078-1072	1
PUMP-WATER (Ref # 49044)	49044-1077	1
THERMOSTAT (Ref # 49054)	49054-1055	1
CAP-ASSY-PRESSURE (Ref # 49085)	49085-1066	1
FAN-ASSY (Ref # 59502)	59502-1075	1
SCREW,6X10,WHITE (Ref # 92009)	92009-1286	4
NUT (Ref # 92015)	92015-1487	2

# 1996 Eliminator 600 PARTS LIST

## Radiator

ITEM NAME	PART NUMBER	QUANTITY
NUT,PUSH,3MM (Ref # 92018)	92018-005	6
WASHER,6MM (Ref # 92022)	92022-1976	1
COLLAR,L=11.1 (Ref # 92027)	92027-194	4
CLAMP,TUBE (Ref # 92037)	92037-147	3
CLAMP,HOSE (Ref # 92037A)	92037-1552	1
RING-O,44.7X2.4 (Ref # 92055)	92055-1279	1
RING-O,WATER PUMP (Ref # 92055A)	92055-1315	1
RING-O,33.2X2.4 (Ref # 92055B)	92055-1424	1
GROMMET (Ref # 92071)	92071-1115	1
DAMPER (Ref # 92075)	92075-277	4
BOLT,6X12 (Ref # 92150)	92150-1186	3
BOLT (Ref # 92150A)	92150-1198	1
BOLT,6X22 (Ref # 92150B)	92150-1379	3
CLAMP,COOLING HOSE (Ref # 92170)	92170-1284	2
CLAMP,COOLING HOSE (Ref # 92170A)	92170-1285	8
BOLT-SOCKET,6X12 (Ref # 120)	120P0612	2
BOLT-FLANGED,6X10,BLACK (Ref # 130)	130C0610	1
BOLT-FLANGED-SMALL (Ref # 132)	132E0645	1
BOLT-FLANGED-SMALL (Ref # 132A)	132G0616	2
BOLT-FLANGED-SMALL (Ref # 132B)	132G0620	8
BOLT-FLANGED-SMALL (Ref # 132C)	132J0612	2
O RING,16MM (Ref # 670)	670B2016	6
O RING,20MM (Ref # 670A)	670B2020	1