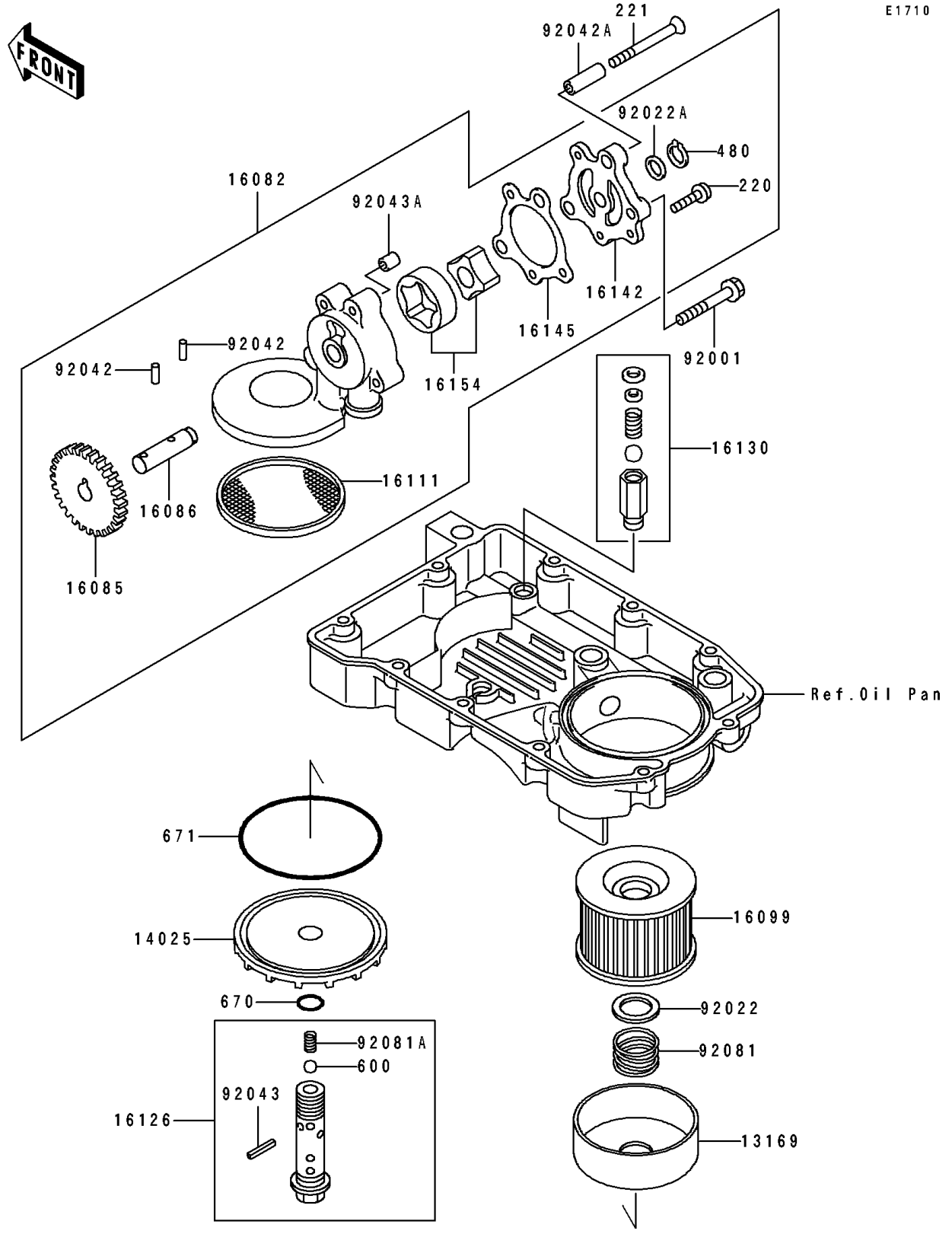


# 1996 Eliminator 600 PARTS DIAGRAM

Oil Pump/Oil Filter

E1710



# 1996 Eliminator 600 PARTS LIST

## Oil Pump/Oil Filter

| ITEM NAME                              | PART NUMBER | QUANTITY |
|--|-------------|----------|
| PLATE,OIL FILTER (Ref # 13169)         | 13169-1110  | 1        |
| COVER,OIL FILTER,F.BLACK (Ref # 14025) | 14025-1422  | 1        |
| PUMP-ASSY-OIL (Ref # 16082)            | 16082-1139  | 1        |
| GEAR (Ref # 16085)                     | 16085-1284  | 1        |
| SHAFT,OIL PUMP (Ref # 16086)           | 16086-004   | 1        |
| ELEMENT-OIL FILTER (Ref # 16099)       | 16099-003   | 1        |
| FILTER,OIL PUMP (Ref # 16111)          | 16111-004   | 1        |
| VALVE,OIL FILTER (Ref # 16126)         | 16126-1108  | 1        |
| VALVE-ASSY-RELIEF (Ref # 16130)        | 16130-1001  | 1        |
| COVER-PUMP (Ref # 16142)               | 16142-005   | 1        |
| GASKET,OIL PUMP COVER (Ref # 16145)    | 16145-004   | 1        |
| ROTOR-PUMP (Ref # 16154)               | 16154-003   | 1        |
| BOLT,FLANGED,6X45 (Ref # 92001)        | 92001-165   | 1        |
| WASHER,20.5X30X1 (Ref # 92022)         | 92022-1012  | 1        |
| WASHER,11.2X15X1 (Ref # 92022A)        | 92022-311   | 1        |
| PIN,DOWEL,4X12.8 (Ref # 92042)         | 92042-041   | 2        |
| PIN,DOWEL,8X28 (Ref # 92042A)          | 92042-050   | 2        |
| PIN,SPRING,2X20 (Ref # 92043)          | 92043-111   | 1        |
| PIN,DOWEL,8X10 (Ref # 92043A)          | 92043-1302  | 1        |
| SPRING,OIL FILTER (Ref # 92081)        | 92081-1018  | 1        |
| SPRING (Ref # 92081A)                  | 92081-109   | 1        |
| SCREW-PAN-CROS,6X18 (Ref # 220)        | 220B0618    | 3        |
| SCREW-CSK-CROS,6X55 (Ref # 221)        | 221B0655    | 2        |
| CIRCLIP-TYPE-C,11MM (Ref # 480)        | 480J1100    | 1        |
| BALL-STEEL,3/8" (Ref # 600)            | 600A1200    | 1        |
| O RING,16MM (Ref # 670)                | 670B2016    | 1        |
| O RING,90MM (Ref # 671)                | 671B2590    | 1        |