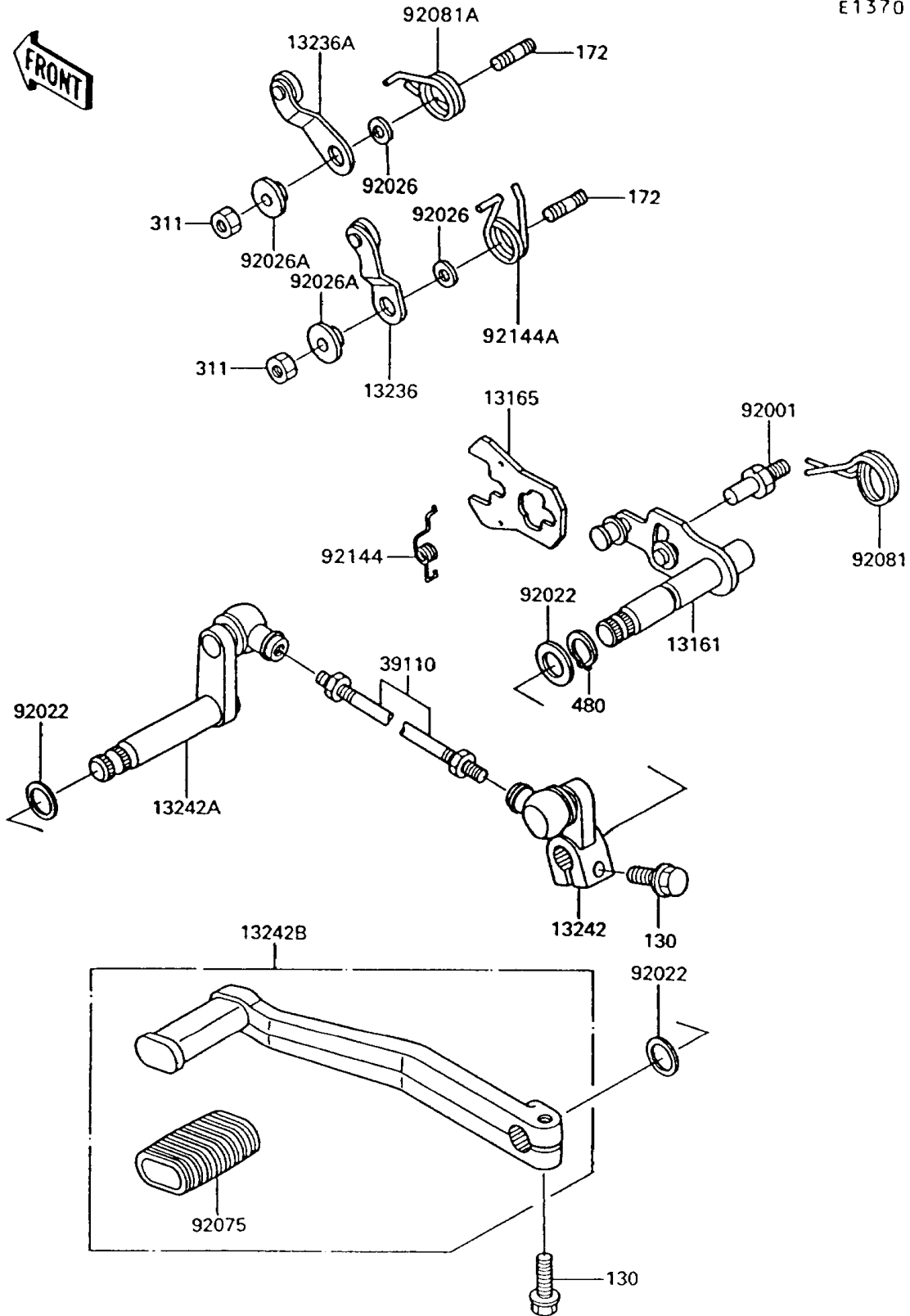


# 1994 Voyager XII PARTS DIAGRAM

Gear Change Mechanism

E1370



# 1994 Voyager XII PARTS LIST

## Gear Change Mechanism

| ITEM NAME                                 | PART NUMBER | QUANTITY |
|---|-------------|----------|
| BOLT-FLANGED,6X20 (Ref # 130)             | 130P0620    | 2        |
| BOLT-STUD,6X12 (Ref # 172)                | 172G0612    | 2        |
| NUT-HEX,6MM (Ref # 311)                   | 311G0600    | 2        |
| CIRCLIP-TYPE-C,13MM (Ref # 480)           | 480J1300    | 1        |
| LEVER-COMP-CHANGE SHAFT (Ref # 13161)     | 13161-1146  | 1        |
| PAWL (Ref # 13165)                        | 13165-1120  | 1        |
| LEVER-COMP,NEUTRAL POSITION (Ref # 13236) | 13236-1143  | 1        |
| LEVER-COMP,GEAR POSITION (Ref # 13236A)   | 13236-1144  | 1        |
| LEVER-ASSY-CHANGE (Ref # 13242)           | 13242-1194  | 1        |
| LEVER-ASSY-CHANGE,LINK (Ref # 13242A)     | 13242-1208  | 1        |
| LEVER-ASSY-CHANGE,PEDAL (Ref # 13242B)    | 13242-1237  | 1        |
| ROD-ASSY-TIE,L=90,BLACK (Ref # 39110)     | 39110-1008  | 1        |
| BOLT,RETURN SPRING (Ref # 92001)          | 92001-1455  | 1        |
| WASHER,13.3X18X1 (Ref # 92022)            | 92022-1772  | 3        |
| SPACER,6.3X12X1.0 (Ref # 92026)           | 92026-094   | 2        |
| SPACER (Ref # 92026A)                     | 92026-1217  | 2        |
| DAMPER,CHANGE PEDAL (Ref # 92075)         | 92075-1585  | 1        |
| SPRING,CHANGE PEDAL RETURN (Ref # 92081)  | 92081-1869  | 1        |
| SPRING,GEAR LEVER (Ref # 92081A)          | 92081-1942  | 1        |
| SPRING (Ref # 92144)                      | 92144-1029  | 1        |
| SPRING,NEUTRAL LEVER (Ref # 92144A)       | 92144-1762  | 1        |