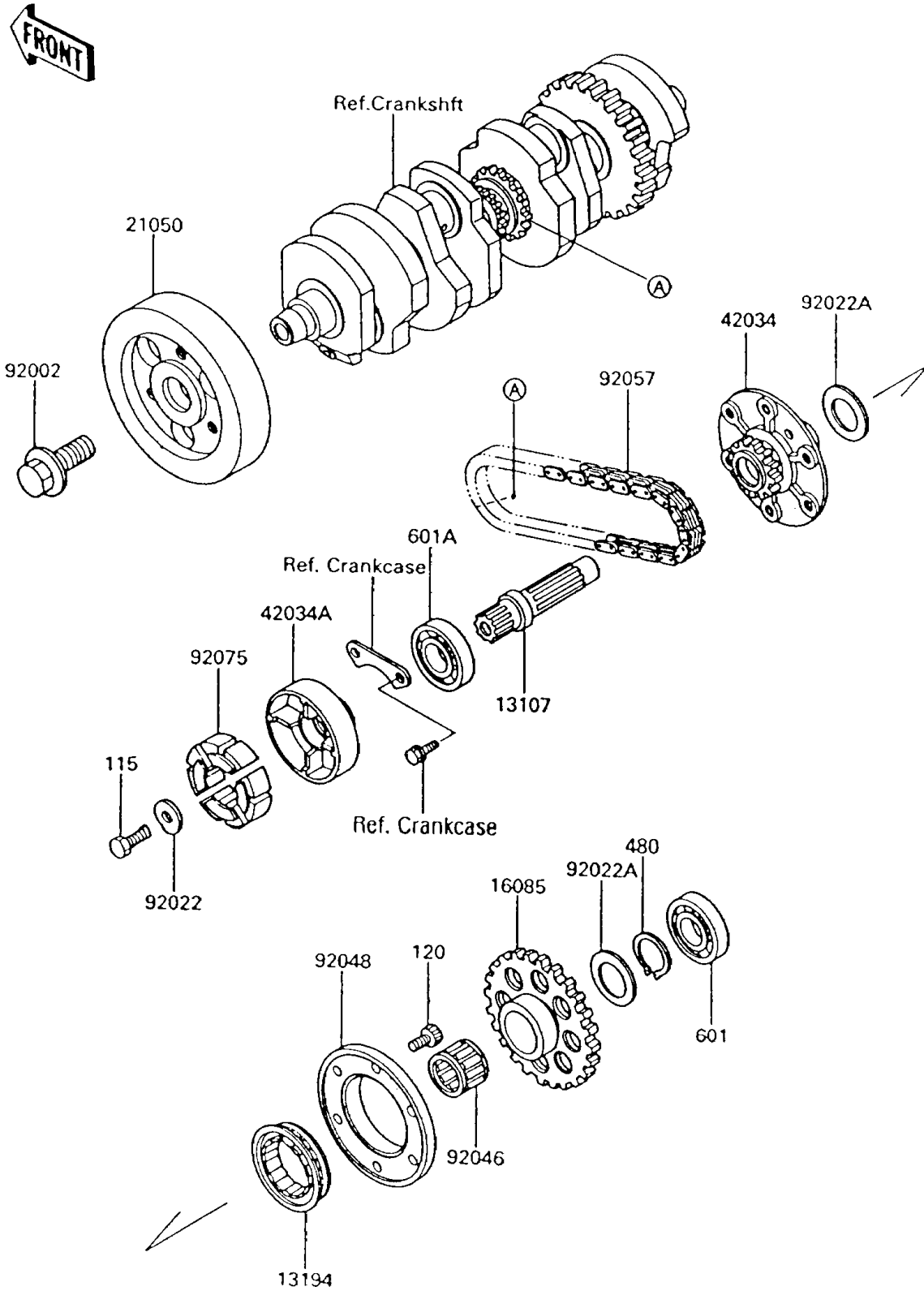


# 1994 Voyager XII PARTS DIAGRAM

Secondary Shaft

E1322



# 1994 Voyager XII PARTS LIST

## Secondary Shaft

| ITEM NAME                             | PART NUMBER | QUANTITY |
|---------------------------------------|-------------|----------|
| BOLT-SMALL-UPSET (Ref # 115)          | 115G0820    | 1        |
| BOLT-SOCKET,6X12 (Ref # 120)          | 120P0612    | 6        |
| CIRCLIP-TYPE-C,25MM (Ref # 480)       | 480J2500    | 1        |
| BEARING-BALL (Ref # 601)              | 601A6203Z   | 1        |
| BEARING-BALL,#6204C3 (Ref # 601A)     | 601B6204    | 1        |
| SHAFT (Ref # 13107)                   | 13107-1192  | 1        |
| CLUTCH-ONEWAY (Ref # 13194)           | 13194-1096  | 1        |
| GEAR,ONEWAY CLUTCH (Ref # 16085)      | 16085-1152  | 1        |
| FLYWHEEL (Ref # 21050)                | 21050-1117  | 1        |
| COUPLING (Ref # 42034)                | 42034-1082  | 1        |
| COUPLING (Ref # 42034A)               | 42034-1083  | 1        |
| BOLT,14X36 (Ref # 92002)              | 92002-1862  | 1        |
| WASHER,8X22X3 (Ref # 92022)           | 92022-1518  | 1        |
| WASHER,25.3X32X0.5 (Ref # 92022A)     | 92022-225   | 2        |
| BEARING-NEEDLE,K253020S (Ref # 92046) | 92046-1022  | 1        |
| RACE,ONEWAY CLUTCH (Ref # 92048)      | 92048-1065  | 1        |
| CHAIN,GENERATOR (Ref # 92057)         | 92057-1276  | 1        |
| DAMPER,COUPLING (Ref # 92075)         | 92075-1790  | 4        |