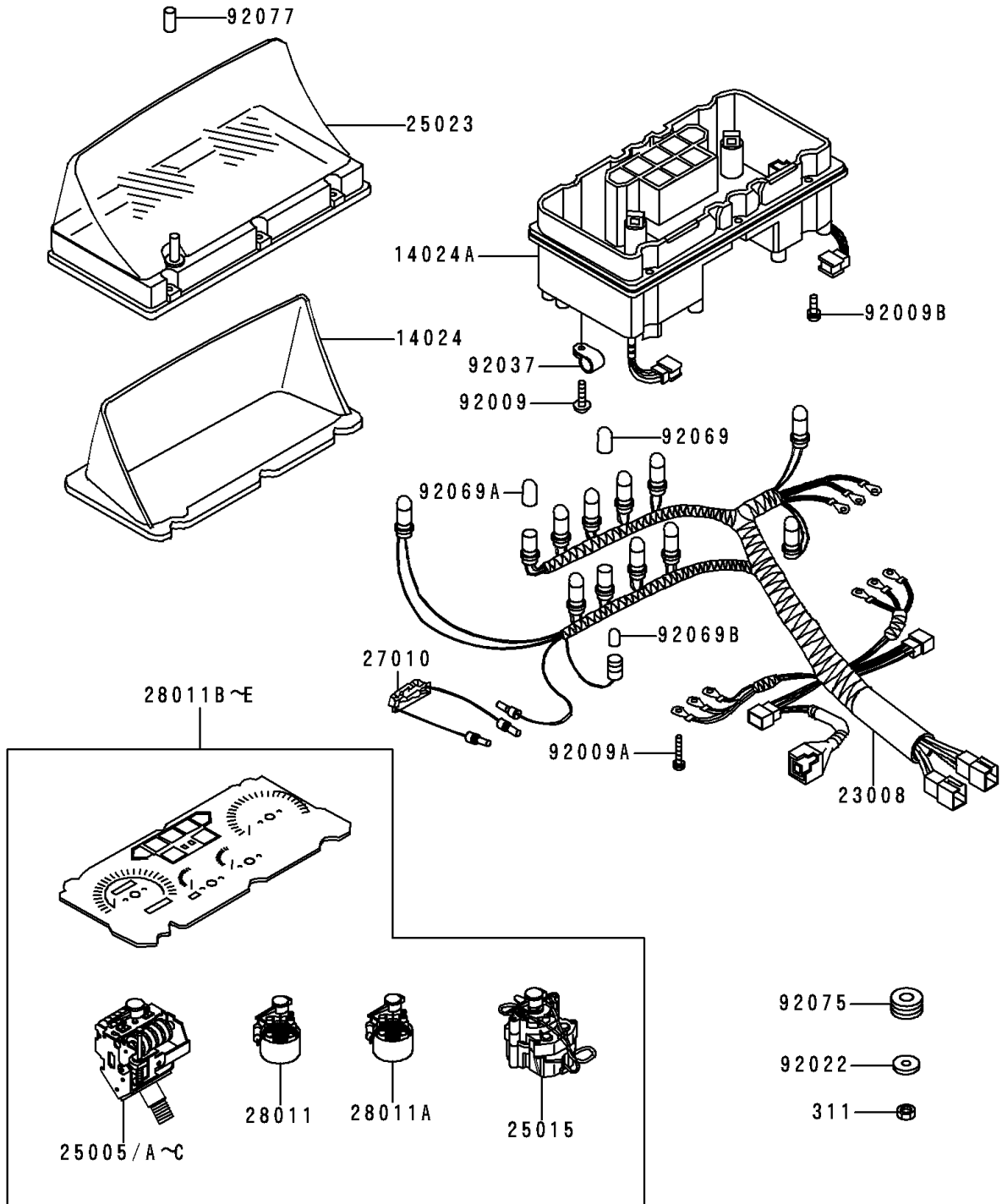


1996 Voyager XII PARTS DIAGRAM

Meter(s)

F2530



1996 Voyager XII PARTS LIST

Meter(s)

| ITEM NAME | PART NUMBER | QUANTITY |
|--------------------------------------|-------------|----------|
| NUT-HEX (Ref # 311) | 311B0500 | 4 |
| COVER,METER,UPP (Ref # 14024) | 14024-1179 | 1 |
| COVER,METER,LWR (Ref # 14024A) | 14024-1180 | 1 |
| SOCKET-ASSY,METER (Ref # 23008) | 23008-1344 | 1 |
| TACHOMETER,X1000R/MIN (Ref # 25015) | 25015-1255 | 1 |
| COVER-METER CASE,UPP (Ref # 25023) | 25023-1133 | 1 |
| SWITCH,METER (Ref # 27010) | 27010-1231 | 1 |
| METER,FUEL (Ref # 28011) | 28011-1079 | 1 |
| METER,TEMP (Ref # 28011A) | 28011-1082 | 1 |
| SCREW,TAPPING,4X16 (Ref # 92009) | 92009-1163 | 1 |
| SCREW,3X22 (Ref # 92009A) | 92009-1293 | 6 |
| SCREW,3X10 (Ref # 92009B) | 92009-1382 | 6 |
| WASHER,5.2X16X1.2 (Ref # 92022) | 92022-263 | 4 |
| CLAMP,CODE (Ref # 92037) | 92037-1769 | 1 |
| BULB,12V 3.4W (Ref # 92069) | 92069-1007 | 11 |
| BULB,12V3W T-7 (Ref # 92069A) | 92069-1020 | 1 |
| BULB,12V 1.7W (Ref # 92069B) | 92069-1059 | 1 |
| DAMPER (Ref # 92075) | 92075-1805 | 4 |
| KNOB,RESET TRIP (Ref # 92077) | 92077-1017 | 1 |
| SPEEDOMETER,MPH (Ref # 25005) | 25005-1323 | 1 |
| SPEEDOMETER,KPH (Ref # 25005A) | 25005-1337 | 1 |
| METER,FACE PLATE(MPH) (Ref # 28011B) | 28011-1112 | 1 |
| METER,FACE PLATE(KPH) (Ref # 28011C) | 28011-1113 | 1 |