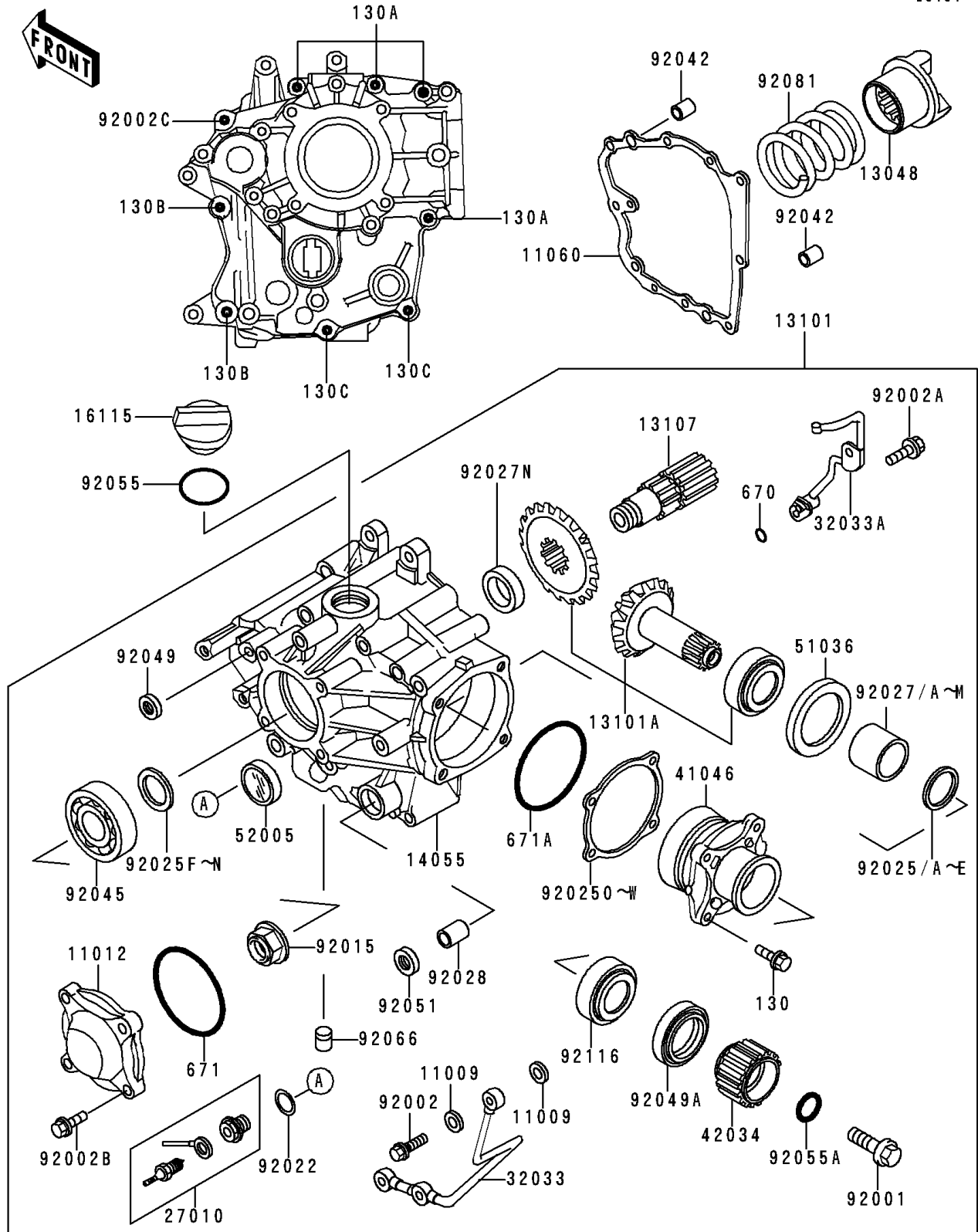


1997 Voyager XII PARTS DIAGRAM

Front Bevel Gear

E3131



1997 Voyager XII PARTS LIST

Front Bevel Gear

| ITEM NAME | PART NUMBER | QUANTITY |
|--|-------------|----------|
| GASKET,OIL PIPE,8.2X14X1.0 (Ref # 11009) | 11009-1344 | 6 |
| CAP,BEARING (Ref # 11012) | 11012-1489 | 1 |
| GASKET,GEAR CASE (Ref # 11060) | 11060-1094 | 1 |
| CAM-DAMPER (Ref # 13048) | 13048-1074 | 1 |
| GEAR-ASSY,FRONT BEVEL (Ref # 13101) | 13101-1089 | 1 |
| GEAR-ASSY,FRONT BEVEL (Ref # 13101A) | 13101-5027 | 1 |
| SHAFT,BEVEL,FR (Ref # 13107) | 13107-1263 | 1 |
| CASE-GEAR,FRONT BEVEL (Ref # 14055) | 14055-1066 | 1 |
| CAP-OIL FILLER (Ref # 16115) | 16115-1009 | 1 |
| SWITCH (Ref # 27010) | 27010-1373 | 1 |
| PIPE,OUTSIDE (Ref # 32033) | 32033-1940 | 1 |
| PIPE,INSIDE (Ref # 32033A) | 32033-1941 | 1 |
| HOUSING-BEARING (Ref # 41046) | 41046-1074 | 1 |
| COUPLING,FR DRIVEN (Ref # 42034) | 42034-1091 | 1 |
| CUP (Ref # 51036) | 51036-1002 | 1 |
| GAUGE,OIL LEVEL (Ref # 52005) | 52005-1057 | 1 |
| BOLT,FLANGED,12X42 (Ref # 92001) | 92001-1169 | 1 |
| BOLT,BANJO,8X20 (Ref # 92002) | 92002-1618 | 3 |
| BOLT,6X14 (Ref # 92002A) | 92002-1656 | 2 |
| BOLT,SOCKET,6X25 (Ref # 92002B) | 92002-1696 | 4 |
| BOLT,6X50 (Ref # 92002C) | 92002-1779 | 1 |
| NUT,24MM (Ref # 92015) | 92015-1554 | 1 |
| WASHER,16XX22X1.0 (Ref # 92022) | 92022-1812 | 1 |
| SHIM,25.2X29.8X1.70 (Ref # 92025) | 92025-1072 | AR |
| SHIM,25.2X29.8X1.72 (Ref # 92025A) | 92025-1073 | AR |
| SHIM,25.2X29.8X1.74 (Ref # 92025B) | 92025-1074 | AR |
| SHIM,25.2X29.8X1.76 (Ref # 92025C) | 92025-1075 | AR |
| SHIM,25.2X29.8X1.78 (Ref # 92025D) | 92025-1076 | AR |
| SHIM,25.2X29.8X1.80 (Ref # 92025E) | 92025-1077 | AR |

1997 Voyager XII PARTS LIST

Front Bevel Gear

| ITEM NAME | PART NUMBER | QUANTITY |
|--------------------------------------|-------------|----------|
| SHIM,25.3X36X0.15 (Ref # 92025F) | 92025-1688 | AR |
| SHIM,25.3X36X0.50 (Ref # 92025G) | 92025-1689 | AR |
| SHIM,25.3X36X0.60 (Ref # 92025H) | 92025-1690 | AR |
| SHIM,25.3X36X0.70 (Ref # 92025I) | 92025-1691 | AR |
| SHIM,25.3X36X0.80 (Ref # 92025J) | 92025-1692 | AR |
| SHIM,25.3X36X0.90 (Ref # 92025K) | 92025-1693 | AR |
| SHIM,25.3X36X1.00 (Ref # 92025L) | 92025-1694 | AR |
| SHIM,25.3X36X1.10 (Ref # 92025M) | 92025-1695 | AR |
| SHIM,25.3X36X1.20 (Ref # 92025N) | 92025-1696 | AR |
| SHIM,T=0.10 (Ref # 92025O) | 92025-1724 | AR |
| SHIM,T=0.15 (Ref # 92025P) | 92025-1725 | AR |
| BOLT-FLANGED,6X25 (Ref # 130) | 130P0625 | 4 |
| BOLT-FLANGED (Ref # 130A) | 130Z06100 | 4 |
| BOLT-FLANGED (Ref # 130B) | 130Z0630 | 2 |
| BOLT-FLANGED (Ref # 130C) | 130Z0650 | 2 |
| O RING,6MM (Ref # 670) | 670B1506 | 1 |
| O RING,65MM (Ref # 671) | 671B2565 | 1 |
| O RING (Ref # 671A) | 671B2575 | 1 |
| SHIM,T=0.50 (Ref # 92025Q) | 92025-1726 | AR |
| SHIM,T=0.60 (Ref # 92025R) | 92025-1727 | AR |
| SHIM,T=0.70 (Ref # 92025S) | 92025-1728 | AR |
| SHIM,T=0.80 (Ref # 92025T) | 92025-1729 | AR |
| SHIM,T=0.90 (Ref # 92025U) | 92025-1730 | AR |
| SHIM,T=1.00 (Ref # 92025V) | 92025-1731 | AR |
| SHIM,T=1.20 (Ref # 92025W) | 92025-1732 | AR |
| COLLAR,25.2X29.8X22.8 (Ref # 92027) | 92027-1152 | AR |
| COLLAR,25.2X29.8X22.9 (Ref # 92027A) | 92027-1153 | AR |
| COLLAR,25.2X29.8X23 (Ref # 92027B) | 92027-1154 | AR |
| COLLAR,25.2X29.8X23.1 (Ref # 92027C) | 92027-1155 | AR |

1997 Voyager XII PARTS LIST

Front Bevel Gear

| ITEM NAME | PART NUMBER | QUANTITY |
|--------------------------------------|-------------|----------|
| COLLAR,25.2X29.8X23.2 (Ref # 92027D) | 92027-1156 | AR |
| COLLAR,25.2X29.8X23.3 (Ref # 92027E) | 92027-1157 | AR |
| COLLAR,25.2X29.8X23.4 (Ref # 92027F) | 92027-1158 | AR |
| COLLAR,25.2X29.8X23.5 (Ref # 92027G) | 92027-1159 | AR |
| COLLAR,25.2X29.8X23.6 (Ref # 92027H) | 92027-1160 | AR |
| COLLAR,25.2X29.8X23.7 (Ref # 92027I) | 92027-1161 | AR |
| COLLAR,25.2X29.8X23.8 (Ref # 92027J) | 92027-1162 | AR |
| COLLAR,25.2X29.8X23.9 (Ref # 92027K) | 92027-1163 | AR |
| COLLAR,25.2X29.8X24 (Ref # 92027L) | 92027-1164 | AR |
| COLLAR,25.2X29.8X24.1 (Ref # 92027M) | 92027-1165 | AR |
| COLLAR,25.3X36X10 (Ref # 92027N) | 92027-1968 | 1 |
| BUSHING,13X15X20 (Ref # 92028) | 92028-1251 | 1 |
| PIN,DOWEL,6.3X8X14 (Ref # 92042) | 92042-007 | 2 |
| BEARING-BALL,6305C2 (Ref # 92045) | 92045-1165 | 1 |
| SEAL-OIL,SD-8187 (Ref # 92049) | 92049-1017 | 1 |
| SEAL-OIL,TC35527 (Ref # 92049A) | 92049-1038 | 1 |
| SEAL-OIL,TB13225.5 (Ref # 92051) | 92051-005 | 1 |
| RING-O,31.5X2.6 (Ref # 92055) | 92055-049 | 1 |
| RING-O,ID=18.64 (Ref # 92055A) | 92055-1044 | 1 |
| PLUG,OIL LINE,7.2X8 (Ref # 92066) | 92066-1012 | 1 |
| SPRING,CAM DAMPER (Ref # 92081) | 92081-1859 | 1 |
| BEARING-ROLLER,4T30205 (Ref # 92116) | 92116-1003 | 1 |