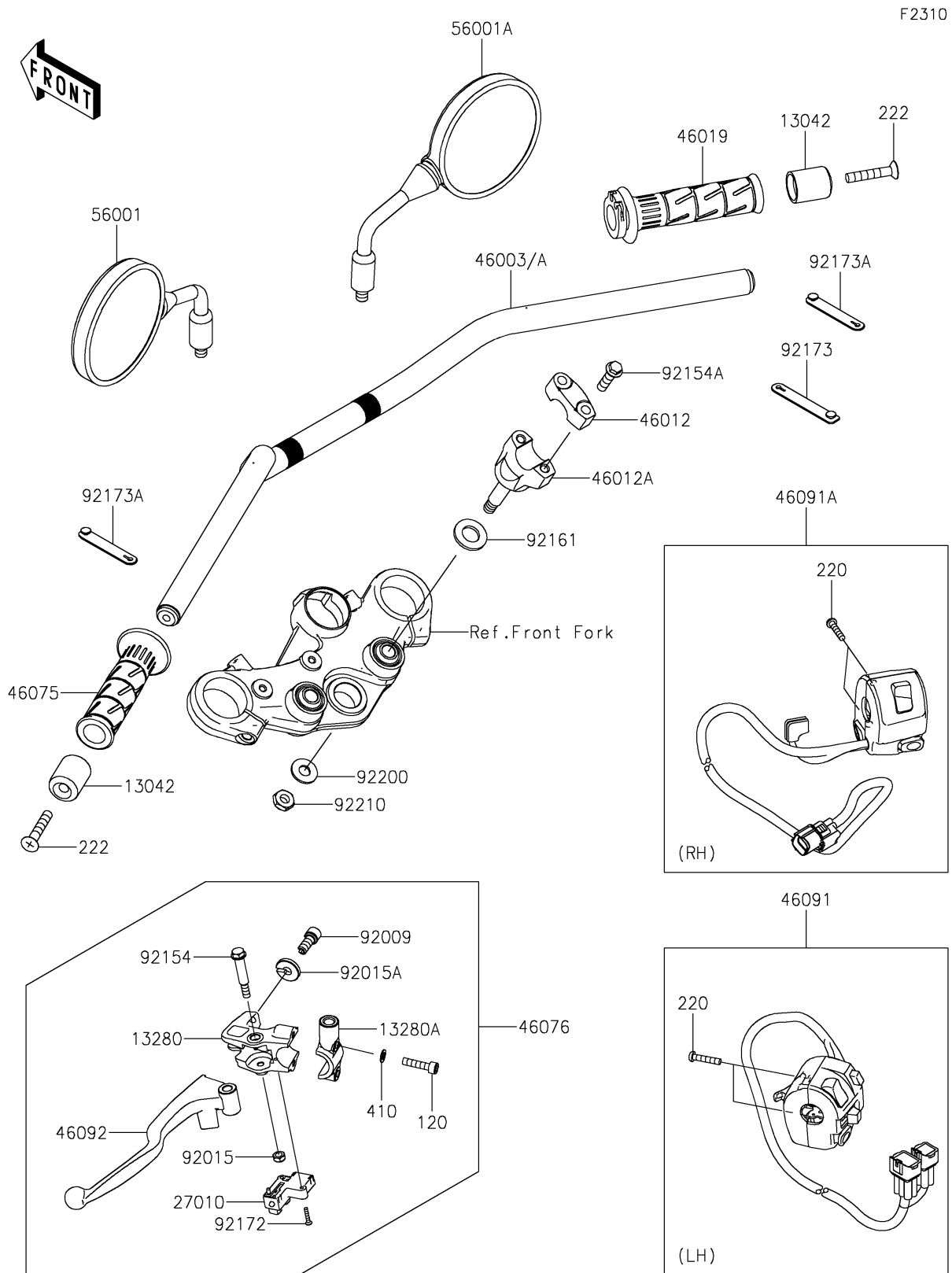


# 2024 ELIMINATOR®

## PARTS DIAGRAM

### Handlebar



# 2024 ELIMINATOR®

## PARTS LIST

### Handlebar

ITEM NAME	PART NUMBER	QUANTITY
WEIGHT,HANDLE (Ref # 13042)	13042-0032	2
HOLDER,LEVER (Ref # 13280)	13280-0929	1
HOLDER,MIRROR (Ref # 13280A)	13280-0930	1
SWITCH,CLUTCH (Ref # 27010)	27010-0729	1
HANDLE,F.S.BLACK (Ref # 46003)	46003-0825-18R	1
HANDLE,F.M.GRAY (Ref # 46003A)	46003-0825-26M	1
HOLDER-HANDLE,UPP,F.BLACK (Ref # 46012)	46012-0101-21	2
HOLDER-HANDLE,LWR,F.BLACK (Ref # 46012A)	46012-0419-21	2
GRIP-ASSY,THROTTLE (Ref # 46019)	46019-0060	1
GRIP,HANDLE,LH (Ref # 46075)	46075-0564	1
LEVER-ASSY-GRIP,CLUTCH (Ref # 46076)	46076-0154	1
HOUSING-ASSY-CONTROL,LH (Ref # 46091)	46091-0604	1
HOUSING-ASSY-CONTROL,RH (Ref # 46091A)	46091-0656	1
LEVER-GRIP,CLUTCH (Ref # 46092)	46092-0562	1
MIRROR-ASSY,LH (Ref # 56001)	56001-0451	1
MIRROR-ASSY,RH (Ref # 56001A)	56001-0452	1
SCREW,CABLE ADJUST,8MM,BLACK (Ref # 92009)	92009-1134	1
NUT,LOCK,6MM,BLACK (Ref # 92015)	92015-1191	1
NUT,CABLE ADJUST LOCK,8MM,BLK (Ref # 92015A)	92015-1197	1
BOLT,FLANGED,6X44 (Ref # 92154)	92154-2331	1
BOLT,FLANGED,8X30 (Ref # 92154A)	92154-3840	4
DAMPER (Ref # 92161)	92161-0037	2
SCREW,3X16 (Ref # 92172)	92172-0183	2
CLAMP (Ref # 92173)	92173-2194	1
CLAMP (Ref # 92173A)	92173-2199	2
WASHER,10.5X24X2 (Ref # 92200)	92200-1844	2
NUT,LOCK,10MM (Ref # 92210)	92210-0784	2
BOLT-SOCKET,6X25 (Ref # 120)	120CB0625	2
SCREW-PAN-CROS,5X25 (Ref # 220)	220AB0525	4

# 2024 ELIMINATOR®

## PARTS LIST

### Handlebar

ITEM NAME	PART NUMBER	QUANTITY
SCREW-CSK-RD-CROS,8X45 (Ref # 222)	222AB0845	2
WASHER-PLAIN-SMALL,6MM (Ref # 410)	410AB0600	2