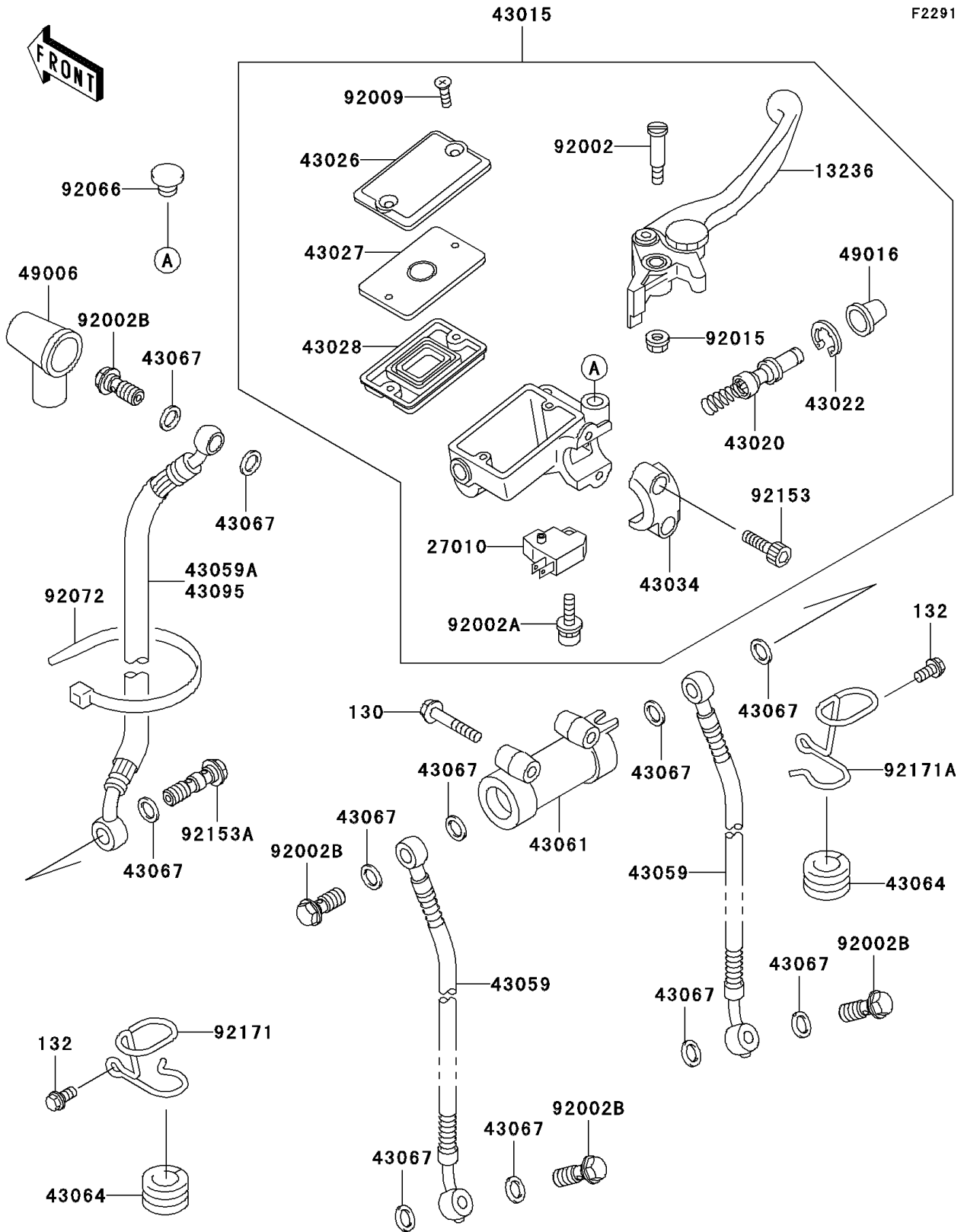


2005 Concours PARTS DIAGRAM

Front Master Cylinder



2005 Concours PARTS LIST

Front Master Cylinder

ITEM NAME	PART NUMBER	QUANTITY
BOLT-FLANGED,6X60 (Ref # 130)	130G0660	1
BOLT-FLANGED-SMALL (Ref # 132)	132E0612	1
LEVER-COMP,FRONT BRAKE (Ref # 13236)	13236-1185	1
SWITCH,BRAKE (Ref # 27010)	27010-1170	1
CYLINDER-ASSY-MASTER,FR (Ref # 43015)	43015-1498	1
PISTON-COMP-BRAKE,FR (Ref # 43020)	43020-1054	1
STOPPER-BRAKE,PISTON (Ref # 43022)	43022-1010	1
CAP-BRAKE (Ref # 43026)	43026-1076	1
PLATE-DIAPHRAGM (Ref # 43027)	43027-1055	1
DIAPHRAGM,MASTER CYLINDER (Ref # 43028)	43028-1058	1
HOLDER-BRAKE,MASTER CYLINDER (Ref # 43034)	43034-1053	1
HOSE-BRAKE,FR (Ref # 43059)	43059-1789	1
HOSE-BRAKE,FR,FOR LOW HANDLE (Ref # 43059A)	43059-1791	1
JOINT-BRAKE (Ref # 43061)	43061-1004	1
GROMMET,HOSE CLAMP (Ref # 43064)	43064-007	1
WASHER,10.5X15X1.5 (Ref # 43067)	43067-001	1
HOSE-BRAKE,FR,FOR UP HANDLE (Ref # 43095)	43095-1388	1
BOOT,DUST (Ref # 49006)	49006-1040	1
COVER-SEAL,MASTER CYLINDER (Ref # 49016)	49016-1044	1
BOLT,LEVER SET,BLACK (Ref # 92002)	92002-1322	1
BOLT,SCREW,4X12 (Ref # 92002A)	92002-1323	1
BOLT,OIL,L=23 (Ref # 92002B)	92002-1888	1
SCREW,4MM (Ref # 92009)	92009-1458	1
NUT,FLANGED,6MM,BLACK (Ref # 92015)	92015-1233	1
PLUG,9.5X8,POLYETHYLENE (Ref # 92066)	92066-1077	1
BAND,L=365 (Ref # 92072)	92072-1197	1
BOLT,SOCKET,6X20 (Ref # 92153)	92153-0417	1
BOLT,OIL,L=37 (Ref # 92153A)	92153-0628	1
CLAMP,HOSE,LH (Ref # 92171)	92171-0100	1

2005 Concours PARTS LIST

Front Master Cylinder

ITEM NAME	PART NUMBER	QUANTITY
CLAMP,HOSE,RH (Ref # 92171A)	92171-0101	1