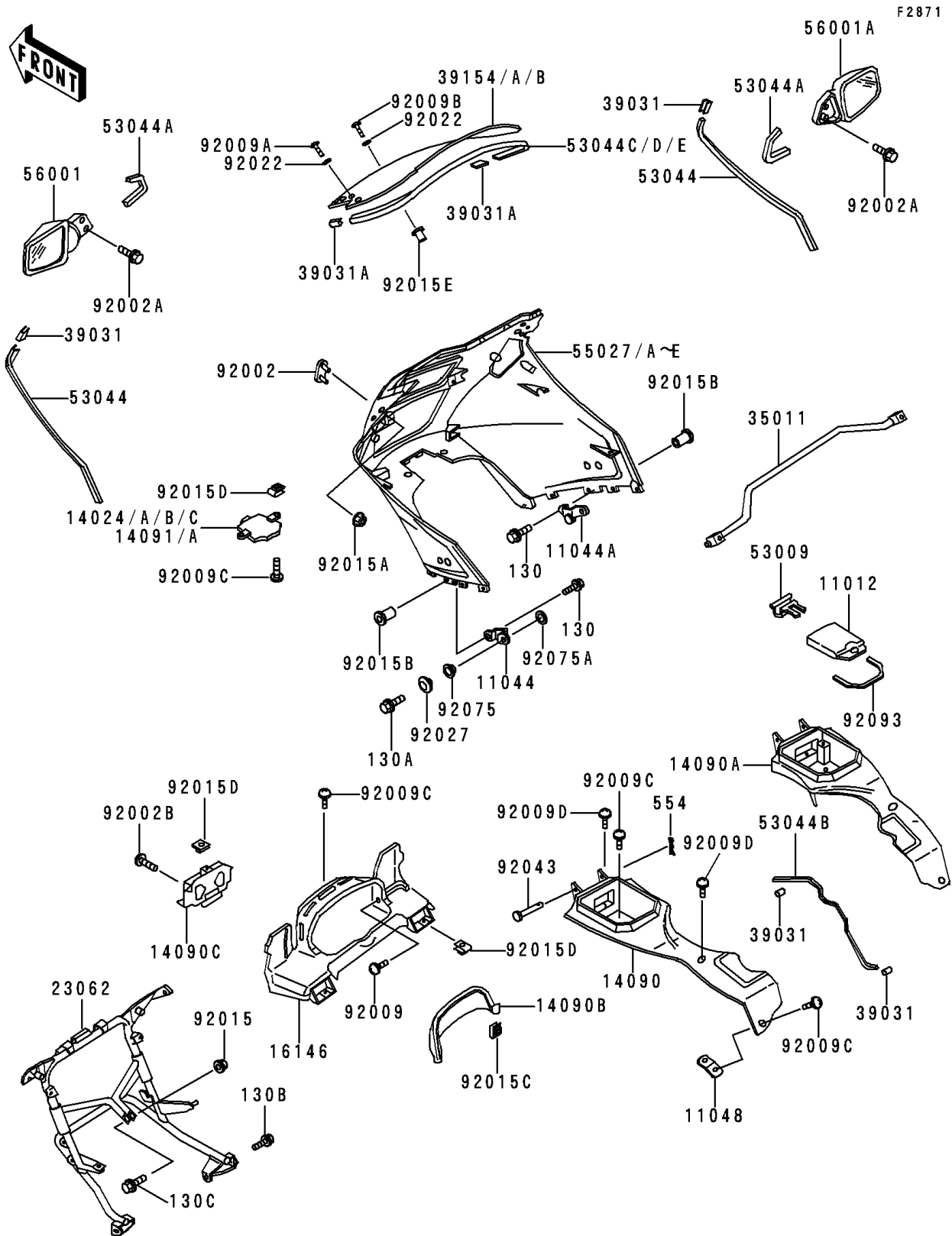


# 1998 Concours PARTS DIAGRAM

Cowling



# 1998 Concours PARTS LIST

## Cowling

ITEM NAME	PART NUMBER	QUANTITY
CAP,INNER COWLING COVER (Ref # 11012)	11012-1878	2
BRACKET,UPPER COWLING,LWR,LH (Ref # 11044)	11044-1907	1
BRACKET,UPPER COWLING,LWR,RH (Ref # 11044A)	11044-1908	1
BRACKET,INNER COWLING,FR (Ref # 11048)	11048-1490	2
COVER,INNER COWLING,LH (Ref # 14090)	14090-1424	1
COVER,INNER COWLING,RH (Ref # 14090A)	14090-1425	1
COVER,METER VISER (Ref # 14090B)	14090-1456	1
COVER,INNER COWLING,CNT (Ref # 14090C)	14090-1481	1
COVER-ASSY,INNER COWLING,FR (Ref # 16146)	16146-1158	1
BRACKET-COMP,UPP COWLING (Ref # 23062)	23062-1100	1
STAY,SIDE COWLING (Ref # 35011)	35011-1340	1
CAP-END,TRIM (Ref # 39031)	39031-1055	6
CAP-END,TRIM (Ref # 39031A)	39031-1063	2
WINDSHIELD,SHORT TYPE (Ref # 39154)	39154-1094	1
WINDSHIELD,LONG TYPE (Ref # 39154A)	39154-1095	1
WINDSHIELD,SUPER LONG TYPE (Ref # 39154B)	39154-1096	1
HINGE,INNER COVER (Ref # 53009)	53009-1086	2
TRIM,COWLING (Ref # 53044)	53044-1157	2
TRIM,MIRROR (Ref # 53044A)	53044-1173	2
TRIM,INNER COWLING (Ref # 53044B)	53044-1184	2
TRIM,WINDSHIELD,SHORT TYPE (Ref # 53044C)	53044-1272	1
TRIM,WINDSHIELD,LONG TYPE (Ref # 53044D)	53044-1273	1
TRIM,WINDSHIELD,SUPER LONG TYP (Ref # 53044E)	53044-1274	1
BOLT-FLANGED,6X10,BLACK (Ref # 130)	130C0610	4
BOLT-FLANGED,6X25 (Ref # 130A)	130J0625	2
BOLT-FLANGED (Ref # 130B)	130J0812	2
BOLT-FLANGED,8X30 (Ref # 130C)	130J0830	1
PIN-SNAP (Ref # 554)	554A0400	2
MIRROR-ASSY,LH (Ref # 56001)	56001-1333	1

# 1998 Concours PARTS LIST

## Cowling

ITEM NAME	PART NUMBER	QUANTITY
MIRROR-ASSY,RH (Ref # 56001A)	56001-1334	1
BOLT,"U" (Ref # 92002)	92002-1800	2
BOLT,6X16 (Ref # 92002A)	92002-1852	4
BOLT,6X12 (Ref # 92002B)	92002-1884	3
SCREW,4X16 (Ref # 92009)	92009-1500	2
SCREW,5X16 (Ref # 92009A)	92009-1654	4
SCREW,5X20 (Ref # 92009B)	92009-1656	6
SCREW,6X14 (Ref # 92009C)	92009-1662	9
SCREW,6X18 (Ref # 92009D)	92009-1663	6
NUT,FLANGED,8MM,BLACK (Ref # 92015)	92015-1183	1
NUT,FLANGED,6MM,BLACK (Ref # 92015A)	92015-1233	4
NUT,STAY,6MM (Ref # 92015B)	92015-1394	4
NUT,4MM (Ref # 92015C)	92015-1593	2
NUT,6MM (Ref # 92015D)	92015-1602	5
NUT,WELL,5MM (Ref # 92015E)	92015-1757	6
WASHER,NYLON,5.3X11.5X1.5 (Ref # 92022)	92022-1521	10
COLLAR,L=13.1,BLACK (Ref # 92027)	92027-1450	2
PIN,4X70 (Ref # 92043)	92043-1501	2
DAMPER,MALE (Ref # 92075)	92075-174	2
DAMPER,FEMALE (Ref # 92075A)	92075-175	2
SEAL,INNER COWLING CAP (Ref # 92093)	92093-1368	2
COVER,UPPER COWLING,LWR,GREEN (Ref # 14024)	14024-1252-DS	1
COVER,UPPER COWLING,LWR,GREEN (Ref # 14024C)	14024-1252-24	1
COWLING-ASSY,UPP,OUTER,GREEN (Ref # 55027)	55027-1083-DS	1
COWLING-ASSY,UPP,OUTER,GREEN (Ref # 55027B)	55027-1083-24	1