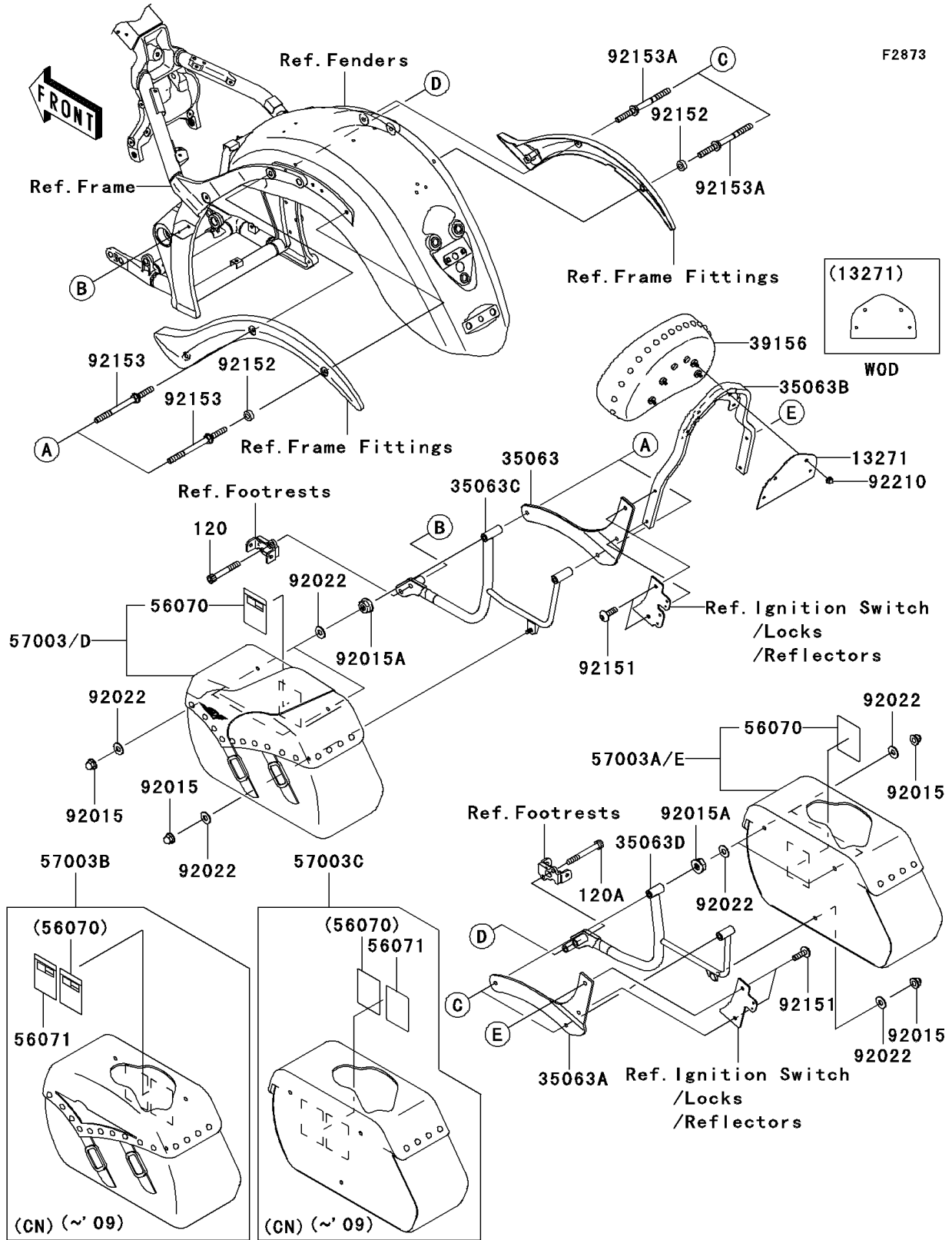


# 2009 Vulcan® 2000 Classic LT PARTS DIAGRAM

Saddlebags



## 2009 Vulcan® 2000 Classic LT PARTS LIST

### Saddlebags

ITEM NAME	PART NUMBER	QUANTITY
BOLT-SOCKET,8X55 (Ref # 120)	120CB0855	2
BOLT-SOCKET,8X65 (Ref # 120A)	120CB0865	2
PLATE,BACKREST (Ref # 13271)	13271-0719	1
STAY,BACKREST,LH (Ref # 35063)	35063-0271	1
STAY,BACKREST,RH (Ref # 35063A)	35063-0272	1
STAY,BACKREST,CNT (Ref # 35063B)	35063-0273	1
STAY,SIDE BAG,LH,F.S.BLACK (Ref # 35063C)	35063-0491-18R	1
STAY,SIDE BAG,RH,F.S.BLACK (Ref # 35063D)	35063-0492-18R	1
PAD,BACKREST,BLACK (Ref # 39156)	39156-0119-MA	1
LABEL-WARNING,SADDLEBAG (Ref # 56070)	56070-0076	2
NUT,CAP,LOCK,8MM,BLACK (Ref # 92015)	92015-1209	6
NUT,FLANGED,8MM (Ref # 92015A)	92015-1409	4
WASHER,8.5X20X1.6,BLACK (Ref # 92022)	92022-1317	10
BOLT,SOCKET,8X25 (Ref # 92151)	92151-1753	4
COLLAR,8.5X16X5.8 (Ref # 92152)	92152-0417	2
BOLT,8MM (Ref # 92153)	92153-1510	2
BOLT,8MM (Ref # 92153A)	92153-1511	2
NUT,CAP,6MM (Ref # 92210)	92210-1252	4
LABEL-WARNING,SADDLEBAG (Ref # 56071)	56071-0001	2
BAG-ASSY,LH (Ref # 57003)	57003-0009	1
BAG-ASSY,RH (Ref # 57003A)	57003-0010	1
BAG-ASSY,LH (Ref # 57003B)	57003-0015	1
BAG-ASSY,RH (Ref # 57003C)	57003-0016	1