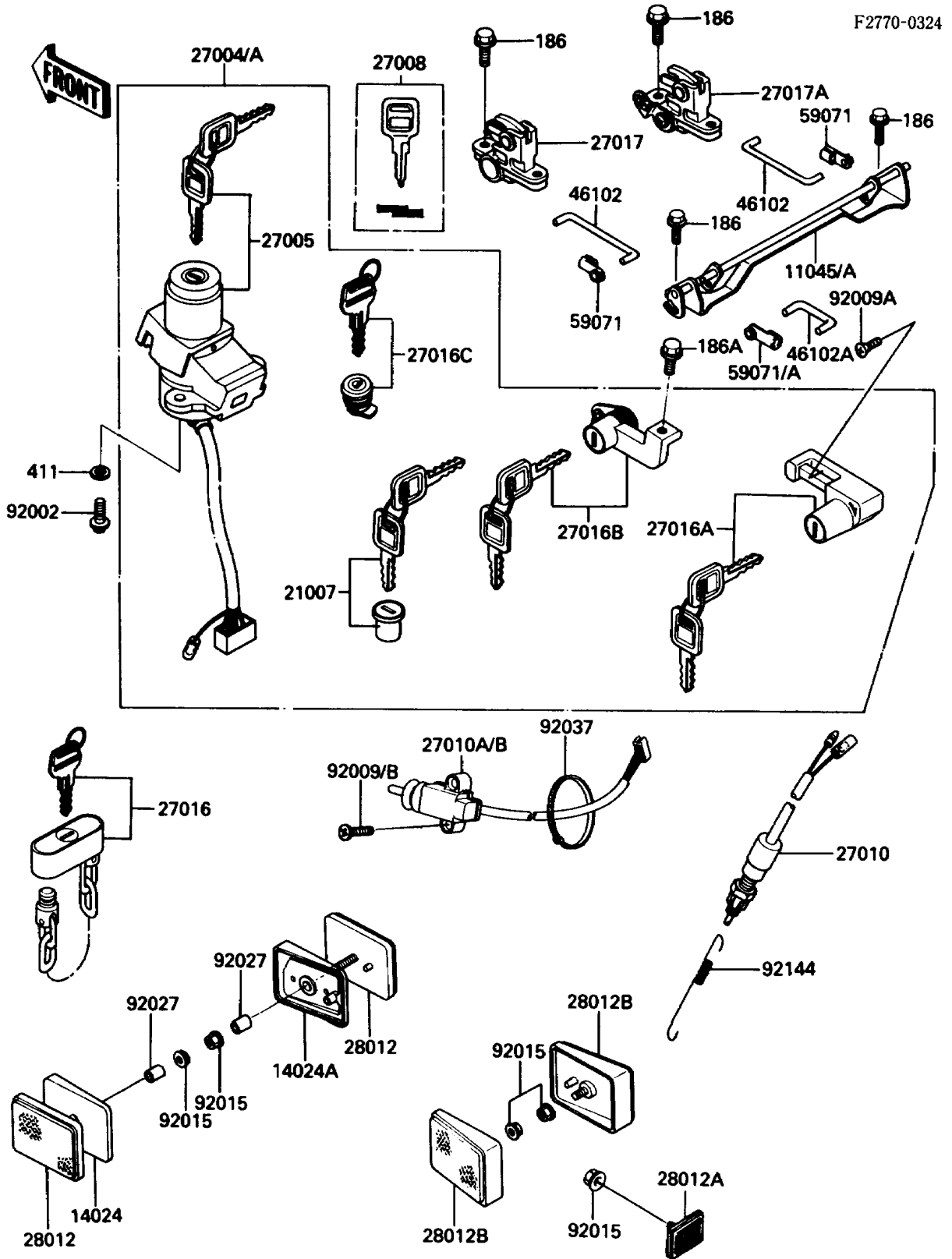


# 1987 Concours PARTS DIAGRAM

Ignition Switch/Locks/Reflectors



# 1987 Concours PARTS LIST

## Ignition Switch/Locks/Reflectors

ITEM NAME	PART NUMBER	QUANTITY
BRACKET,SEAT LOCK (Ref # 11045A)	11045-1544	1
COVER,REFLECTOR,FR (Ref # 14024)	14025-1886	1
COVER,REFLECTOR,FR (Ref # 14024A)	14025-1887	1
ROTOR,LOCK,TANK CAP (Ref # 21007)	21007-5017	1
SWITCH-ASSY (Ref # 27004A)	27004-5312	1
SWITCH-ASSY-IGNITION (Ref # 27005)	27005-5064	1
KEY-LOCK,BLANK (Ref # 27008)	27008-1103	1
SWITCH,REAR BRAKE (Ref # 27010)	27010-1019	1
SWITCH,SIDE STAND (Ref # 27010B)	27010-1220	1
LOCK-ASSY,WHEEL (Ref # 27016)	27016-1051	1
LOCK-ASSY,HELMET (Ref # 27016A)	27016-5111	2
LOCK-ASSY,SEAT (Ref # 27016B)	27016-5112	1
LOCK-ASSY,FAIRING POCKET (Ref # 27016C)	27016-5125	1
LOCK,SEAT,LH (Ref # 27017)	27017-1112	1
LOCK,SEAT,RH (Ref # 27017A)	27017-1113	1
REFLECTOR-REFLEX,FR (Ref # 28012)	28012-1052	2
REFLECTOR-REFLEX,RR (Ref # 28012A)	28012-1054	1
REFLECTOR-REFLEX,RR (Ref # 28012B)	28012-1056	2
ROD,SEAT LOCK,FR (Ref # 46102)	46102-1187	2
ROD,SEAT LOCK,RR (Ref # 46102A)	46102-1188	1
JOINT (Ref # 59071)	59071-1103	2
JOINT (Ref # 59071A)	59071-1125	1
BOLT,TORX,6X16 (Ref # 92002)	92002-1333	2
SCREW,5X12 (Ref # 92009A)	92009-1401	2
SCREW,5X20 (Ref # 92009B)	92009-1459	2
NUT,FLANGED,5MM (Ref # 92015)	92015-1259	5
COLLAR,5X8X14.5 (Ref # 92027)	92027-1789	2
CLAMP,L=200 (Ref # 92037)	92037-1576	1
SPRING,BRAKE LAMP SWITCH (Ref # 92144)	92081-1990	1

# 1987 Concours PARTS LIST

Ignition Switch/Locks/Reflectors

ITEM NAME	PART NUMBER	QUANTITY
BOLT-UPSET-WP (Ref # 186)	186C0614	4
BOLT-UPSET-WP (Ref # 186A)	186C0616	1
WASHER-PLAIN,6MM (Ref # 411)	411E0600	2