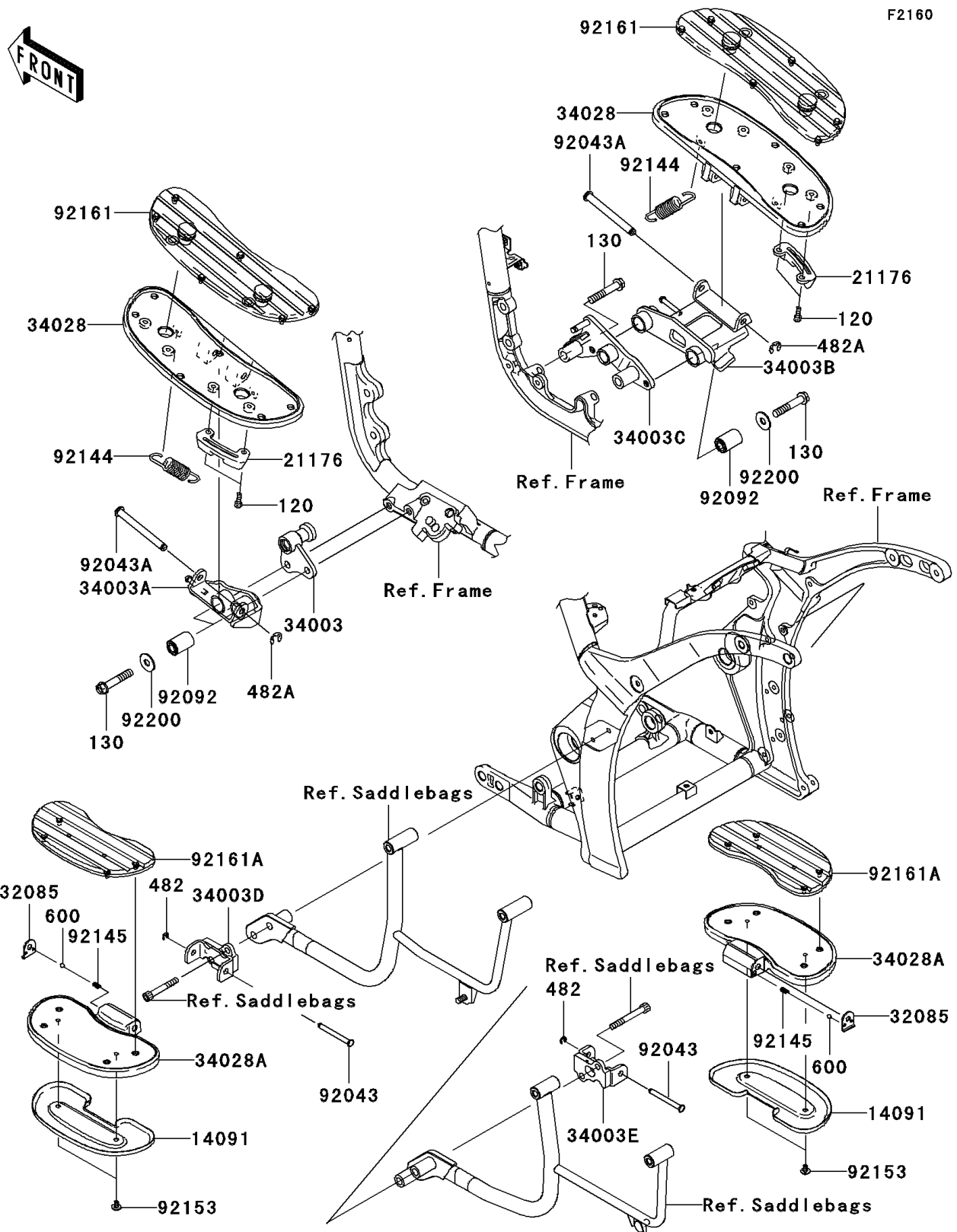


# 2008 Vulcan® 2000 Classic LT

## PARTS DIAGRAM

### Footrests



# 2008 Vulcan® 2000 Classic LT

## PARTS LIST

### Footrests

ITEM NAME	PART NUMBER	QUANTITY
BOLT-SOCKET,6X16 (Ref # 120)	120CB0616	4
BOLT-FLANGED,10X55 (Ref # 130)	130BB1055	6
CIRCLIP-TYPE-E (Ref # 482)	482EA7000	2
CIRCLIP-TYPE-E,8MM (Ref # 482A)	482EA8000	2
BALL-STEEL,1/4" (Ref # 600)	600A0800	2
COVER,REAR STEP (Ref # 14091)	14091-0229	2
SENSOR,BANK (Ref # 21176)	21176-0021	2
STOPPER,REAR STEP (Ref # 32085)	32085-0045	2
HOLDER-STEP,FR,LH,F.S.BLACK (Ref # 34003)	34003-0066-18R	1
HOLDER-STEP,FR,LH,F.S.BLACK (Ref # 34003A)	34003-0067-18R	1
HOLDER-STEP,FR,RH,F.S.BLACK (Ref # 34003B)	34003-0068-18R	1
HOLDER-STEP,FR,RH,F.S.BLACK (Ref # 34003C)	34003-0069-18R	1
HOLDER-STEP,RR,LH,F.S.BLACK (Ref # 34003D)	34003-0070-18R	1
HOLDER-STEP,RR,RH,F.S.BLACK (Ref # 34003E)	34003-0071-18R	1
STEP,FR (Ref # 34028)	34028-0011	2
STEP,RR (Ref # 34028A)	34028-0051	2
PIN,8X76.5 (Ref # 92043)	92043-0054	2
PIN,10X98.5 (Ref # 92043A)	92043-1707	2
BUSHING-RUBBER (Ref # 92092)	92092-0005	4
SPRING (Ref # 92144)	92144-1266	2
SPRING (Ref # 92145)	92145-1319	2
BOLT,SOCKET,6X10 (Ref # 92153)	92153-1096	4
DAMPER,FOOT BOARD (Ref # 92161)	92161-0126	2
DAMPER,REAR STEP (Ref # 92161A)	92161-0145	2
WASHER,10.3X28X2.3 (Ref # 92200)	92200-0113	4