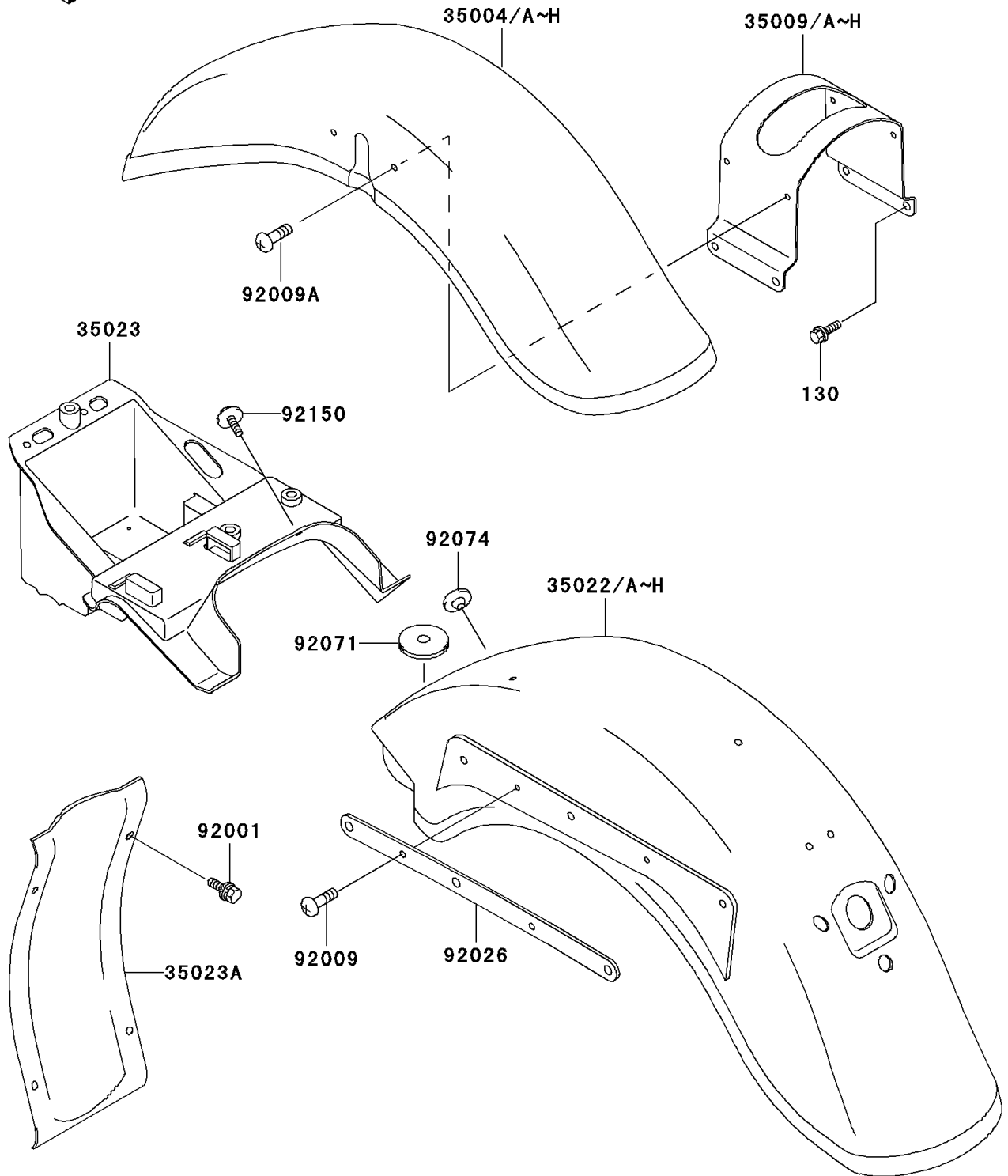


1996 Vulcan 800 Classic PARTS DIAGRAM

Fenders(VN800-B1/B2/B3)

F2170



1996 Vulcan 800 Classic PARTS LIST

Fenders(VN800-B1/B2/B3)

| ITEM NAME | PART NUMBER | QUANTITY |
|--|---------------|----------|
| FENDER-FRONT,S.RED (Ref # 35004A) | 35004-1335-H1 | 1 |
| BRACE,FRONT FENDER,S.RED (Ref # 35009A) | 35009-1111-H1 | 1 |
| FENDER-COMP-REAR,RR,S.RED (Ref # 35022A) | 35022-1319-H1 | 1 |
| BOLT-FLANGED,8X14 (Ref # 130) | 130J0814 | 4 |
| FENDER-REAR,FR (Ref # 35023) | 35023-1407 | 1 |
| FENDER-REAR (Ref # 35023A) | 35023-1417 | 1 |
| BOLT,6X20 (Ref # 92001) | 92001-1765 | 4 |
| SCREW,6X10 (Ref # 92009) | 92009-1402 | 4 |
| SCREW,6X12 (Ref # 92009A) | 92009-1744 | 4 |
| SPACER,RR FENDER (Ref # 92026) | 92026-1476 | 2 |
| GROMMET (Ref # 92071) | 92071-1228 | 2 |
| PLUG,7X2 (Ref # 92074) | 92074-028 | 1 |
| BOLT,6X14 (Ref # 92150) | 92150-1133 | 2 |
| FENDER-FRONT,EBONY (Ref # 35004C) | 35004-1335-H8 | 1 |
| FENDER-FRONT,D.T.GREEN (Ref # 35004F) | 35004-1335-1M | 1 |
| BRACE,FRONT FENDER,EBONY (Ref # 35009C) | 35009-1111-H8 | 1 |
| BRACE,FRONT FENDER,D.T.GREEN (Ref # 35009F) | 35009-1111-1M | 1 |
| FENDER-COMP-REAR,RR,EBONY (Ref # 35022C) | 35022-1319-H8 | 1 |
| FENDER-COMP-REAR,RR,D.T.GREEN (Ref # 35022F) | 35022-1319-1M | 1 |