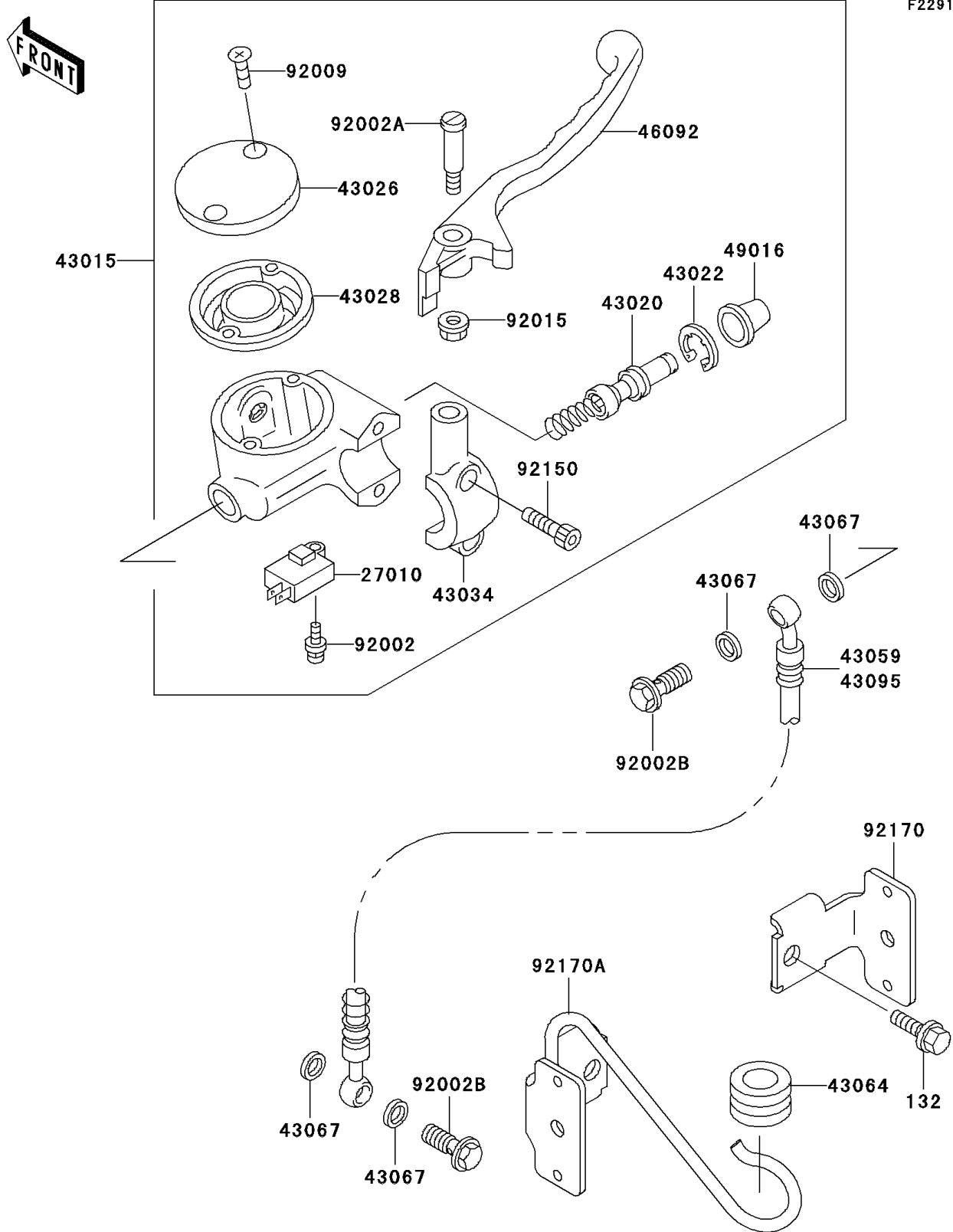


2003 Vulcan 800 PARTS DIAGRAM

Front Master Cylinder

F2291



2003 Vulcan 800 PARTS LIST

Front Master Cylinder

| ITEM NAME | PART NUMBER | QUANTITY |
|--|-------------|----------|
| BOLT-FLANGED-SMALL (Ref # 132) | 132E0610 | 2 |
| SWITCH,BRAKE (Ref # 27010) | 27010-1170 | 1 |
| CYLINDER-ASSY-MASTER,FR (Ref # 43015) | 43015-1511 | 1 |
| PISTON-COMP-BRAKE (Ref # 43020) | 43020-1098 | 1 |
| STOPPER-BRAKE,PISTON (Ref # 43022) | 43022-1010 | 1 |
| CAP-BRAKE,SILVER (Ref # 43026) | 43026-1078 | 1 |
| DIAPHRAGM,MASTER CYLINDER (Ref # 43028) | 43028-1071 | 1 |
| HOLDER-BRAKE,SILVER (Ref # 43034) | 43034-1102 | 1 |
| GROMMET,HOSE CLAMP (Ref # 43064) | 43064-006 | 1 |
| WASHER,10.5X15X1.5 (Ref # 43067) | 43067-001 | 4 |
| HOSE-BRAKE,FR (Ref # 43095) | 43095-1278 | 1 |
| LEVER-GRIP,FRONT BRAKE (Ref # 46092) | 46092-1172 | 1 |
| COVER-SEAL,MASTER CYLINDER (Ref # 49016) | 49016-1044 | 1 |
| BOLT,SCREW,4X12 (Ref # 92002) | 92002-1323 | 1 |
| BOLT,LEVER SET (Ref # 92002A) | 92002-1561 | 1 |
| BOLT,OIL,L=23 (Ref # 92002B) | 92002-1888 | 2 |
| SCREW,5MM (Ref # 92009) | 92009-1440 | 2 |
| NUT,FLANGED,6MM (Ref # 92015) | 92015-1528 | 1 |
| BOLT,SOCKET,6MM (Ref # 92150) | 92150-1025 | 2 |
| CLAMP,HOSE (Ref # 92170) | 92170-1554 | 1 |
| CLAMP,HOSE (Ref # 92170A) | 92170-1611 | 1 |