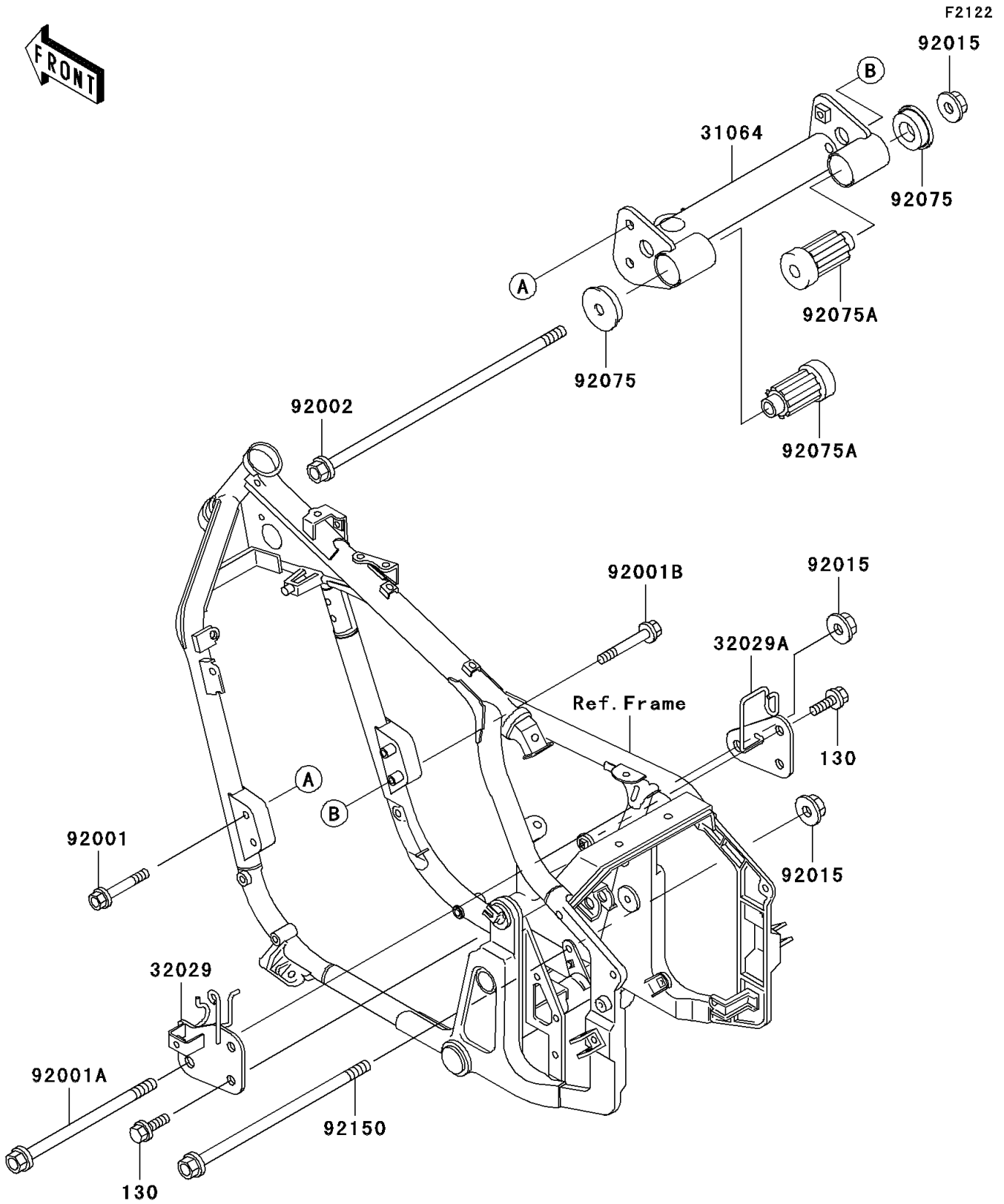


# 2001 Vulcan 800 PARTS DIAGRAM

Engine Mount



## 2001 Vulcan 800 PARTS LIST

### Engine Mount

| ITEM NAME                                | PART NUMBER | QUANTITY |
|------------------------------------------|-------------|----------|
| BOLT-FLANGED,8X16,BLACK (Ref # 130)      | 130J0816    | 4        |
| PIPE-COMP,ENGINE MOUNT,FR (Ref # 31064)  | 31064-1175  | 1        |
| BRACKET-ENGINE,RR,UPP,LH (Ref # 32029)   | 32029-1947  | 1        |
| BRACKET-ENGINE,RR,UPP,RH (Ref # 32029A)  | 32029-1948  | 1        |
| BOLT,FLANGED,8X50 (Ref # 92001)          | 92001-1614  | 2        |
| BOLT,FLANGED,10X155,BLACK (Ref # 92001A) | 92001-1620  | 1        |
| BOLT,FLANGED,8X55,BLACK (Ref # 92001B)   | 92001-1641  | 2        |
| BOLT,FLANGED,10X285 (Ref # 92002)        | 92002-1206  | 1        |
| NUT,FLANGED,10MM (Ref # 92015)           | 92015-1180  | 3        |
| DAMPER,ENGINE BRACKET (Ref # 92075)      | 92075-1738  | 2        |
| DAMPER,ENGINE MOUNT,MAIN (Ref # 92075A)  | 92075-1739  | 2        |
| BOLT,FLANGED,10X205 (Ref # 92150)        | 92150-1899  | 1        |