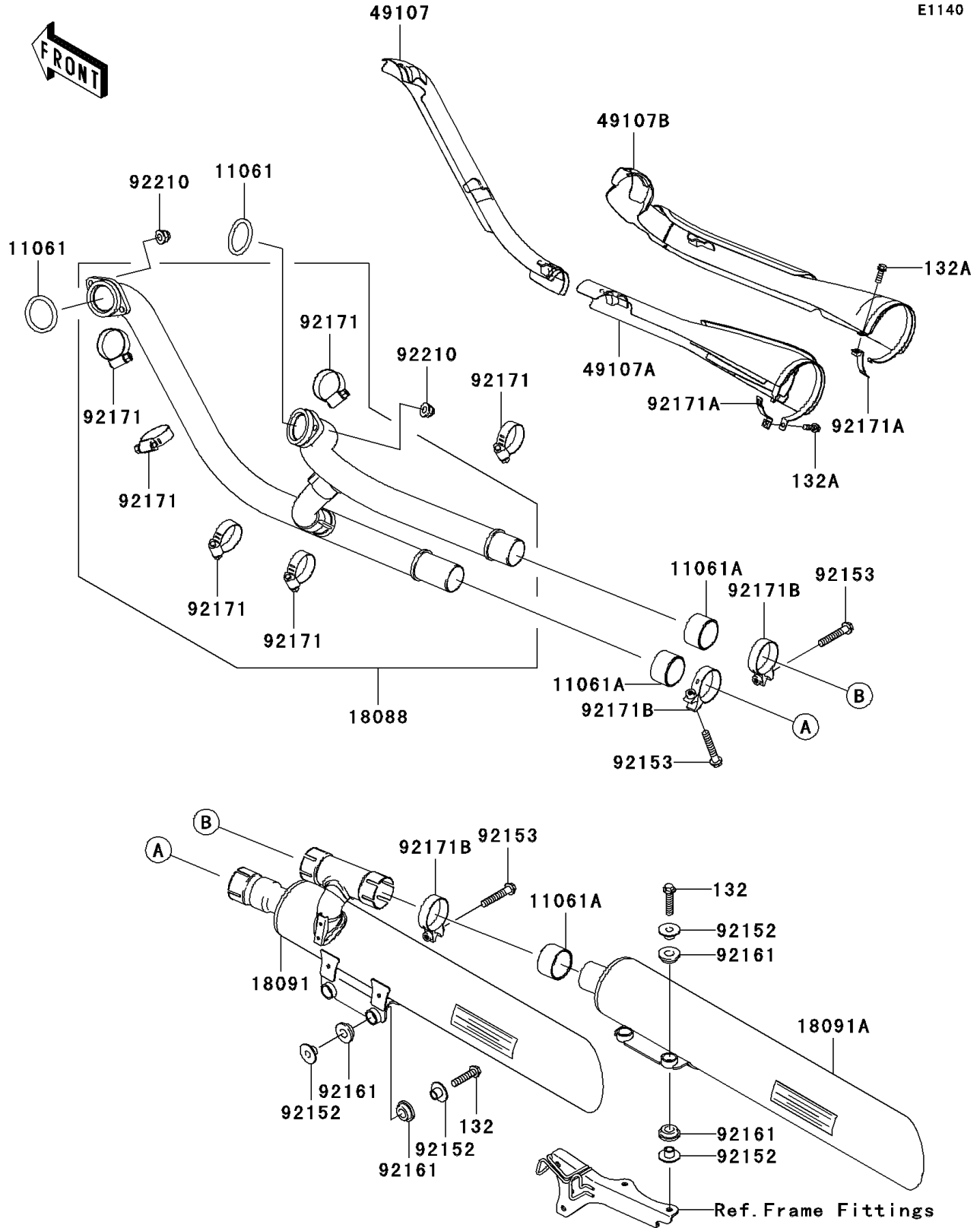


# 2009 Vulcan® 2000 Classic LT PARTS DIAGRAM

Muffler(s)

E1140



## 2009 Vulcan® 2000 Classic LT PARTS LIST

### Muffler(s)

ITEM NAME	PART NUMBER	QUANTITY
BOLT-FLANGED-SMALL,8X35 (Ref # 132)	132BB0835	4
BOLT-FLANGED-SMALL,6X20 (Ref # 132A)	132BC0620	2
GASKET,EXHAUST PIPE (Ref # 11061)	11061-0013	2
GASKET,MUFFLER CONNECTING (Ref # 11061A)	11061-0240	3
PIPE-EXHAUST (Ref # 18088)	18088-0452	1
BODY-COMP-MUFFLER,LWR (Ref # 18091)	18091-0527	1
BODY-COMP-MUFFLER,UPP (Ref # 18091A)	18091-0528	1
COVER-EXHAUST PIPE,FR,FR (Ref # 49107)	49107-0005	1
COVER-EXHAUST PIPE,FR,RR (Ref # 49107A)	49107-0033	1
COVER-EXHAUST PIPE,RR (Ref # 49107B)	49107-0048	1
COLLAR,8.8X12X10.6 (Ref # 92152)	92152-0082	8
BOLT,8X45 (Ref # 92153)	92153-0702	3
DAMPER (Ref # 92161)	92161-0135	8
CLAMP (Ref # 92171)	92171-0072	6
CLAMP (Ref # 92171A)	92171-0294	2
CLAMP (Ref # 92171B)	92171-0358	3
NUT,CAP,8MM (Ref # 92210)	92210-1132	4