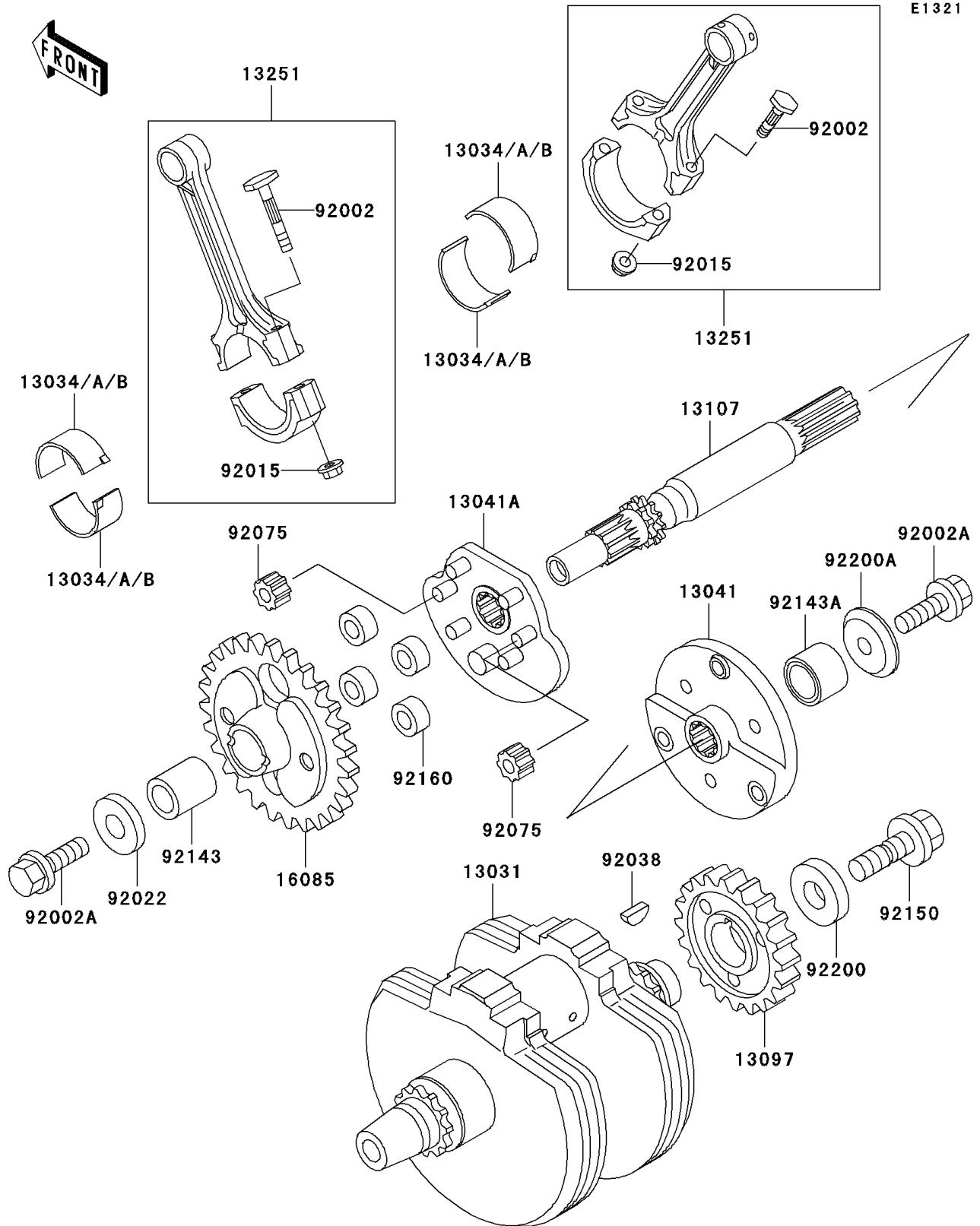


# 2003 Vulcan 800 PARTS DIAGRAM

Crankshaft



E1321

## 2003 Vulcan 800 PARTS LIST

### Crankshaft

| ITEM NAME                                 | PART NUMBER   | QUANTITY |
|---|---------------|----------|
| CRANKSHAFT-COMP (Ref # 13031)             | 13031-1398    | 1        |
| METAL,CONNECTING ROD,BLUE (Ref # 13034)   | 13034-1057    | AR       |
| METAL,CONNECTING ROD,BLACK (Ref # 13034A) | 13034-1058    | AR       |
| METAL,CONNECTING ROD,BROWN (Ref # 13034B) | 13034-1059    | AR       |
| BALANCER,RH (Ref # 13041)                 | 13041-1112    | 1        |
| BALANCER,LH (Ref # 13041A)                | 13041-1113    | 1        |
| GEAR-PRIMARY SPUR,38T (Ref # 13097)       | 13097-1335    | 1        |
| SHAFT,BALANCER (Ref # 13107)              | 13107-1336    | 1        |
| ROD-ASSY-CONNECTING,G (Ref # 13251)       | 13251-1055-GG | 2        |
| GEAR (Ref # 16085)                        | 16085-1279    | 1        |
| BOLT,CONNECTING ROD (Ref # 92002)         | 92002-1405    | 4        |
| BOLT,10X30 (Ref # 92002A)                 | 92002-1697    | 2        |
| NUT,CONNECTING ROD (Ref # 92015)          | 92015-1481    | 4        |
| WASHER,RH,10X33X9 (Ref # 92022)           | 92022-1906    | 1        |
| KEY (Ref # 92038)                         | 92038-1059    | 1        |
| DAMPER (Ref # 92075)                      | 92075-1748    | 2        |
| COLLAR (Ref # 92143)                      | 92143-1736    | 1        |
| COLLAR (Ref # 92143A)                     | 92143-1743    | 1        |
| BOLT,12X40 (Ref # 92150)                  | 92150-1717    | 1        |
| DAMPER (Ref # 92160)                      | 92160-1582    | 4        |
| WASHER (Ref # 92200)                      | 92200-1249    | 1        |
| WASHER (Ref # 92200A)                     | 92200-1250    | 1        |