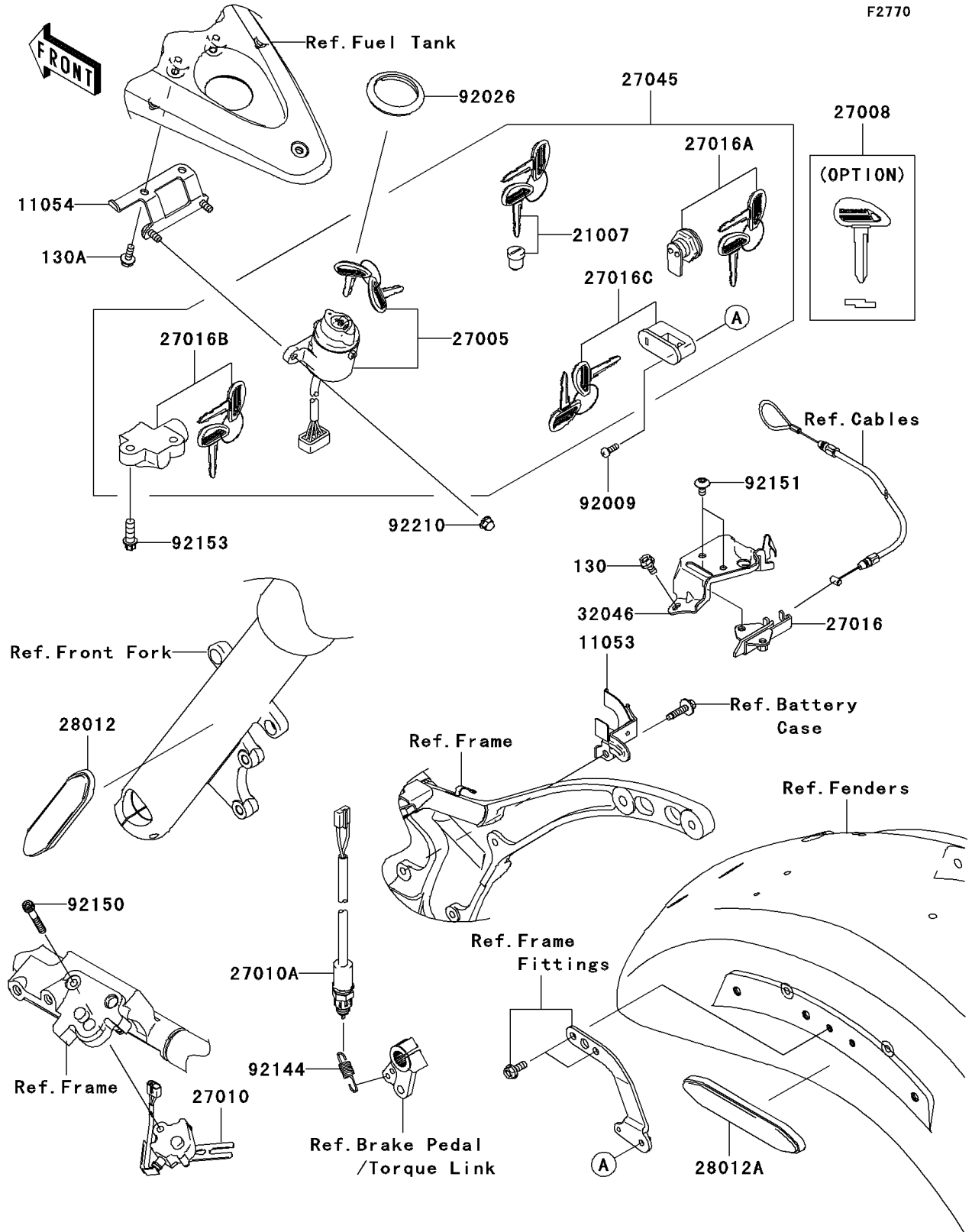


2009 Vulcan® 2000 Classic PARTS DIAGRAM

Ignition Switch/Locks/Reflectors



2009 Vulcan® 2000 Classic PARTS LIST

Ignition Switch/Locks/Reflectors

| ITEM NAME | PART NUMBER | QUANTITY |
|--|-------------|----------|
| BOLT-FLANGED,6X12 (Ref # 130) | 130BB0612 | 2 |
| BOLT-FLANGED,6X14 (Ref # 130A) | 130BB0614 | 2 |
| BRACKET,SIDE COVER LOCK (Ref # 11053) | 11053-0920 | 1 |
| BRACKET,IGNITION SWITCH (Ref # 11054) | 11054-0095 | 1 |
| ROTOR,LOCK,TANK CAP (Ref # 21007) | 21007-5053 | 1 |
| SWITCH-ASSY-IGNITION (Ref # 27005) | 27005-0027 | 1 |
| KEY-LOCK,BLANK (Ref # 27008) | 27008-1211 | 1 |
| SWITCH,SIDE STAND (Ref # 27010) | 27010-0011 | 1 |
| SWITCH,REAR BRAKE (Ref # 27010A) | 27010-0023 | 1 |
| LOCK-ASSY,SEAT STRIKER (Ref # 27016) | 27016-1115 | 1 |
| LOCK-ASSY,LID (Ref # 27016A) | 27016-5279 | 1 |
| LOCK-ASSY,STEERING (Ref # 27016B) | 27016-5298 | 1 |
| LOCK-ASSY,HELMET (Ref # 27016C) | 27016-5311 | 1 |
| SWITCH-ASSY (Ref # 27045) | 27045-5324 | 1 |
| REFLECTOR-REFLEX (Ref # 28012) | 28012-0009 | 2 |
| REFLECTOR-REFLEX (Ref # 28012A) | 28012-0010 | 2 |
| BRACKET-SEAT (Ref # 32046) | 32046-0037 | 1 |
| SCREW,5X14 (Ref # 92009) | 92009-1341 | 1 |
| SPACER,IGNITION SWITCH (Ref # 92026) | 92026-0018 | 1 |
| SPRING,REAR BRAKE SWITCH (Ref # 92144) | 92144-1141 | 1 |
| BOLT,SOCKET,6X40 (Ref # 92150) | 92150-1958 | 1 |
| BOLT,SOCKET,6X12 (Ref # 92151) | 92151-1219 | 2 |
| BOLT,TORX,8X22 (Ref # 92153) | 92153-1273 | 2 |
| NUT,CAP,6MM (Ref # 92210) | 92210-1252 | 2 |