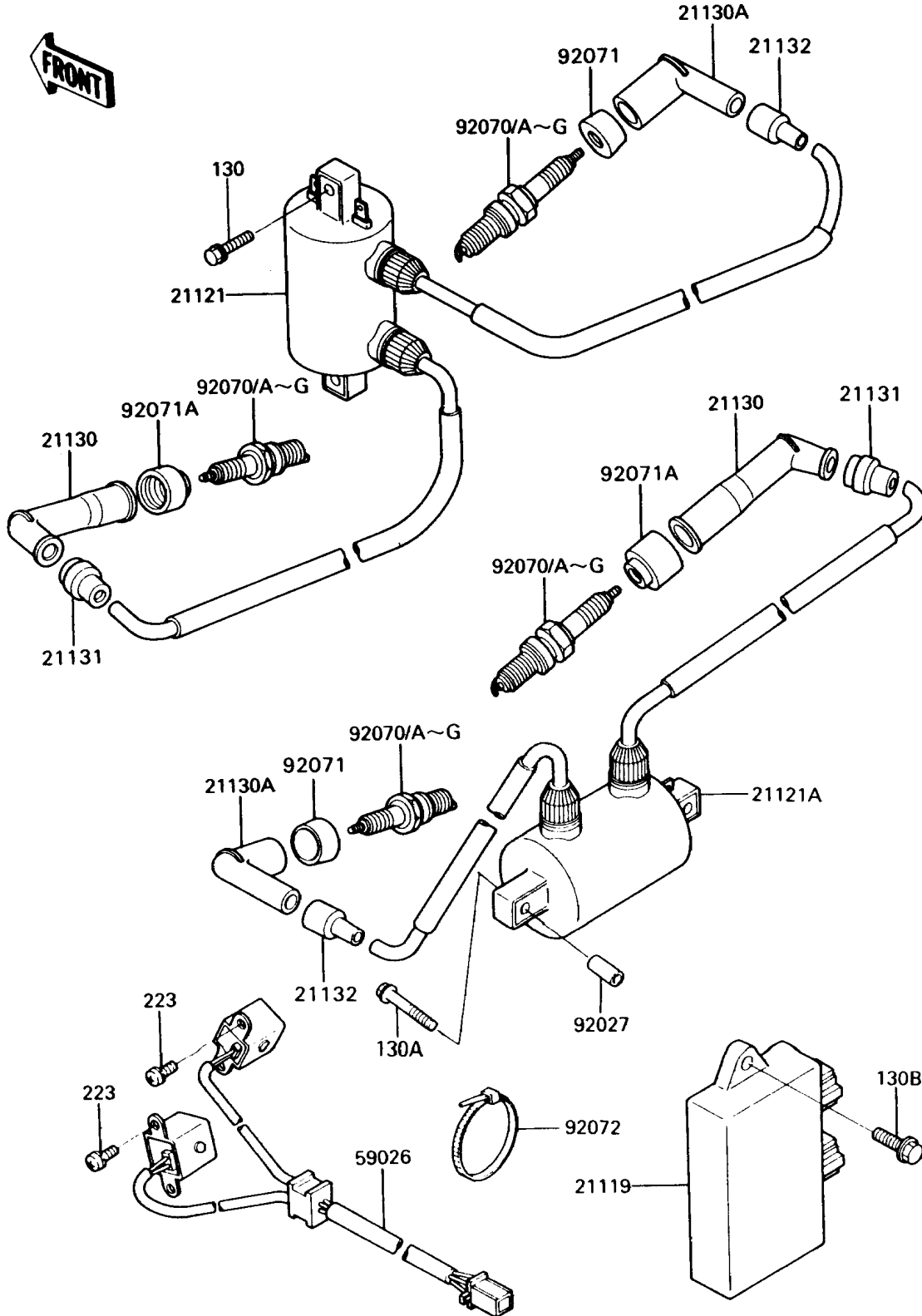


1990 Vulcan 750 PARTS DIAGRAM

Ignition Coil

E1830



1990 Vulcan 750 PARTS LIST

Ignition Coil

| ITEM NAME | PART NUMBER | QUANTITY |
|---|-------------|----------|
| BOLT-FLANGED (Ref # 130) | 130D0620 | 2 |
| BOLT-FLANGED (Ref # 130A) | 130D0640 | 2 |
| BOLT-FLANGED,6X14 (Ref # 130B) | 130G0614 | 2 |
| IGNITER (Ref # 21119) | 21119-1187 | 1 |
| COIL-IGNITION,FR (Ref # 21121) | 21121-1124 | 1 |
| COIL-IGNITION,RR (Ref # 21121A) | 21121-1125 | 1 |
| CAP-SPARK PLUG (Ref # 21130) | 21130-1002 | 2 |
| CAP-SPARK PLUG (Ref # 21130A) | 21130-1003 | 2 |
| GROMMET,HIGH TENSION (Ref # 21131) | 21131-005 | 2 |
| GROMMET,HIGH TENSION (Ref # 21132) | 21132-005 | 2 |
| COIL-PULSING (Ref # 59026) | 59026-1062 | 1 |
| COLLAR,6.8X10X20 (Ref # 92027) | 92027-1856 | 2 |
| PLUG-SPARK,X24EP-U9(ND) (Ref # 92070C) | | 4 |
| PLUG-SPARK,X22EP-U9(ND) (Ref # 92070D) | | 4 |
| PLUG-SPARK,X22EPR-U9(ND) (Ref # 92070E) | | 4 |
| GROMMET,SPARK PLUG CAP (Ref # 92071) | 92071-1015 | 2 |
| GROMMET,PLUG CAP (Ref # 92071A) | 92071-1124 | 2 |
| BAND,LEAD WIRE (Ref # 92072) | 92072-1181 | 1 |
| SCREW-PAN-WS-CROS (Ref # 223) | 223B0512 | 4 |
| PLUG-SPARK,DPR8EA-9(NGK) (Ref # 92070) | 92070-1065 | 4 |
| PLUG-SPARK,DP8EA-9(NGK) (Ref # 92070A) | 92070-1066 | 4 |
| PLUG-SPARK,X24EPR-U9(ND) (Ref # 92070B) | | 4 |
| PLUG-SPARK,DP7EA9(NGK) (Ref # 92070F) | 92070-1124 | 4 |
| PLUG-SPARK,DPR7EA9(NGK) (Ref # 92070G) | 92070-1125 | 4 |