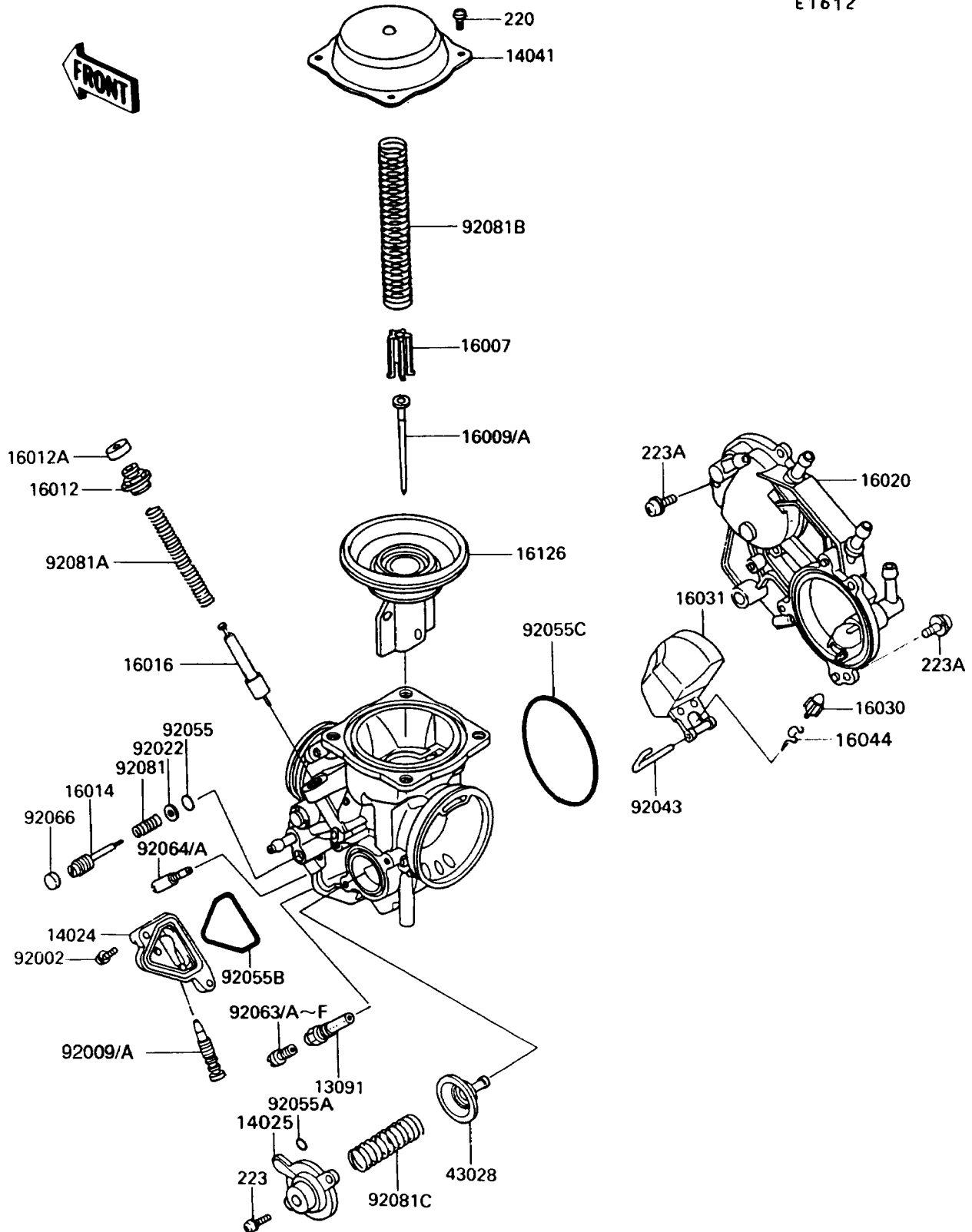


1990 Vulcan 750 PARTS DIAGRAM

Carburetor Parts

E1612



1990 Vulcan 750 PARTS LIST

Carburetor Parts

| ITEM NAME | PART NUMBER | QUANTITY |
|--|-------------|----------|
| HOLDER,NEEDLE JET (Ref # 13091) | 13091-1384 | 2 |
| COVER,DRAIN (Ref # 14024) | 14024-1094 | 2 |
| COVER,AIR CUT VALVE (Ref # 14025) | 14025-1903 | 2 |
| COVER-COMP,MIXING,INSIDE (Ref # 14041) | 14041-1061 | 2 |
| SEAT-SPRING,VALVE (Ref # 16007) | 16007-1117 | 2 |
| NEEDLE-JET,N53A,FR (Ref # 16009) | 16009-1327 | 1 |
| NEEDLE-JET,N53B,RR (Ref # 16009A) | 16009-1328 | 1 |
| CAP-STARTER PLUNGER (Ref # 16012) | 16012-1051 | 2 |
| CAP-STARTER PLUNGER (Ref # 16012A) | 16012-1052 | 2 |
| SCREW-PILOT AIR (Ref # 16014) | 16014-1054 | 2 |
| PLUNGER,STARTER (Ref # 16016) | 16016-1066 | 2 |
| CHAMBER-FLOAT,COMP (Ref # 16020) | 16020-1051 | 1 |
| VALVE-FLOAT (Ref # 16030) | 16030-1057 | 2 |
| FLOAT (Ref # 16031) | 16031-1059 | 2 |
| CLAMP,FLOAT VALVE (Ref # 16044) | 16044-007 | 2 |
| VALVE,VACUUM,60PS (Ref # 16126) | 16126-1173 | 2 |
| DIAPHRAGM,AIR CUT VALVE (Ref # 43028) | 43028-1053 | 2 |
| BOLT,4X14 (Ref # 92002) | 92002-1761 | 4 |
| SCREW,DRAIN,M6X1.0 (Ref # 92009) | 92009-1434 | 2 |
| WASHER,PLAIN (Ref # 92022) | 92022-1003 | 2 |
| PIN,FLOAT (Ref # 92043) | 92043-1285 | 2 |
| RING-O,PILOT ADJUST (Ref # 92055) | 92055-1002 | 2 |
| RING-O (Ref # 92055A) | 92055-1245 | 2 |
| RING-O (Ref # 92055B) | 92055-1290 | 2 |
| RING-O (Ref # 92055C) | 92055-1291 | 2 |
| JET-MAIN,#135 (Ref # 92063) | 92063-1014 | 2 |
| JET-MAIN,#138 (Ref # 92063A) | 92063-1015 | 2 |
| JET-MAIN,2ND,#125 (Ref # 92063B) | 92063-1069 | 2 |
| JET-MAIN,2ND,#122 (Ref # 92063C) | 92063-1073 | 2 |

1990 Vulcan 750 PARTS LIST

Carburetor Parts

| ITEM NAME | PART NUMBER | QUANTITY |
|--|-------------|----------|
| JET-MAIN,2ND,#128 (Ref # 92063D) | 92063-1074 | 2 |
| JET-MAIN,#130 (Ref # 92063E) | 92063-1075 | 2 |
| JET-MAIN,#132 (Ref # 92063F) | 92063-1076 | 2 |
| JET-PILOT,#38 (Ref # 92064) | 92064-1118 | 2 |
| JET-PILOT,#35 (Ref # 92064A) | 92064-1123 | 2 |
| SCREW-PAN-CROS (Ref # 220) | 220D0408 | 8 |
| SCREW-PAN-WS-CROS (Ref # 223) | 223D0410 | 4 |
| SCREW-PAN-WS-CROS (Ref # 223A) | 223D0512 | 6 |
| PLUG,PILOT AIR SCREW,6.9X2 (Ref # 92066) | 92066-1051 | 2 |
| SPRING,PILOT ADJUST SCREW (Ref # 92081) | 92081-1002 | 2 |
| SPRING,STARTER PLUNGER (Ref # 92081A) | 92081-1761 | 2 |
| SPRING,VACUUM VALVE (Ref # 92081B) | 92081-1874 | 2 |
| SPRING,AIR CUT VALVE (Ref # 92081C) | 92081-1891 | 2 |
| SCREW,DRAIN,M6X0.75 (Ref # 92009A) | 92009-1551 | 2 |