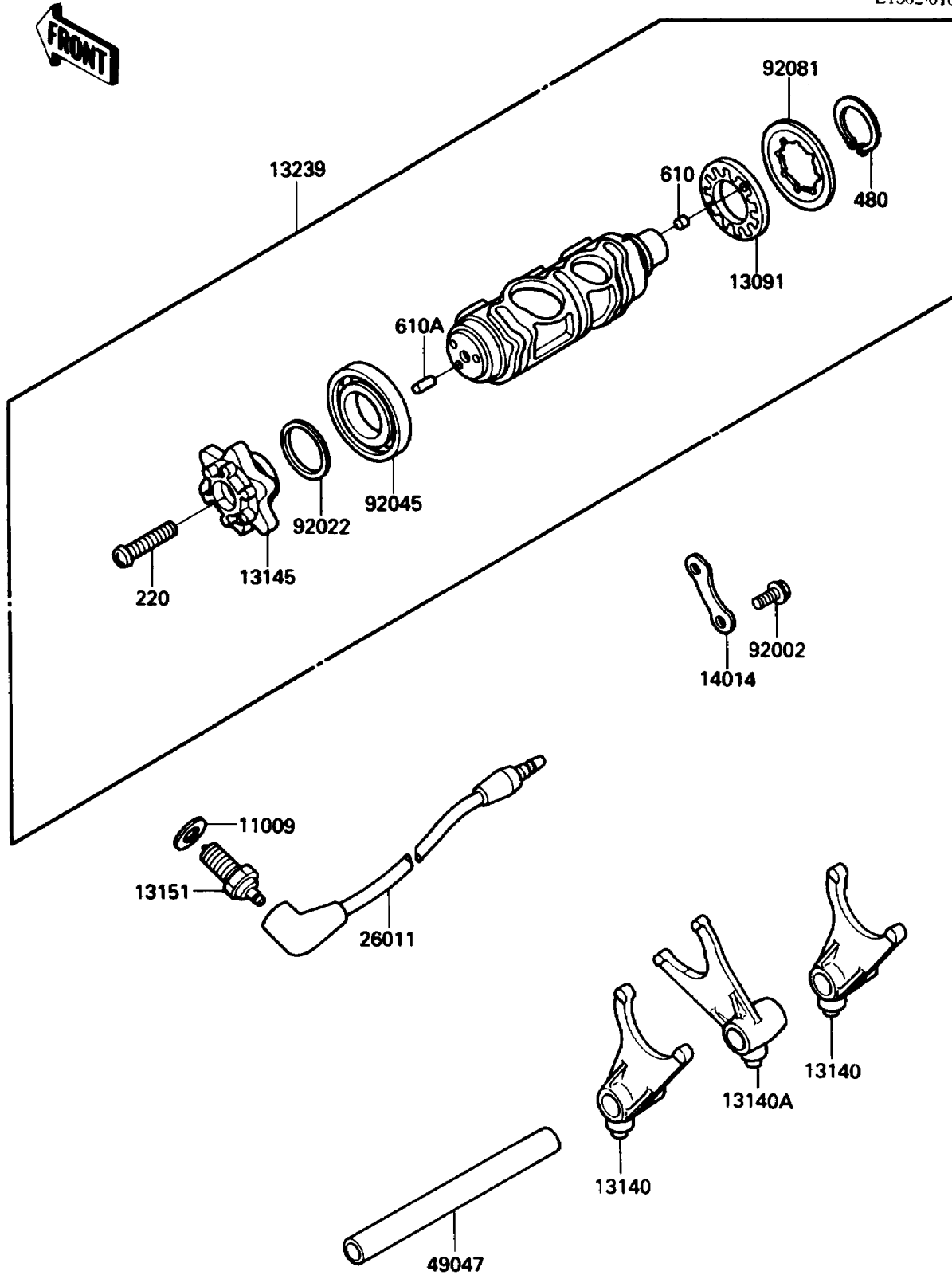


# 1988 Vulcan 750 PARTS DIAGRAM

Gear Change Drum/Shift Fork(s)

E1362-0101



# 1988 Vulcan 750 PARTS LIST

## Gear Change Drum/Shift Fork(s)

| ITEM NAME                                 | PART NUMBER | QUANTITY |
|---|-------------|----------|
| GASKET,10.5X16X1,DRAIN PLUG (Ref # 11009) | 92065-058   | 1        |
| HOLDER,CHANGE DRUM (Ref # 13091)          | 13091-1389  | 1        |
| FORK-SHIFT (Ref # 13140)                  | 13140-1126  | 2        |
| FORK-SHIFT (Ref # 13140A)                 | 13140-1138  | 1        |
| CAM-CHANGE DRUM (Ref # 13145)             | 13145-1051  | 1        |
| SWITCH-COMP,NEUTRAL (Ref # 13151)         | 13151-1008  | 1        |
| DRUM-ASSY-CHANGE (Ref # 13239)            | 13239-1126  | 1        |
| PLATE-POSITION (Ref # 14014)              | 14014-1014  | 1        |
| WIRE-LEAD (Ref # 26011)                   | 26011-1294  | 1        |
| ROD-SHIFT (Ref # 49047)                   | 49047-1059  | 1        |
| BOLT,6X12 (Ref # 92002)                   | 92002-1563  | 2        |
| WASHER,25.3X30X1 (Ref # 92022)            | 92022-161   | 1        |
| BEARING-BALL,16005Z (Ref # 92045)         | 92045-1030  | 1        |
| SPRING (Ref # 92081)                      | 92081-1895  | 1        |
| SCREW-PAN-CROS,6X30 (Ref # 220)           | 220B0630    | 1        |
| CIRCLIP-TYPE-C,22MM (Ref # 480)           | 480J2200    | 1        |
| ROLLER,4X4 (Ref # 610)                    | 610A0404    | 1        |
| ROLLER,4X10 (Ref # 610A)                  | 610A0410    | 1        |