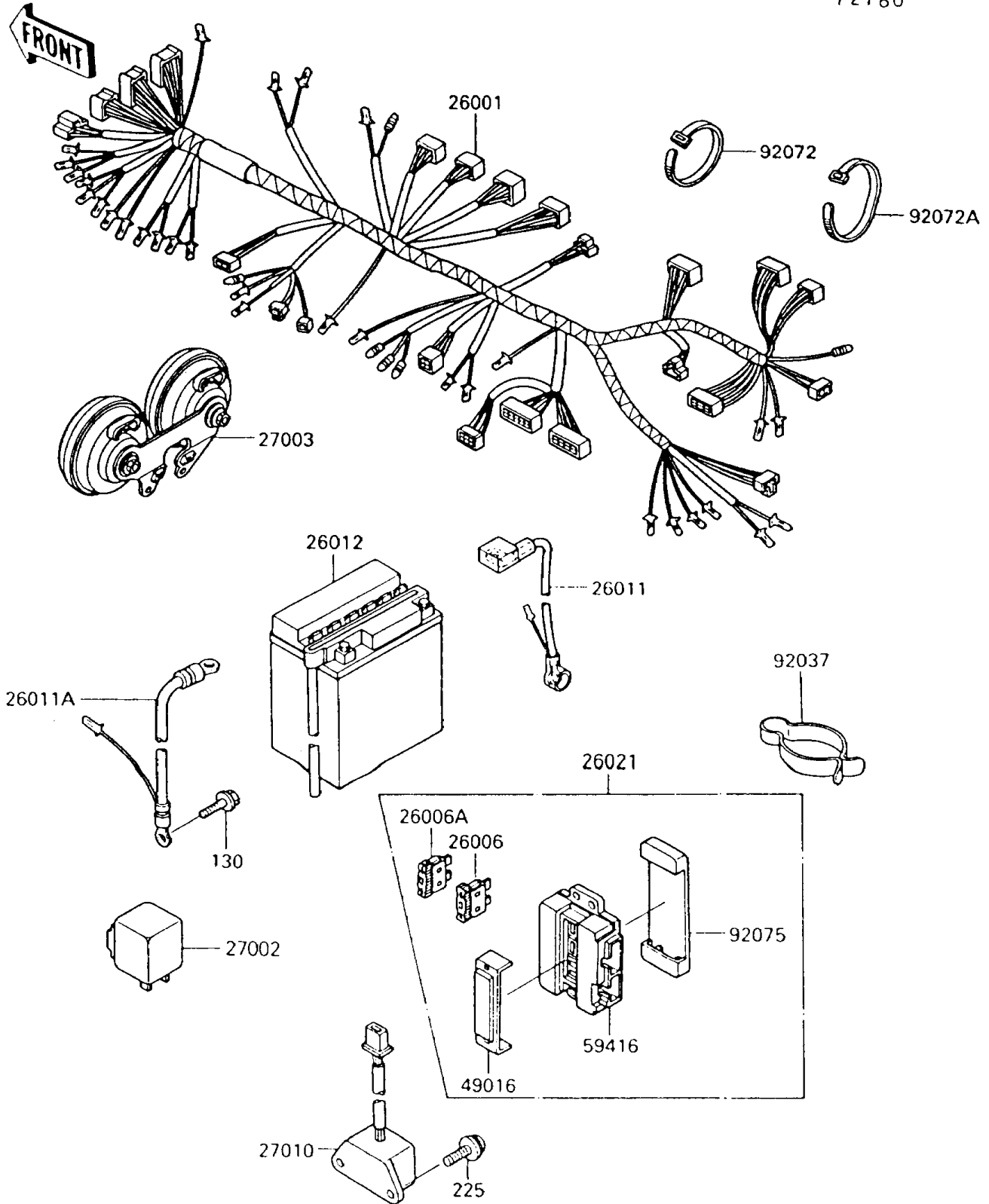


1998 Vulcan 750 PARTS DIAGRAM

Chassis Electrical Equipment

F2760



1998 Vulcan 750 PARTS LIST

Chassis Electrical Equipment

| ITEM NAME | PART NUMBER | QUANTITY |
|--|-------------|----------|
| BOLT-FLANGED,6X10 (Ref # 130) | 130V0610 | 1 |
| SCREW-PAN-WSP-CROS (Ref # 225) | 225B0620 | 2 |
| HARNESS,MAIN (Ref # 26001) | 26001-1961 | 1 |
| FUSE,30A-G (Ref # 26006) | 26006-1067 | 2 |
| FUSE,10A-R (Ref # 26006A) | 26006-1068 | 4 |
| WIRE-LEAD,BATTERY(+) (Ref # 26011) | 26011-1310 | 1 |
| WIRE-LEAD,BATTERY(-) (Ref # 26011A) | 26011-1549 | 1 |
| BATTERY,12V 14AH,YB14L-A2 (Ref # 26012) | 26012-1238 | 1 |
| JUNCTION BOX (Ref # 26021) | 26021-1073 | 1 |
| RELAY-ASSY,TURN SIGNAL (Ref # 27002) | 27002-1060 | 1 |
| HORN,DOUBLE (Ref # 27003) | 27003-1218 | 1 |
| SWITCH,RESERVE LIGHTING (Ref # 27010) | 27010-1069 | 1 |
| COVER-SEAL,FUSE (Ref # 49016) | 49016-1106 | 1 |
| CASE-ELECTRIC,FUSE & RELAY BOX (Ref # 59416) | 59416-1052 | 1 |
| CLAMP,CABLE (Ref # 92037) | 92037-093 | 1 |
| BAND,L=149 (Ref # 92072) | 92072-031 | 4 |
| BAND,L=186 (Ref # 92072A) | 92072-056 | 7 |
| DAMPER,JUNCTION BOX (Ref # 92075) | 92075-1688 | 1 |