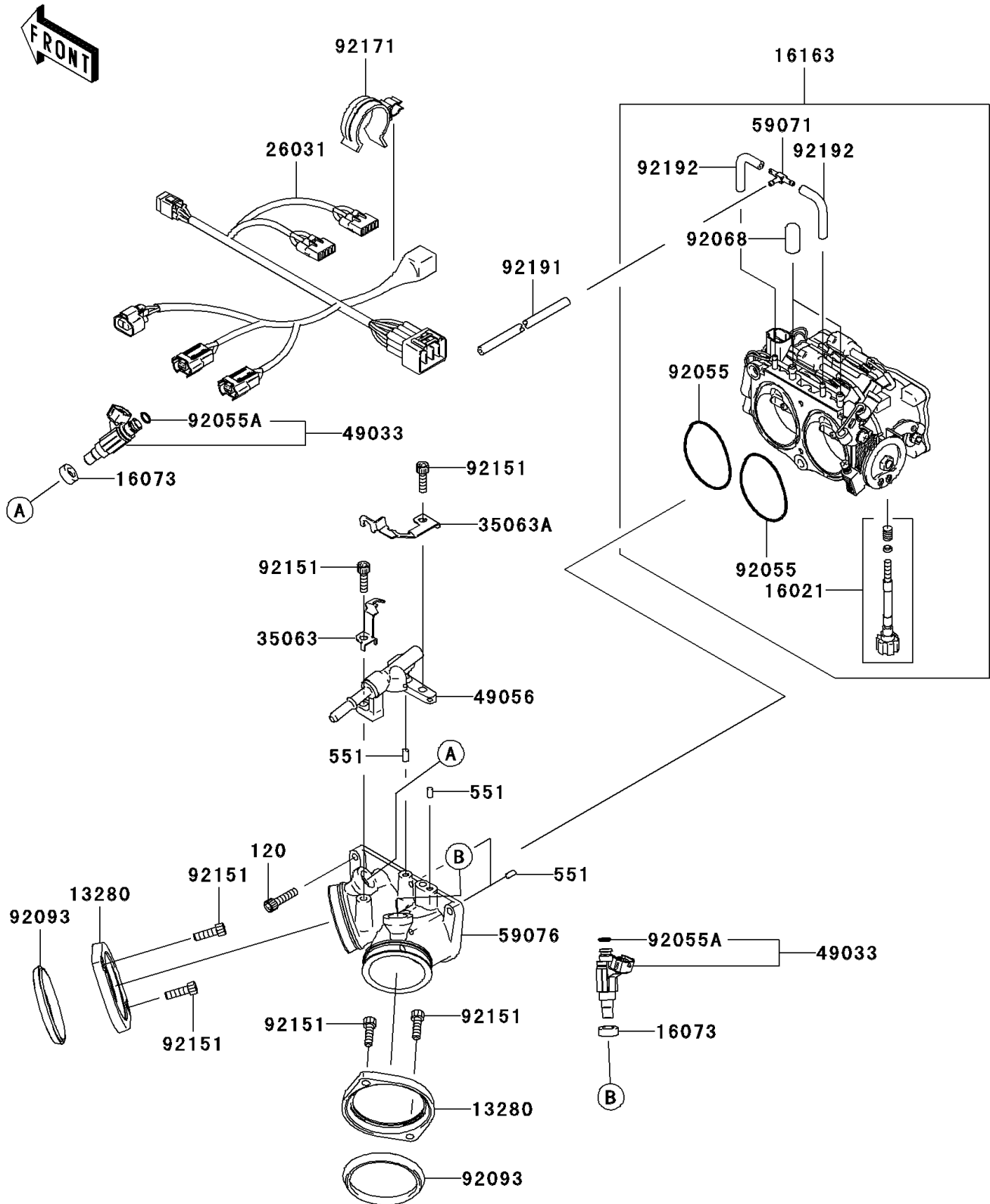


## 2007 Vulcan 2000 Classic LT PARTS DIAGRAM

Throttle

E1510



## 2007 Vulcan 2000 Classic LT PARTS LIST

### Throttle

| ITEM NAME                              | PART NUMBER | QUANTITY |
|--|-------------|----------|
| BOLT-SOCKET,6X25 (Ref # 120)           | 120W0625    | 1        |
| PIN-DOWEL (Ref # 551)                  | 551R0408    | 1        |
| HOLDER,INTAKE MANIFOLD (Ref # 13280)   | 13280-0007  | 1        |
| SCREW-THROTTLE STOP (Ref # 16021)      | 16021-0006  | 1        |
| INSULATOR (Ref # 16073)                | 16073-3707  | 1        |
| THROTTLE-ASSY (Ref # 16163)            | 16163-0001  | 1        |
| HARNESS (Ref # 26031)                  | 26031-0179  | 1        |
| STAY (Ref # 35063)                     | 35063-0075  | 1        |
| STAY (Ref # 35063A)                    | 35063-0076  | 1        |
| NOZZLE-INJECTION (Ref # 49033)         | 49033-0003  | 1        |
| PIPE-INJECTION (Ref # 49056)           | 49056-0004  | 1        |
| JOINT,3WAY,T (Ref # 59071)             | 59071-3752  | 1        |
| MANIFOLD-INTAKE (Ref # 59076)          | 59076-0001  | 1        |
| RING-O (Ref # 92055)                   | 92055-0056  | 1        |
| RING-O,INJECTION NOZZLE (Ref # 92055A) | 92055-1622  | 1        |
| PLUG,12X25 (Ref # 92068)               | 92068-006   | 1        |
| SEAL (Ref # 92093)                     | 92093-0006  | 1        |
| BOLT,SOCKET,6X20 (Ref # 92151)         | 92151-3774  | 1        |
| CLAMP (Ref # 92171)                    | 92171-0130  | 1        |
| TUBE,3X7X300 (Ref # 92191)             | 92191-0032  | 1        |
| TUBE (Ref # 92192)                     | 92192-0106  | 1        |