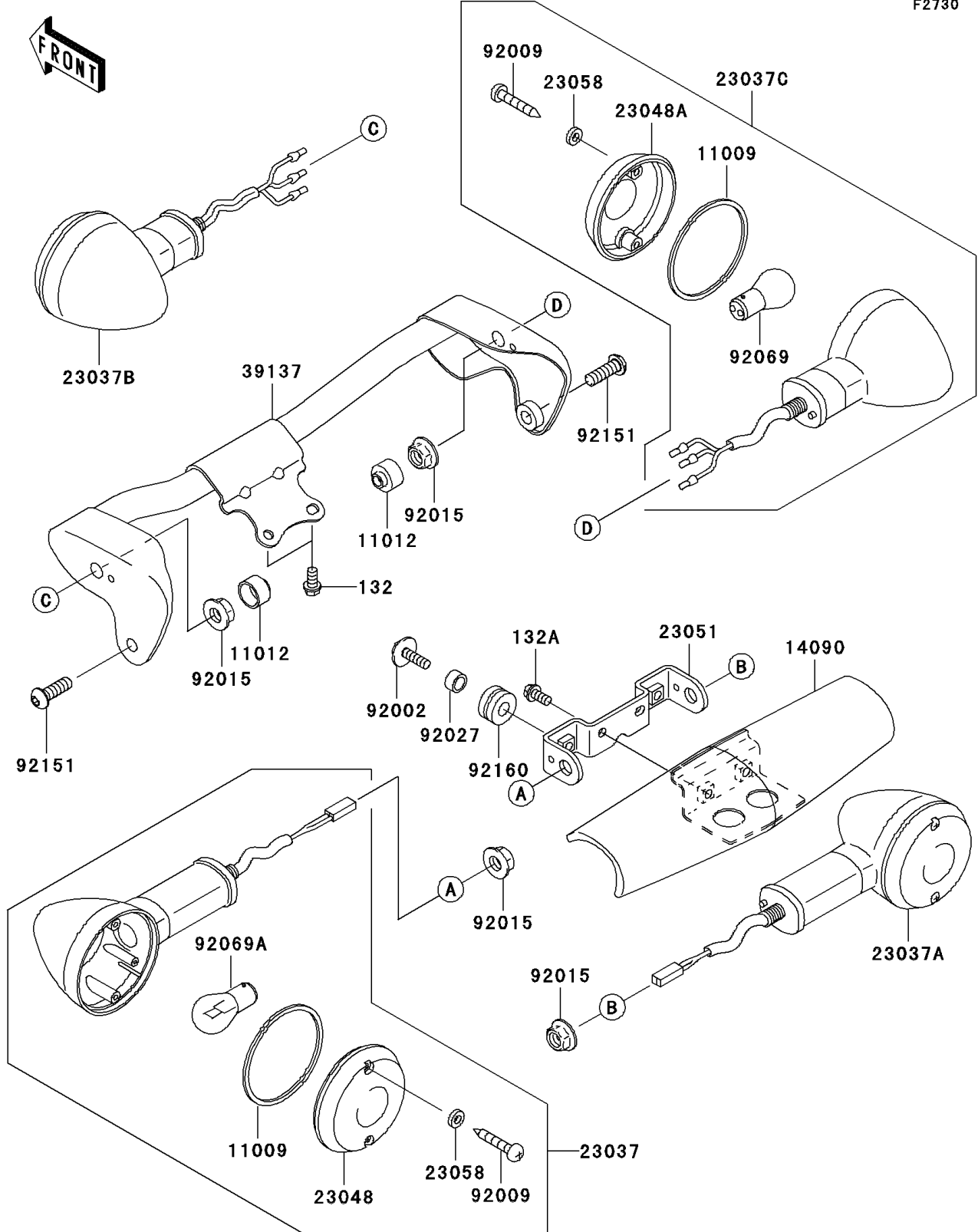


2006 Vulcan 1500 Classic PARTS DIAGRAM

Turn Signals

F2730



2006 Vulcan 1500 Classic PARTS LIST

Turn Signals

| ITEM NAME | PART NUMBER | QUANTITY |
|--|-------------|----------|
| BOLT-FLANGED-SMALL,6X12 (Ref # 132) | 132E0612 | 2 |
| BOLT-FLANGED-SMALL,6X12 (Ref # 132A) | 132J0612 | 2 |
| GASKET,SIGNAL LAMP (Ref # 11009) | 11009-1413 | 4 |
| CAP (Ref # 11012) | 11012-1367 | 2 |
| COVER (Ref # 14090) | 14090-1691 | 1 |
| LAMP-ASSY-SIGNAL,RR,LH (Ref # 23037) | 23037-1388 | 1 |
| LAMP-ASSY-SIGNAL,RR,RH (Ref # 23037A) | 23037-1389 | 1 |
| LAMP-ASSY-SIGNAL,FR,LH (Ref # 23037B) | 23037-1426 | 1 |
| LAMP-ASSY-SIGNAL,FR,RH (Ref # 23037C) | 23037-1427 | 1 |
| LENS-SIGNAL LAMP (Ref # 23048) | 23048-1065 | 2 |
| LENS-SIGNAL LAMP (Ref # 23048A) | 23048-1066 | 2 |
| BRACKET-SIGNAL LAMP,RR (Ref # 23051) | 23051-1230 | 1 |
| WASHER,PLAIN,4MM (Ref # 23058) | 23058-002 | 8 |
| STAY-COMP,SIGNAL LAMP,FR (Ref # 39137) | 39137-1077 | 1 |
| BOLT,UPSET-WP,6X22 (Ref # 92002) | 92002-1262 | 2 |
| SCREW,TAPPING,4X25 (Ref # 92009) | 92009-1637 | 8 |
| NUT,10MM (Ref # 92015) | 92015-1356 | 4 |
| COLLAR,6.8X10X12 (Ref # 92027) | 92027-162 | 2 |
| BULB,12V 21/5W (Ref # 92069) | 92069-063 | 2 |
| BULB,12V 21W (Ref # 92069A) | | 2 |
| BOLT,SOCKET,8X25 (Ref # 92151) | 92151-1327 | 2 |
| DAMPER (Ref # 92160) | 92160-1162 | 2 |