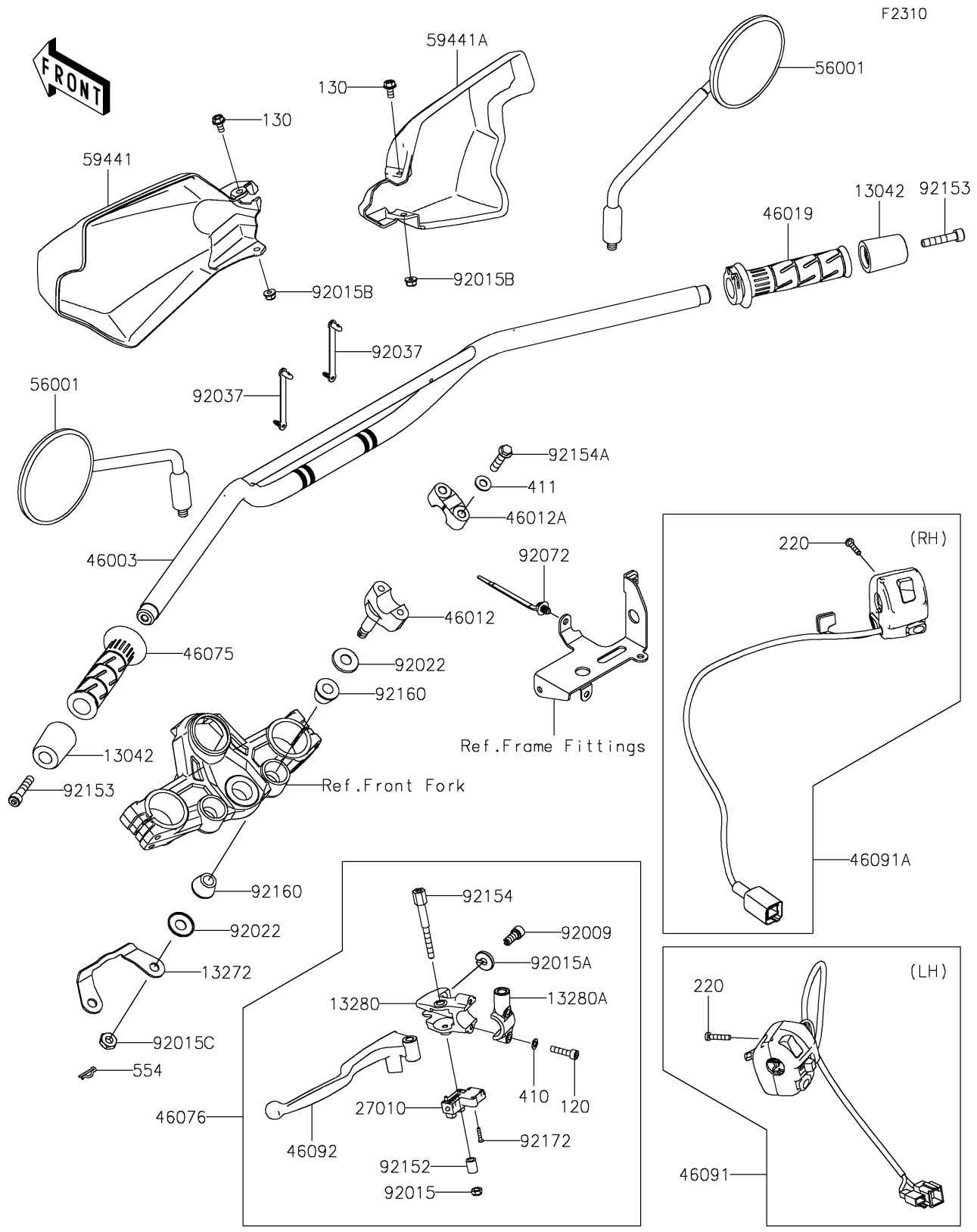


# 2023 KLR® 650 Traveler ABS PARTS DIAGRAM

## Handlebar



## 2023 KLR® 650 Traveler ABS PARTS LIST

### Handlebar

ITEM NAME	PART NUMBER	QUANTITY
WEIGHT,HANDLE (Ref # 13042)	13042-5007	2
PLATE,STABILIZER (Ref # 13272)	13272-3799	1
HOLDER,LEVER (Ref # 13280)	13280-0929	1
HOLDER,MIRROR (Ref # 13280A)	13280-0930	1
SWITCH,CLUTCH (Ref # 27010)	27010-0729	1
HANDLE (Ref # 46003)	46003-0793	1
HOLDER-HANDLE,LWR,F.S.BLACK (Ref # 46012)	46012-0075-18R	2
HOLDER-HANDLE,UPP,F.S.BLACK (Ref # 46012A)	46012-0380-18R	2
GRIP-ASSY,THROTTLE (Ref # 46019)	46019-0060	1
GRIP,HANDLE,LH (Ref # 46075)	46075-0564	1
LEVER-ASSY-GRIP (Ref # 46076)	46076-0183	1
HOUSING-ASSY-CONTROL,LH (Ref # 46091)	46091-0552	1
HOUSING-ASSY-CONTROL,RH (Ref # 46091A)	46091-0553	1
LEVER-GRIP,CLUTCH (Ref # 46092)	46092-0583	1
MIRROR-ASSY (Ref # 56001)	56001-0444	2
COVER-HANDLE,LH,EBONY (Ref # 59441)	59441-0304-68L	1
COVER-HANDLE,RH,EBONY (Ref # 59441A)	59441-0307-68L	1
SCREW,CABLE ADJUST,8MM,BLACK (Ref # 92009)	92009-1134	1
NUT,LOCK,6MM,BLACK (Ref # 92015)	92015-1191	1
NUT,CABLE ADJUST LOCK,8MM,BLK (Ref # 92015A)	92015-1197	1
NUT,LOCK,FLANGED,6MM (Ref # 92015B)	92015-1603	2
NUT,LOCK,10MM (Ref # 92015C)	92015-1962	2
WASHER (Ref # 92022)	92022-1737	4
CLAMP,SPEED,L=58 (Ref # 92037)	92037-1163	2
BAND,OS170-FT7(BLACK) (Ref # 92072)	92072-1414	1
COLLAR,6.5X10.5X14 (Ref # 92152)	92152-2848	1
BOLT,SOCKET,8X40 (Ref # 92153)	92153-1901	2
BOLT (Ref # 92154)	92154-2359	1
BOLT,FLANGED,8X35 (Ref # 92154A)	92154-3964	4

## 2023 KLR® 650 Traveler ABS PARTS LIST

### Handlebar

ITEM NAME	PART NUMBER	QUANTITY
DAMPER,HANDLE HOLDER (Ref # 92160)	92160-1544	4
SCREW,3X16 (Ref # 92172)	92172-0183	2
BOLT-SOCKET,6X25 (Ref # 120)	120CB0625	2
BOLT-FLANGED,6X12 (Ref # 130)	130BB0612	2
SCREW-PAN-CROS,5X25 (Ref # 220)	220AB0525	4
WASHER-PLAIN-SMALL,6MM (Ref # 410)	410AB0600	2
WASHER-PLAIN,8.5X18X1.6 (Ref # 411)	411AB0800	4
PIN-SNAP (Ref # 554)	554DA0800	2