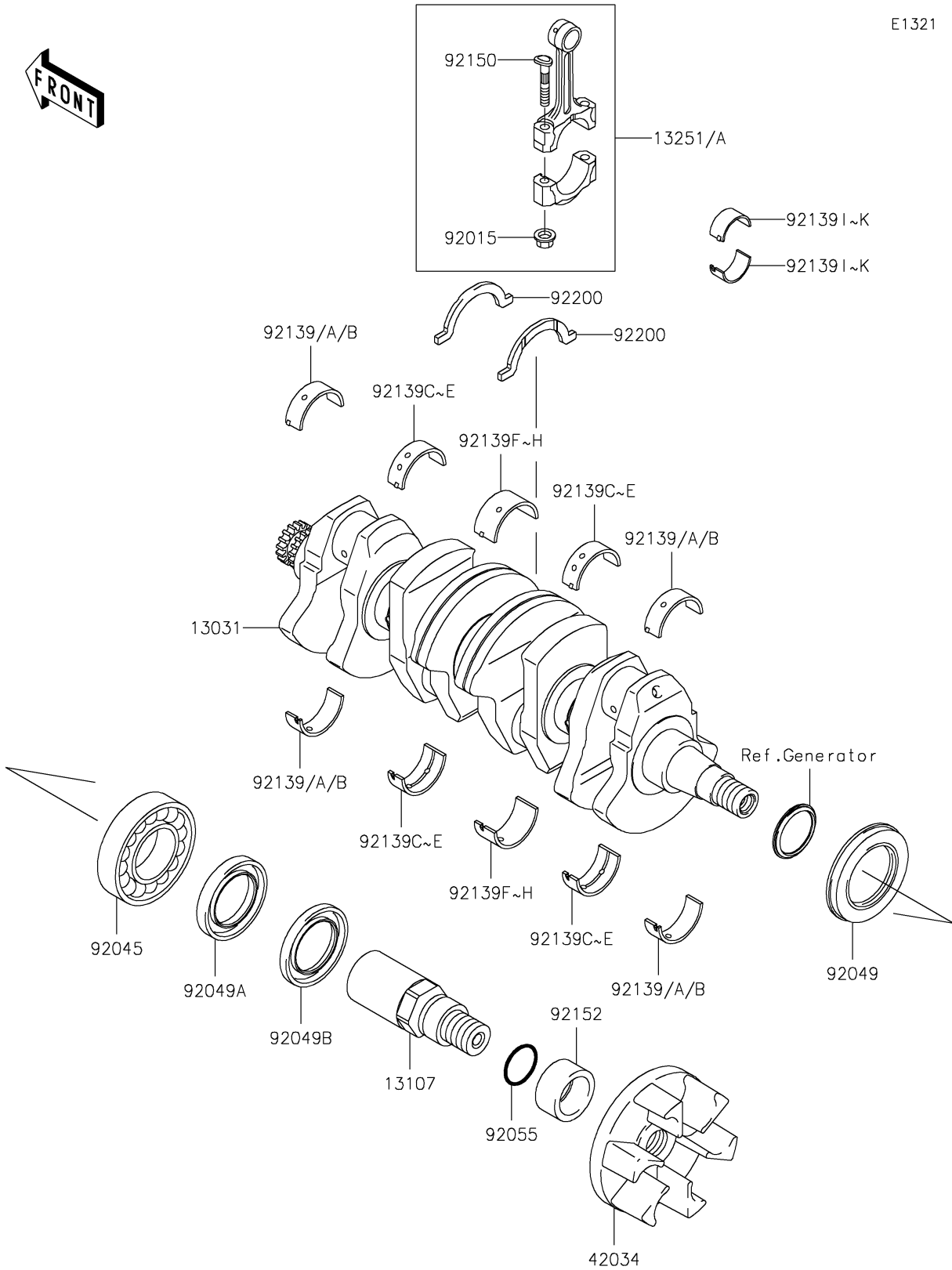


2010 Jet Ski® Ultra® LX PARTS DIAGRAM

Crankshaft

E1321



2010 Jet Ski® Ultra® LX PARTS LIST

Crankshaft

| ITEM NAME | PART NUMBER | QUANTITY |
|--|---------------|----------|
| CRANKSHAFT-COMP (Ref # 13031) | 13031-3742 | 1 |
| SHAFT (Ref # 13107) | 13107-3785 | 1 |
| ROD-ASSY-CONNECTING,I (Ref # 13251) | 13251-3702-II | 4 |
| ROD-ASSY-CONNECTING,J (Ref # 13251A) | 13251-3702-JJ | 4 |
| COUPLING (Ref # 42034) | 42034-3711 | 1 |
| NUT,CONNECTING ROD (Ref # 92015) | 92015-1559 | 8 |
| BEARING-BALL,6208ZZ AS2S (Ref # 92045) | 92045-3739 | 1 |
| SEAL-OIL,SD347626LHS (Ref # 92049) | 92049-3736 | 1 |
| SEAL-OIL,FPJ740628.5ZS (Ref # 92049A) | 92049-3737 | 1 |
| SEAL-OIL,S40626NS (Ref # 92049B) | 92049-3738 | 1 |
| RING-O,27.7X2.4 (Ref # 92055) | 92055-091 | 1 |
| BUSH,CRANK,#1,BLU,NA MODEL (Ref # 92139) | 92139-0942 | 4 |
| BUSH,CRANK,#1,BLK,NA MODEL (Ref # 92139A) | 92139-0943 | AR |
| BUSH,CRANK,#1,BRN,NA MODEL (Ref # 92139B) | 92139-0944 | AR |
| BUSH,CRANK,#2,BLU,NA MODEL (Ref # 92139C) | 92139-0945 | 4 |
| BUSH,CRANK,#2,BLK,NA MODEL (Ref # 92139D) | 92139-0946 | AR |
| BUSH,CRANK,#2,BRN,NA MODEL (Ref # 92139E) | 92139-0947 | AR |
| BUSH,CRANK,#3,BLU,NA MODEL (Ref # 92139F) | 92139-0948 | 2 |
| BUSH,CRANK,#3,BLK,NA MODEL (Ref # 92139G) | 92139-0949 | AR |
| BUSH,CRANK,#3,BRN,NA MODEL (Ref # 92139H) | 92139-0950 | AR |
| BUSHING,CONNECTING ROD,BLUE (Ref # 92139I) | 92139-3708 | 8 |
| BUSHING,CONNECTING ROD,BLACK (Ref # 92139J) | 92139-3709 | AR |
| BUSHING,CONNECTING ROD,BROWN (Ref # 92139K) | 92139-3710 | AR |
| BOLT,CONNECTING ROD,9MM (Ref # 92150) | 92150-1362 | 8 |
| COLLAR,OUTPUT RR,L=19.5 (Ref # 92152) | 92152-3733 | 1 |
| WASHER (Ref # 92200) | 92200-3789 | 2 |