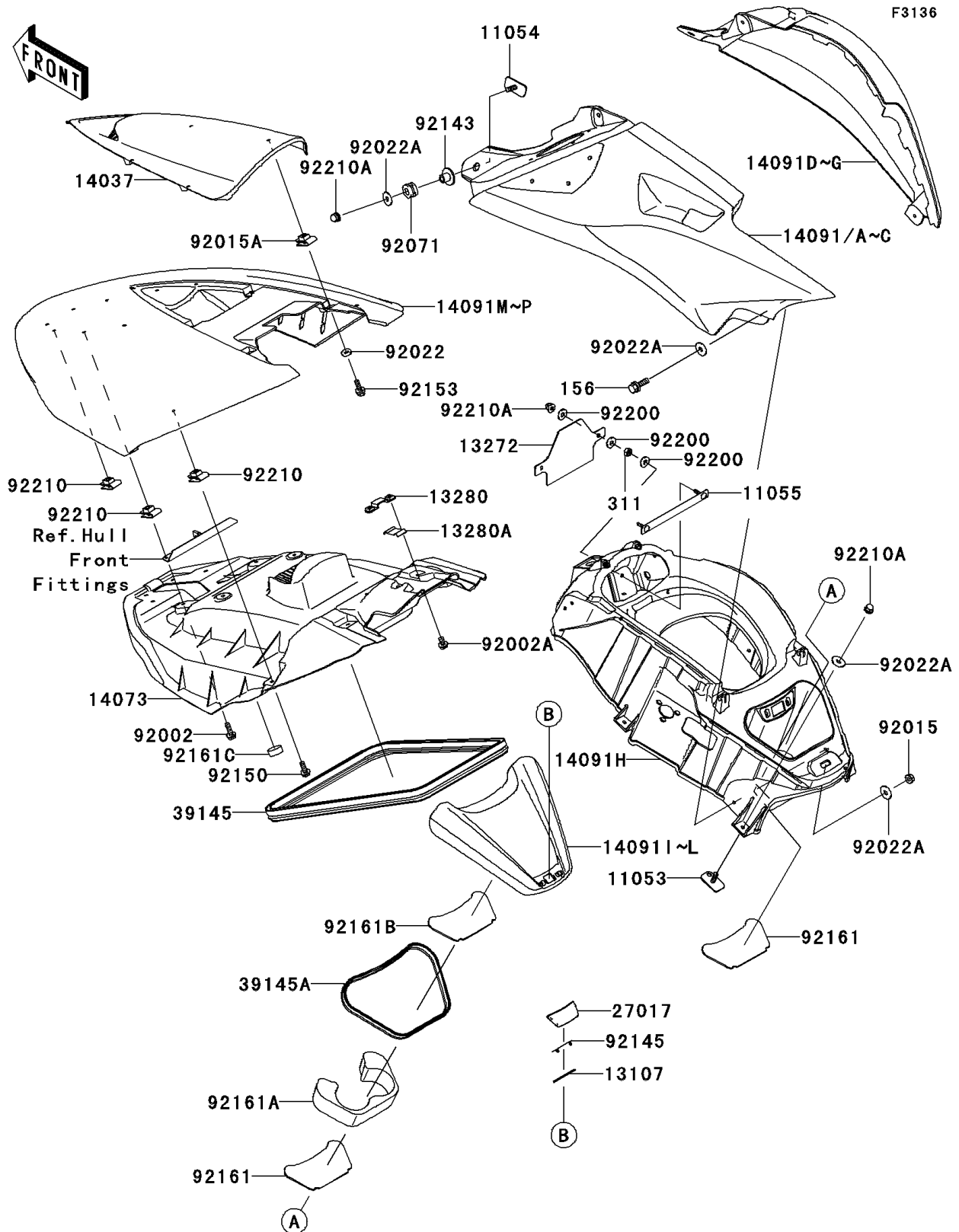


2008 Ultra 250X PARTS DIAGRAM

Hull Middle Fittings



2008 Ultra 250X PARTS LIST

Hull Middle Fittings

| ITEM NAME | PART NUMBER | QUANTITY |
|---|----------------|----------|
| BRACKET (Ref # 11053) | 11053-3776 | 6 |
| BRACKET (Ref # 11054) | 11054-3741 | 2 |
| BRACKET,INTAKE COVER (Ref # 11055) | 11055-3707 | 1 |
| SHAFT (Ref # 13107) | 13107-3790 | 1 |
| PLATE,INTAKE COVER (Ref # 13272) | 13272-3710 | 1 |
| HOLDER,ROD (Ref # 13280) | 13280-3749 | 1 |
| HOLDER,ROD (Ref # 13280A) | 13280-3751 | 1 |
| SCREEN,METER COVER (Ref # 14037) | 14037-3711 | 1 |
| DUCT,HATCH,INNER (Ref # 14073) | 14073-3806 | 1 |
| COVER,SIDE,LH,S.RED (Ref # 14091) | 14091-3780-H1 | 1 |
| COVER,SIDE,LH,BLUE (Ref # 14091B) | 14091-3780-16F | 1 |
| COVER,SIDE,LH,L.GREEN (Ref # 14091C) | 14091-3780-777 | 1 |
| COVER,SIDE,RH,S.RED (Ref # 14091D) | 14091-3781-H1 | 1 |
| COVER,SIDE,RH,BLUE (Ref # 14091F) | 14091-3781-16F | 1 |
| COVER,SIDE,RH,L.GREEN (Ref # 14091G) | 14091-3781-777 | 1 |
| COVER,HANDLE,F.BLACK (Ref # 14091H) | 14091-3782-6Z | 1 |
| COVER,CENTER STORAGE,S.RED (Ref # 14091I) | 14091-3783-H1 | 1 |
| COVER,CENTER STORAGE,BLUE (Ref # 14091K) | 14091-3783-16F | 1 |
| COVER,CENTER STORAGE,L.GREEN (Ref # 14091L) | 14091-3783-777 | 1 |
| COVER,HATCH,S.RED (Ref # 14091M) | 14091-3784-H1 | 1 |
| COVER,HATCH,BLUE (Ref # 14091O) | 14091-3784-16F | 1 |
| COVER,HATCH,L.GREEN (Ref # 14091P) | 14091-3784-777 | 1 |
| LOCK,CENTER STORAGE (Ref # 27017) | 27017-3726 | 1 |
| TRIM-SEAL (Ref # 39145) | 39145-3793 | 1 |
| TRIM-SEAL,L=720 (Ref # 39145A) | 39145-3802 | 1 |
| BOLT,6X20 (Ref # 92002) | 92002-3755 | 2 |
| BOLT,6X12 (Ref # 92002A) | 92002-3763 | 2 |
| NUT,LOCK,6MM (Ref # 92015) | 92015-3766 | 4 |
| NUT,CLIP,5MM (Ref # 92015A) | 92015-3830 | 4 |

2008 Ultra 250X PARTS LIST

Hull Middle Fittings

| ITEM NAME | PART NUMBER | QUANTITY |
|--------------------------------------|-------------|----------|
| WASHER,5X16X1.5 (Ref # 92022) | 92022-3041 | 4 |
| WASHER,6.5X20X1.5 (Ref # 92022A) | 92022-3710 | 16 |
| GROMMET (Ref # 92071) | 92071-3716 | 2 |
| COLLAR (Ref # 92143) | 92143-3750 | 2 |
| SPRING (Ref # 92145) | 92145-3729 | 1 |
| BOLT,6X18 (Ref # 92150) | 92150-3729 | 4 |
| BOLT,5X20 (Ref # 92153) | 92153-3744 | 4 |
| DAMPER,CENTER STORAGE (Ref # 92161) | 92161-3773 | 2 |
| DAMPER,CENTER STORAGE (Ref # 92161A) | 92161-3775 | 1 |
| DAMPER,CENTER STORAGE (Ref # 92161B) | 92161-3777 | 1 |
| DAMPER (Ref # 92161C) | 92161-3790 | 2 |
| WASHER,6.5X16X2.0 (Ref # 92200) | 92200-1543 | 6 |
| NUT,6MM (Ref # 92210) | 92210-3768 | 10 |
| NUT,CAP,6MM (Ref # 92210A) | 92210-3785 | 10 |
| BOLT-WP,6X20 (Ref # 156) | 156R0620 | 4 |
| NUT-HEX,6MM (Ref # 311) | 311R0600 | 2 |