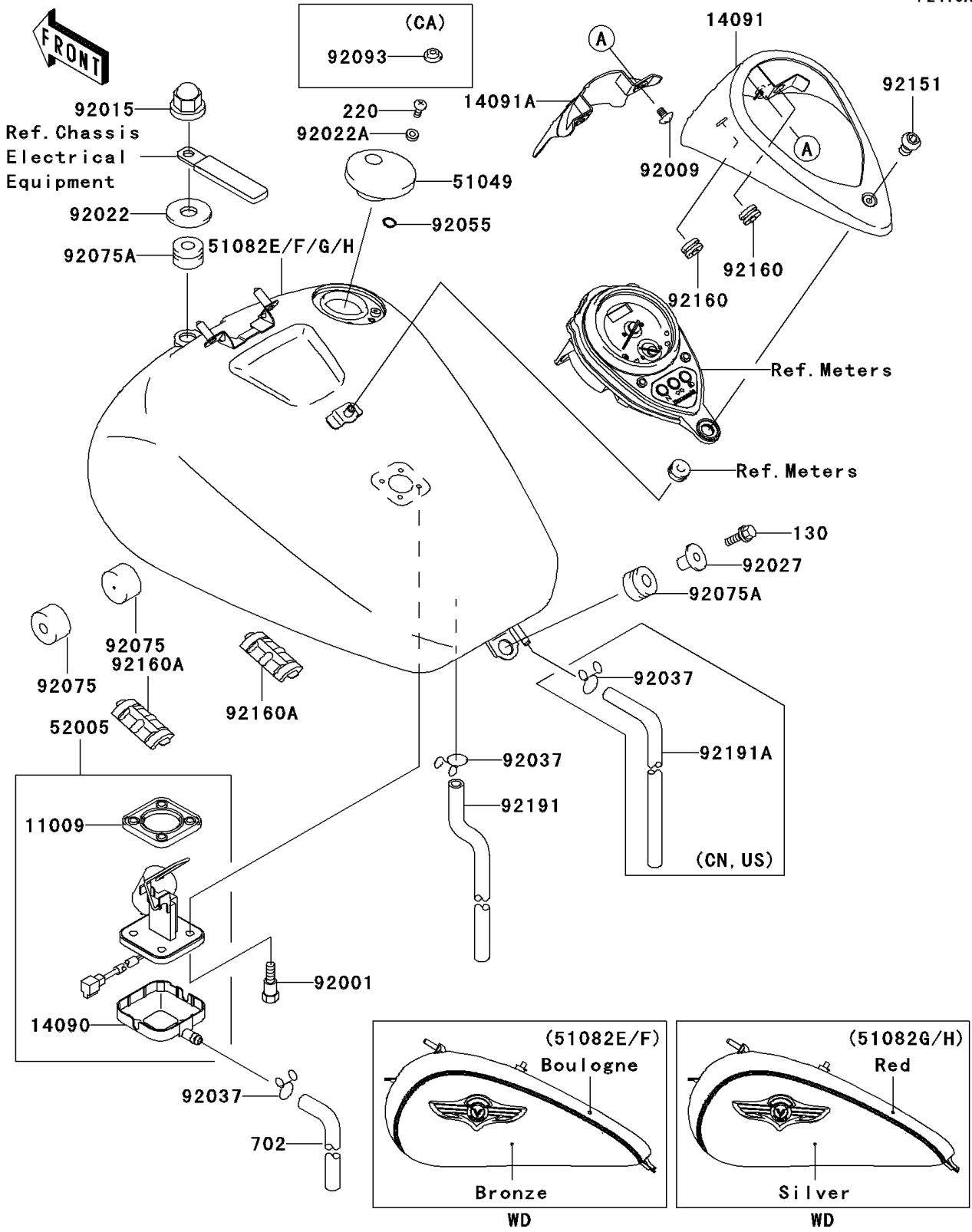


2002 Vulcan 1500 Classic Fi PARTS DIAGRAM

Fuel Tank(VN1500-N3)

F2410A



2002 Vulcan 1500 Classic Fi PARTS LIST

Fuel Tank(VN1500-N3)

ITEM NAME	PART NUMBER	QUANTITY
GASKET,FUEL GAUGE (Ref # 11009)	11009-1656	1
COVER,FUEL GAUGE (Ref # 14090)	14090-1624	1
COVER,METER (Ref # 14091)	14091-1208	1
COVER,METER,FR (Ref # 14091A)	14091-1301	1
CAP-TANK,FUEL (Ref # 51049)	51049-1126	1
GAUGE,FUEL (Ref # 52005)	52005-1138	1
BOLT,FUEL GAUGE (Ref # 92001)	92001-1705	4
SCREW,6X12 (Ref # 92009)	92009-1877	2
NUT,CAP,8MM,BLACK (Ref # 92015)	92015-1174	1
WASHER,8X26X2.3 (Ref # 92022)	92022-1345	1
BOLT-FLANGED,8X30 (Ref # 130)	130H0830	1
SCREW-PAN-CROS (Ref # 220)	220D0510	2
TUBE-RUBBER,7X10X860 (Ref # 702)	702A07860	1
WASHER,5.1X10X1.0 (Ref # 92022A)	92022-1977	2
COLLAR,L=19.3 (Ref # 92027)	92027-1780	1
RING-O (Ref # 92055)	92055-1023	2
DAMPER,FUEL TANK (Ref # 92075)	92075-125	2
DAMPER (Ref # 92075A)	92075-1736	2
BOLT,SOCKET,6X10 (Ref # 92151)	92151-1449	1
DAMPER (Ref # 92160)	92160-1162	2
DAMPER,FUEL TANK (Ref # 92160A)	92160-1907	2
TUBE,DRAIN (Ref # 92191)	92191-1272	1
TANK-COMP-FUEL,BOULOGNE/BRONZE (Ref # 51082E)	51082-5077-223	1
TANK-COMP-FUEL,BOULOGNE/BRONZE (Ref # 51082F)	51082-5078-223	1
TANK-COMP-FUEL,RED/SILVER (Ref # 51082G)	51082-5079-224	1
TANK-COMP-FUEL,RED/SILVER (Ref # 51082H)	51082-5080-224	1
CLAMP,TUBE (Ref # 92037)	92037-147	2
CLAMP,TUBE (Ref # 92037)	92037-147	3
SEAL,FUEL TANK CAP (Ref # 92093)	92093-1030	1