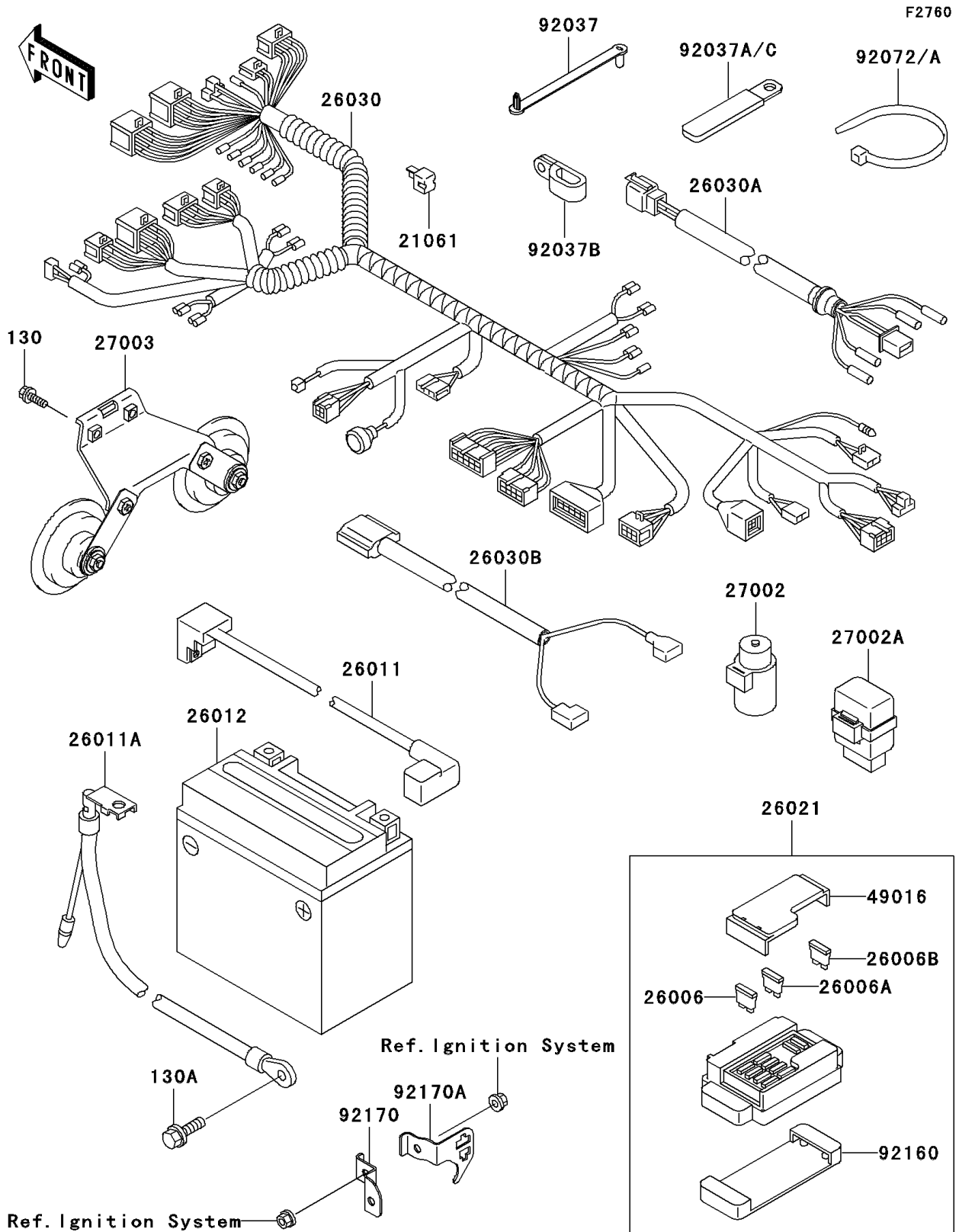


## 1999 Vulcan 1500 Drifter PARTS DIAGRAM

Chassis Electrical Equipment



## 1999 Vulcan 1500 Drifter PARTS LIST

Chassis Electrical Equipment

ITEM NAME	PART NUMBER	QUANTITY
BOLT-FLANGED,6X30,BLACK (Ref # 130)	130J0630	1
BOLT-FLANGED,6X10 (Ref # 130A)	130V0610	1
RECTIFIER (Ref # 21061)	21061-1003	1
FUSE,30A-G (Ref # 26006)	26006-1067	1
FUSE,10A-R (Ref # 26006A)	26006-1068	1
FUSE,15A-B (Ref # 26006B)	26006-1069	1
WIRE-LEAD,BATTERY(+) (Ref # 26011)	26011-1764	1
WIRE-LEAD,BATTERY(-) (Ref # 26011A)	26011-1765	1
BATTERY,MF,FTZ16-BS,12V 18AH (Ref # 26012)	26012-1371	1
JUNCTION BOX (Ref # 26021)	26021-1096	1
HARNESS,MAIN (Ref # 26030)	26030-1618	1
HARNESS,TAIL (Ref # 26030A)	26030-1633	1
HARNESS,OIL PRESSURE&NEUTRAL (Ref # 26030B)	26030-1636	1
RELAY-ASSY (Ref # 27002)	27002-1051	1
RELAY-ASSY,SIGNAL LAMP (Ref # 27002A)	27002-1111	1
HORN (Ref # 27003)	27003-1406	1
COVER-SEAL,FUSE (Ref # 49016)	49016-1177	1
CLAMP,SPEED,L=43 (Ref # 92037)	92037-1290	1
CLAMP,L=45 (Ref # 92037A)	92037-1539	1
CLAMP (Ref # 92037B)	92037-1608	1
BAND,L=202 (Ref # 92072)	92072-1195	1
DAMPER,JUNCTION BOX (Ref # 92160)	92160-1650	1
CLAMP,IGNITION SWITCH (Ref # 92170)	92170-1699	1
CLAMP,RR BRAKE SWITCH (Ref # 92170A)	92170-1700	1