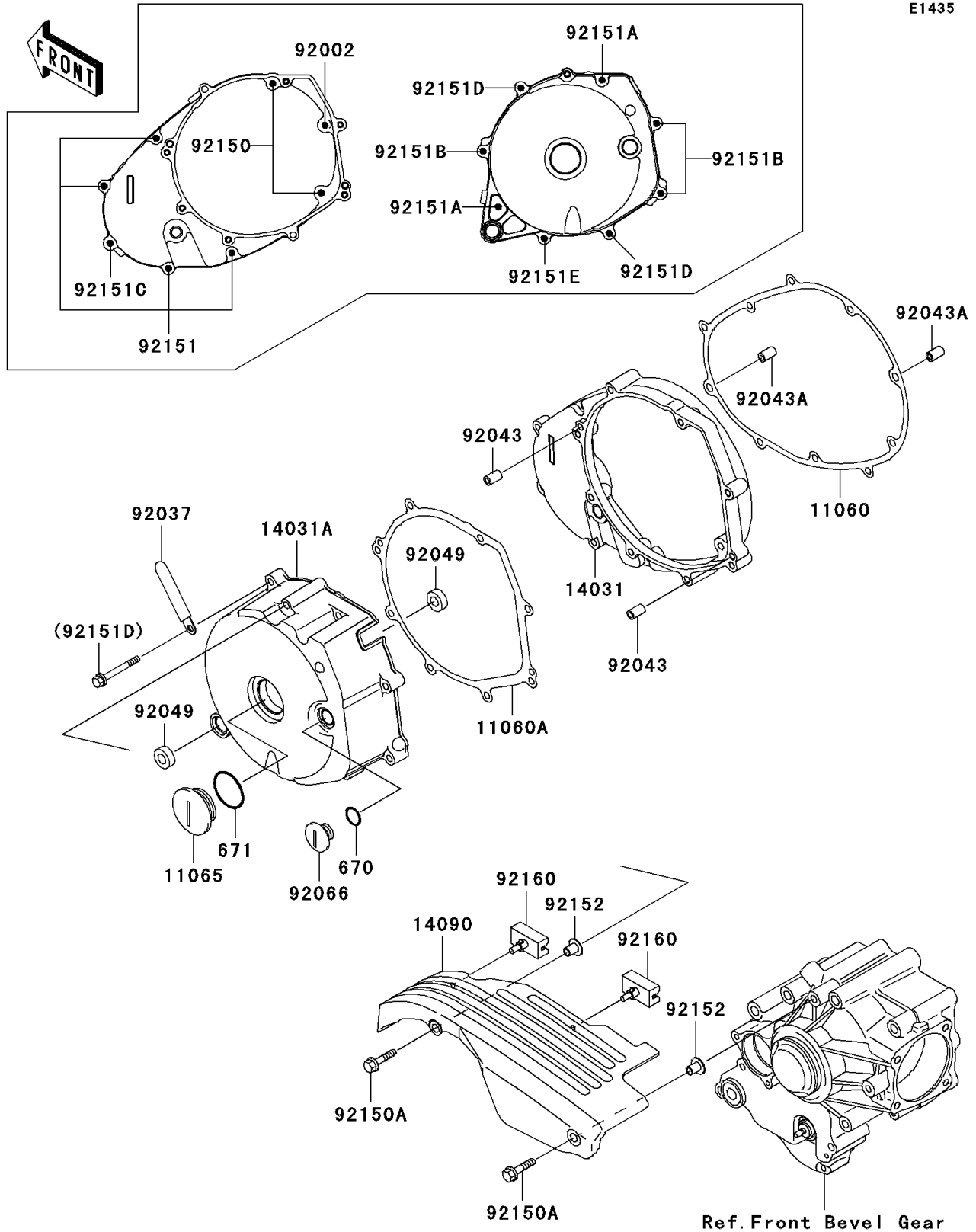


1999 Vulcan 1500 Drifter PARTS DIAGRAM

Left Engine Cover(s)

E1435



1999 Vulcan 1500 Drifter PARTS LIST

Left Engine Cover(s)

| ITEM NAME | PART NUMBER | QUANTITY |
|---|-------------|----------|
| O RING,18MM (Ref # 670) | 670B2018 | 1 |
| O RING,40MM (Ref # 671) | 671B2540 | 1 |
| GASKET,GENERATOR COVER,IN (Ref # 11060) | 11060-1838 | 1 |
| GASKET,GENERATOR COVER,OUT (Ref # 11060A) | 11060-1839 | 1 |
| CAP,GENERATOR (Ref # 11065) | 11065-1113 | 1 |
| COVER-GENERATOR,INNER (Ref # 14031) | 14031-1364 | 1 |
| COVER-GENERATOR,OUTER (Ref # 14031A) | 14031-1365 | 1 |
| COVER (Ref # 14090) | 14090-1987 | 1 |
| BOLT,6X40 (Ref # 92002) | 92002-1566 | 1 |
| CLAMP,L=45 (Ref # 92037) | 92037-1539 | 1 |
| PIN,4.2X6X12 (Ref # 92043) | 92043-1262 | 2 |
| PIN,6.2X8X14 (Ref # 92043A) | 92043-1263 | 2 |
| SEAL-OIL,VB13193 (Ref # 92049) | 92049-1398 | 2 |
| PLUG (Ref # 92066) | 92066-1482 | 1 |
| BOLT,6X30 (Ref # 92150) | 92150-1021 | 2 |
| BOLT,6X25 (Ref # 92150A) | 92150-1829 | 2 |
| BOLT,6X25 (Ref # 92151) | 92151-1130 | 4 |
| BOLT,6X40 (Ref # 92151A) | 92151-1131 | 2 |
| BOLT,6X30 (Ref # 92151B) | 92151-1134 | 3 |
| BOLT,6X35 (Ref # 92151C) | 92151-1135 | 1 |
| BOLT,6X60 (Ref # 92151D) | 92151-1235 | 2 |
| BOLT,6X20 (Ref # 92151E) | 92151-1252 | 1 |
| COLLAR (Ref # 92152) | 92152-1123 | 2 |
| DAMPER (Ref # 92160) | 92160-1977 | 2 |