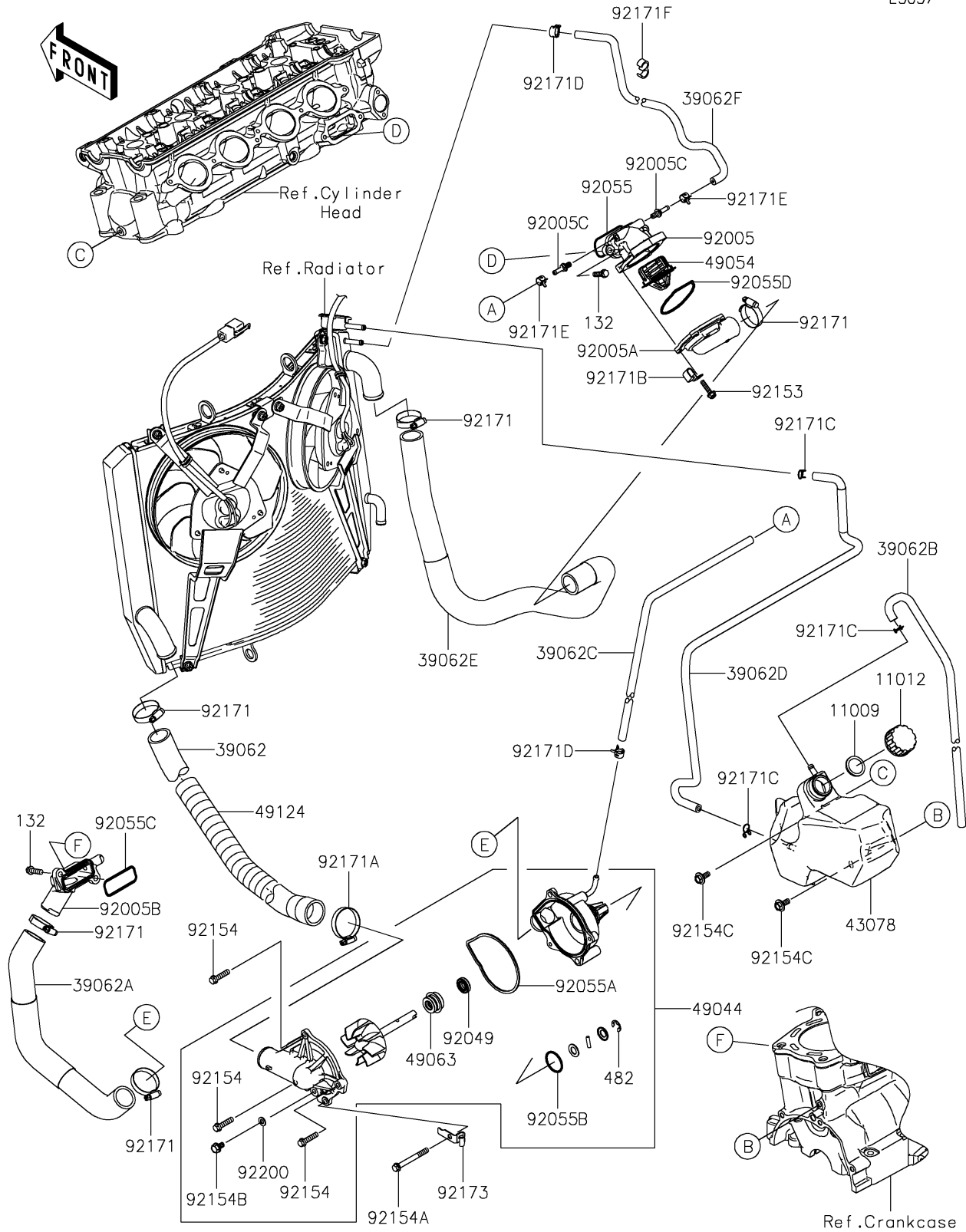


# 2022 Concours®14 ABS PARTS DIAGRAM

Water Pipe

E3037



## 2022 Concours®14 ABS PARTS LIST

### Water Pipe

| ITEM NAME                                 | PART NUMBER | QUANTITY |
|-------------------------------------------|-------------|----------|
| GASKET,RESERVOIR TANK CAP (Ref # 11009)   | 11009-1145  | 1        |
| CAP (Ref # 11012)                         | 11012-1084  | 1        |
| HOSE-COOLING,RAD-W/P (Ref # 39062)        | 39062-0113  | 1        |
| HOSE-COOLING,W/P-CYL.HEAD (Ref # 39062A)  | 39062-0114  | 1        |
| HOSE-COOLING,L=597 (Ref # 39062B)         | 39062-0151  | 1        |
| HOSE-COOLING,4X10X490 (Ref # 39062C)      | 39062-0170  | 1        |
| HOSE-COOLING,L=797 (Ref # 39062D)         | 39062-0218  | 1        |
| HOSE-COOLING,CYL.HEAD-RAD. (Ref # 39062E) | 39062-0306  | 1        |
| HOSE-COOLING,AIR VENT (Ref # 39062F)      | 39062-0596  | 1        |
| RESERVOIR (Ref # 43078)                   | 43078-0063  | 1        |
| PUMP-WATER (Ref # 49044)                  | 49044-0012  | 1        |
| THERMOSTAT (Ref # 49054)                  | 49054-0004  | 1        |
| SEAL-MECHANICAL (Ref # 49063)             | 49063-0001  | 1        |
| SPRING-TUBE GUARD (Ref # 49124)           | 49124-0003  | 1        |
| FITTING,THERMO CASE (Ref # 92005)         | 92005-0047  | 1        |
| FITTING,THERMO CAP (Ref # 92005A)         | 92005-0814  | 1        |
| FITTING,CYLINDER (Ref # 92005B)           | 92005-0815  | 1        |
| FITTING (Ref # 92005C)                    | 92005-0826  | 2        |
| SEAL-OIL (Ref # 92049)                    | 92049-0752  | 1        |
| RING-O,YP 27.6 57.6 1.9 (Ref # 92055)     | 92055-0021  | 1        |
| RING-O (Ref # 92055A)                     | 92055-0770  | 1        |
| RING-O (Ref # 92055B)                     | 92055-0771  | 1        |
| RING-O (Ref # 92055C)                     | 92055-1402  | 1        |
| RING-O,THERMOSTAT CAP (Ref # 92055D)      | 92055-1699  | 1        |
| BOLT,FLANGED,5X18 (Ref # 92153)           | 92153-1588  | 4        |
| BOLT,FLANGED,6X25 (Ref # 92154)           | 92154-1287  | 3        |
| BOLT,FLANGED,6X55 (Ref # 92154A)          | 92154-1288  | 1        |
| BOLT,DRAIN (Ref # 92154B)                 | 92154-1362  | 1        |
| BOLT,UPSET-WP,6X16 (Ref # 92154C)         | 92154-1850  | 2        |

## 2022 Concours®14 ABS PARTS LIST

### Water Pipe

| ITEM NAME                           | PART NUMBER | QUANTITY |
|-------------------------------------|-------------|----------|
| CLAMP (Ref # 92171)                 | 92171-0179  | 5        |
| CLAMP (Ref # 92171A)                | 92171-0180  | 1        |
| CLAMP (Ref # 92171B)                | 92171-0534  | 1        |
| CLAMP (Ref # 92171C)                | 92171-0718  | 3        |
| CLAMP (Ref # 92171D)                | 92171-0719  | 2        |
| CLAMP (Ref # 92171E)                | 92171-0720  | 2        |
| CLAMP (Ref # 92171F)                | 92171-1184  | 1        |
| CLAMP (Ref # 92173)                 | 92173-0114  | 1        |
| WASHER,DRAIN (Ref # 92200)          | 92200-0498  | 1        |
| BOLT-FLANGED-SMALL,6X20 (Ref # 132) | 132BC0620   | 4        |
| CIRCLIP-TYPE-E,8MM (Ref # 482)      | 482EA8000   | 1        |