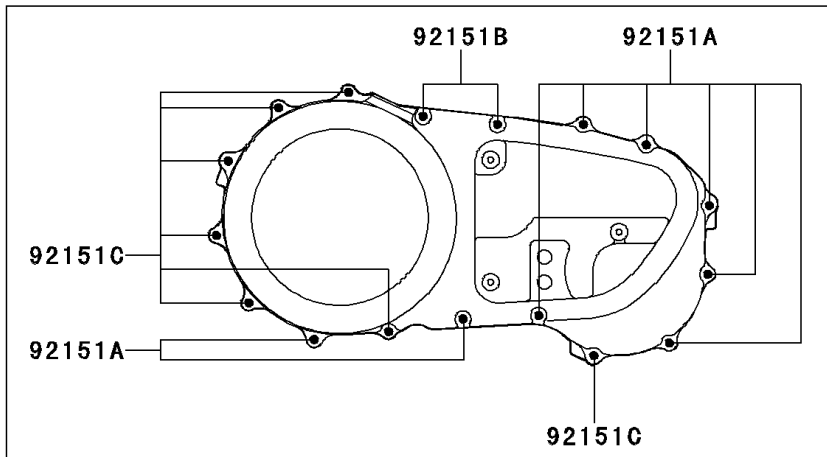
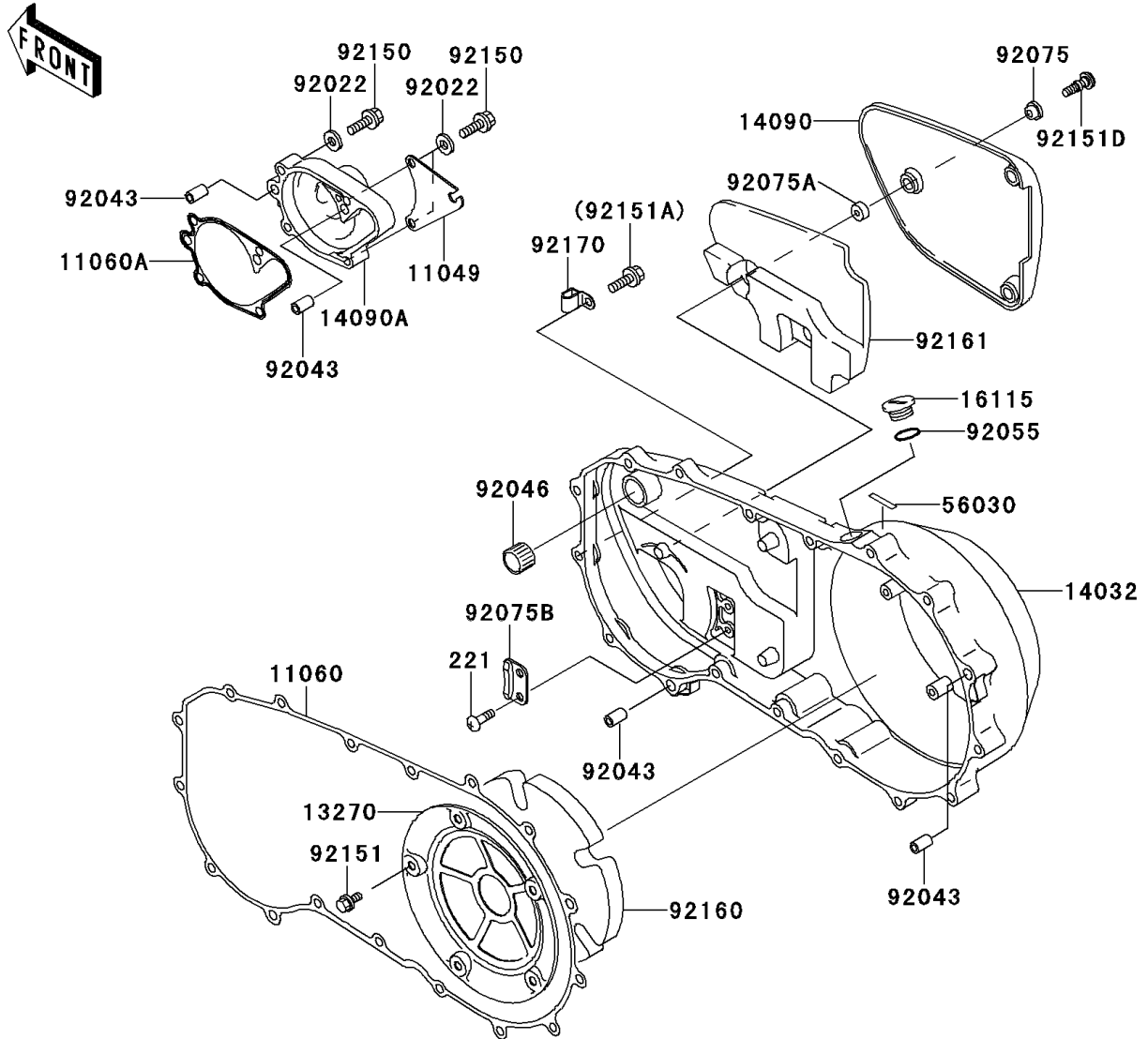


# 1999 Vulcan 1500 Nomad PARTS DIAGRAM

Right Engine Cover(s)(VN1500-G1)

E1436



# 1999 Vulcan 1500 Nomad PARTS LIST

Right Engine Cover(s)(VN1500-G1)

| ITEM NAME                              | PART NUMBER | QUANTITY |
|--|-------------|----------|
| SCREW-CSK-CROS,6X12 (Ref # 221)        | 221B0612    | 2        |
| BRACKET (Ref # 11049)                  | 11049-1789  | 1        |
| GASKET,CLUTCH COVER (Ref # 11060)      | 11060-1121  | 1        |
| GASKET,WATER PUMP COVER (Ref # 11060A) | 11060-1124  | 1        |
| PLATE (Ref # 13270)                    | 13270-1592  | 1        |
| COVER-CLUTCH (Ref # 14032)             | 14032-1435  | 1        |
| COVER,CLUTCH OUTER (Ref # 14090)       | 14090-1678  | 1        |
| COVER,WATER PUMP (Ref # 14090A)        | 14090-1932  | 1        |
| CAP-OIL FILLER (Ref # 16115)           | 16115-1063  | 1        |
| LABEL,OIL CAPACITY (Ref # 56030)       | 56030-1184  | 1        |
| WASHER,6.1X12X1 (Ref # 92022)          | 92022-077   | 4        |
| PIN,6.2X8X14 (Ref # 92043)             | 92043-1263  | 4        |
| BEARING-NEEDLE,HK1212 (Ref # 92046)    | 92046-1163  | 1        |
| RING-O,31.7X2.4 (Ref # 92055)          | 92055-049   | 1        |
| DAMPER (Ref # 92075)                   | 92075-1855  | 3        |
| DAMPER (Ref # 92075A)                  | 92075-1856  | 3        |
| DAMPER (Ref # 92075B)                  | 92075-1905  | 1        |
| BOLT,6X30 (Ref # 92150)                | 92150-1021  | 4        |
| BOLT,6X10 (Ref # 92151)                | 92151-1064  | 5        |
| BOLT,6X25 (Ref # 92151A)               | 92151-1130  | 8        |
| BOLT,6X30 (Ref # 92151B)               | 92151-1134  | 2        |
| BOLT,6X35 (Ref # 92151C)               | 92151-1135  | 7        |
| BOLT,L=22.5 (Ref # 92151D)             | 92151-1273  | 3        |
| DAMPER (Ref # 92160)                   | 92160-1716  | 1        |
| DAMPER,DRAIN (Ref # 92161)             | 92161-1139  | 1        |
| CLAMP,METER HARNESS (Ref # 92170)      | 92170-1804  | 1        |