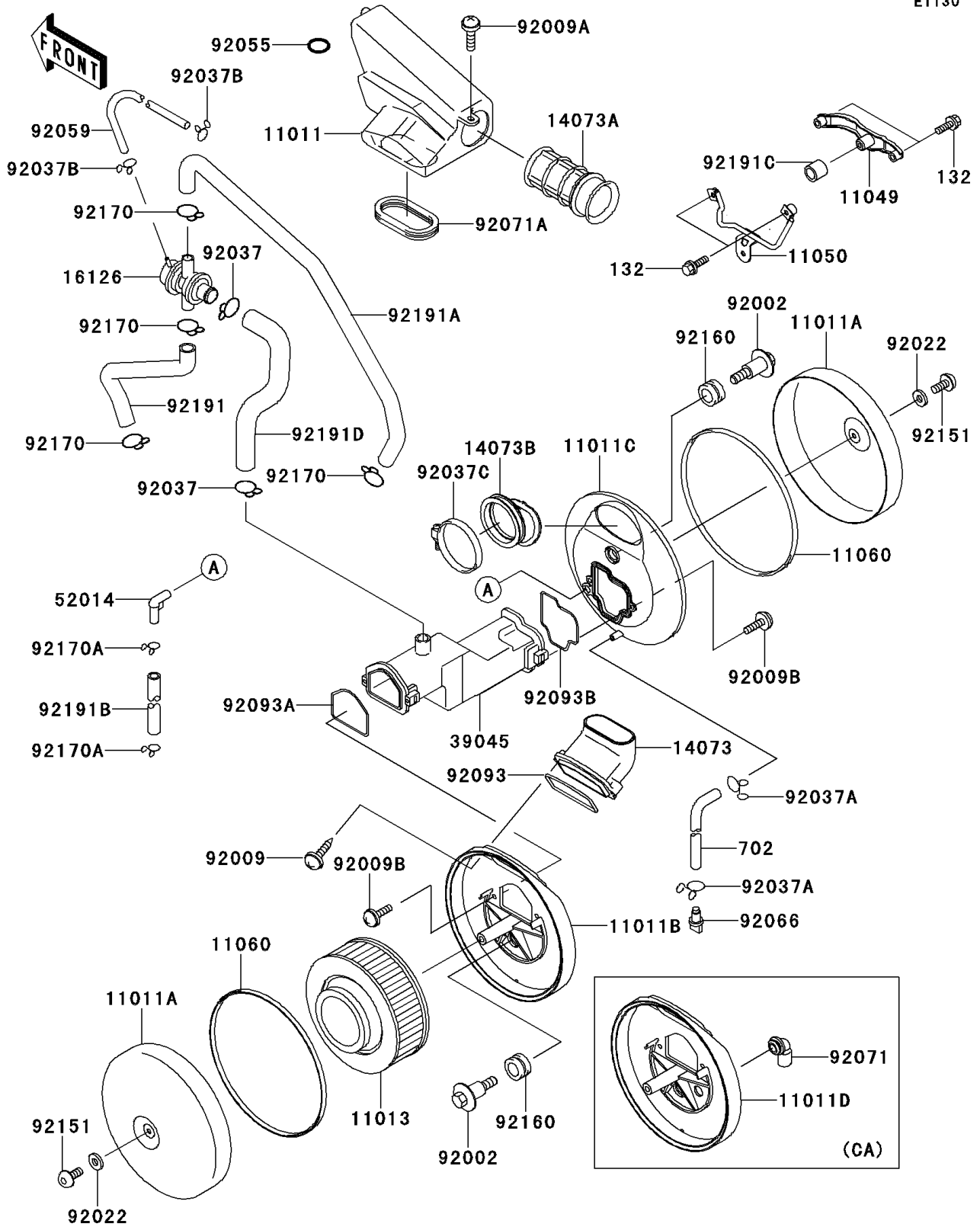


# 2000 Vulcan 1500 Nomad PARTS DIAGRAM

Air Cleaner

E1130



## 2000 Vulcan 1500 Nomad PARTS LIST

### Air Cleaner

| ITEM NAME                               | PART NUMBER | QUANTITY |
|---|-------------|----------|
| CASE-AIR FILTER,CENTER (Ref # 11011)    | 11011-1488  | 1        |
| CASE-AIR FILTER,OUTSIDE (Ref # 11011A)  | 11011-1489  | 2        |
| CASE-AIR FILTER,RH (Ref # 11011C)       | 11011-1529  | 1        |
| ELEMENT-AIR FILTER (Ref # 11013)        | 11013-1248  | 1        |
| BRACKET,AIR FILTER,RH (Ref # 11049)     | 11049-1539  | 1        |
| BRACKET,AIR FILTER,LH (Ref # 11050)     | 11050-1510  | 1        |
| GASKET,AIR FILTER CASE,LH (Ref # 11060) | 11060-1736  | 2        |
| DUCT,AIR FILTER,LH (Ref # 14073)        | 14073-1658  | 1        |
| DUCT (Ref # 14073A)                     | 14073-1660  | 1        |
| DUCT,AIR FILTER,RH (Ref # 14073B)       | 14073-1712  | 1        |
| VALVE,AIR SWITCH (Ref # 16126)          | 16126-1356  | 1        |
| DUCT-ASSY (Ref # 39045)                 | 39045-1056  | 1        |
| ELBOW (Ref # 52014)                     | 52014-1083  | 1        |
| BOLT (Ref # 92002)                      | 92002-1595  | 2        |
| SCREW,TAPPING,5X16 (Ref # 92009)        | 92009-1264  | 2        |
| SCREW,6X14 (Ref # 92009A)               | 92009-1288  | 1        |
| SCREW,5X20 (Ref # 92009B)               | 92009-1905  | 4        |
| WASHER,6.5X20X1.6,WHITE (Ref # 92022)   | 92022-193   | 2        |
| CLAMP,TUBE (Ref # 92037)                | 92037-1076  | 2        |
| CLAMP,TUBE (Ref # 92037A)               | 92037-147   | 2        |
| CLAMP (Ref # 92037B)                    | 92037-1712  | 2        |
| CLAMP (Ref # 92037C)                    | 92037-1859  | 1        |
| RING-O (Ref # 92055)                    | 92055-1282  | 1        |
| TUBE,4X9X290 (Ref # 92059)              | 92059-1133  | 1        |
| PLUG,DRAIN (Ref # 92066)                | 92066-1211  | 1        |
| GROMMET (Ref # 92071A)                  | 92071-1233  | 1        |
| SEAL,AIR FILTER CASE (Ref # 92093)      | 92093-1408  | 1        |
| SEAL,DUCT,LH (Ref # 92093A)             | 92093-1459  | 1        |
| SEAL,DUCT,RH (Ref # 92093B)             | 92093-1460  | 1        |

## 2000 Vulcan 1500 Nomad PARTS LIST

### Air Cleaner

| ITEM NAME                              | PART NUMBER | QUANTITY |
|--|-------------|----------|
| BOLT,6X14 (Ref # 92151)                | 92151-1503  | 2        |
| DAMPER (Ref # 92160)                   | 92160-1594  | 2        |
| CLAMP,TUBE (Ref # 92170)               | 92170-1445  | 4        |
| CLAMP (Ref # 92170A)                   | 92170-1695  | 2        |
| BOLT-FLANGED-SMALL (Ref # 132)         | 132J0625    | 4        |
| TUBE-RUBBER (Ref # 702)                | 702A07260   | 1        |
| TUBE,HEAD,FR-AIR SWITCH (Ref # 92191)  | 92191-1050  | 1        |
| TUBE,HEAD,RR-AIR SWITCH (Ref # 92191A) | 92191-1051  | 1        |
| TUBE,BREATHER (Ref # 92191B)           | 92191-1054  | 1        |
| TUBE,15.5X22.5X20 (Ref # 92191C)       | 92191-1089  | 1        |
| TUBE,AIR SWITCH-DUCT (Ref # 92191D)    | 92191-1266  | 1        |
| CASE-AIR FILTER,LH (Ref # 11011B)      | 11011-1528  | 1        |
| CASE-AIR FILTER,LH (Ref # 11011D)      | 11011-1533  | 1        |
| GROMMET,AIR FILTER (Ref # 92071)       | 92071-1114  | 1        |