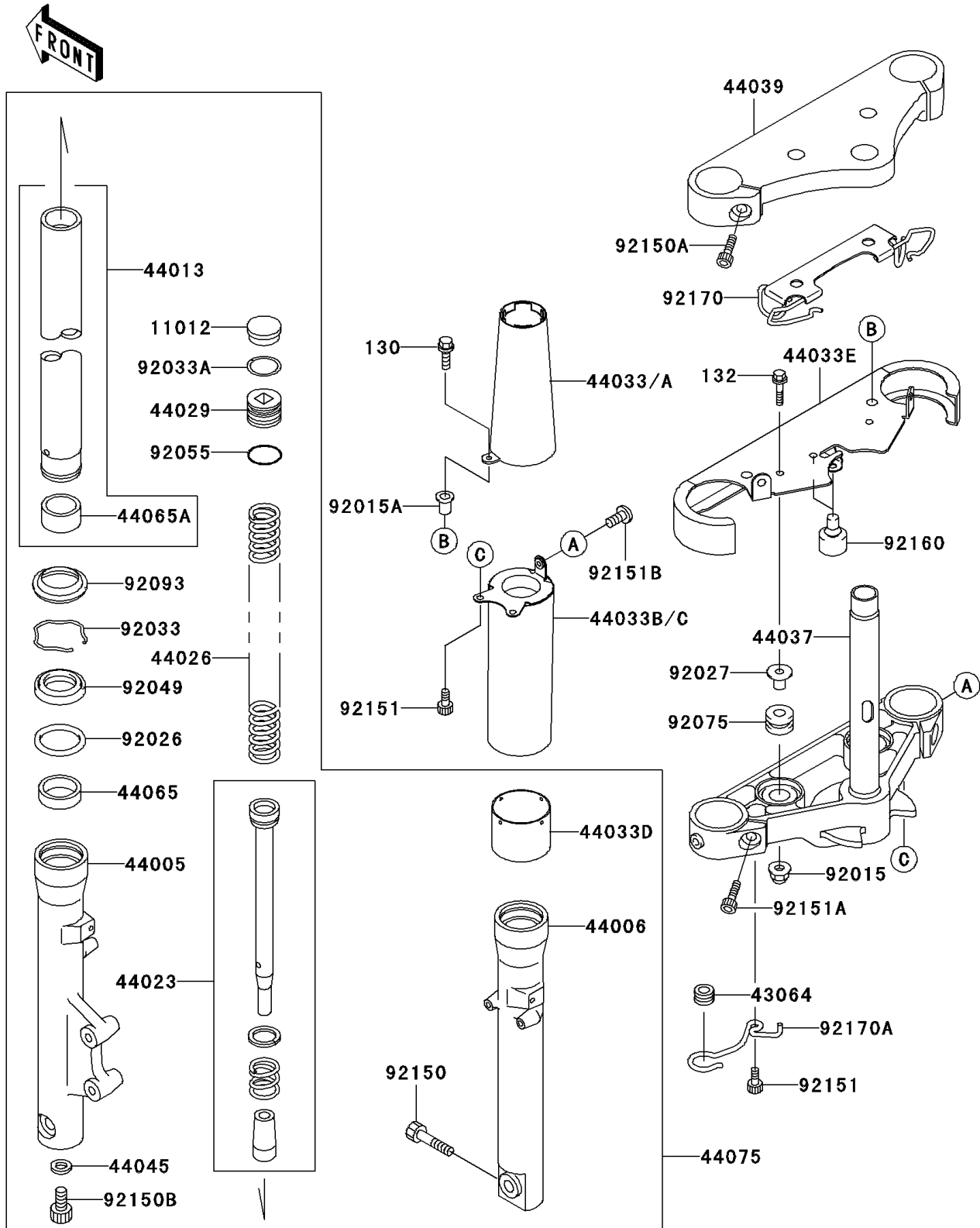


# 2000 Vulcan 1500 Classic

## PARTS DIAGRAM

### Front Fork

F2340



# 2000 Vulcan 1500 Classic

## PARTS LIST

### Front Fork

ITEM NAME	PART NUMBER	QUANTITY
BOLT-FLANGED (Ref # 130)	130J0516	2
CAP,FORK TOP (Ref # 11012)	11012-1618	2
GROMMET,HOSE CLAMP (Ref # 43064)	43064-006	1
PIPE-LEFT FORK OUTER (Ref # 44005)	44005-1366	1
PIPE-RIGHT FORK OUTER (Ref # 44006)	44006-1365	1
PIPE-FORK INNER (Ref # 44013)	44013-1462	2
CYLINDER-SET-FORK (Ref # 44023)	44023-1133	2
SPRING-FRONT FORK (Ref # 44026)	44026-1693	2
SEAT-FORK SPRING (Ref # 44029)	44029-1125	2
COVER-FORK,UPP,LH (Ref # 44033)	44033-1215	1
COVER-FORK,UPP,RH (Ref # 44033A)	44033-1216	1
COVER-FORK,UNDER,LH (Ref # 44033B)	44033-1221	1
COVER-FORK,UNDER,RH (Ref # 44033C)	44033-1222	1
COVER-FORK (Ref # 44033D)	44033-1223	2
COVER-FORK,LWR (Ref # 44033E)	44033-1235	1
HOLDER-FORK UNDER (Ref # 44037)	44037-1344	1
HOLDER-FORK UPPER (Ref # 44039)	44039-1260	1
GASKET,FORK CYLINDER BOLT (Ref # 44045)	44045-051	2
BUSHING-FRONT FORK (Ref # 44065)	44065-1079	2
BUSHING-FRONT FORK,INNER PIPE (Ref # 44065A)	44065-1087	2
DAMPER-SET-FORK (Ref # 44075)	44075-1095	1
NUT,CAP,6MM (Ref # 92015)	92015-1385	2
NUT,WELL,5MM (Ref # 92015A)	92015-1757	2
SPACER,FORK OUTER (Ref # 92026)	92026-1276	2
COLLAR,L=16.1 (Ref # 92027)	92027-1847	2
RING-SNAP (Ref # 92033)	92033-1222	2
RING-SNAP,SPRING SEAT (Ref # 92033A)	92033-1223	2
SEAL-OIL,FORK (Ref # 92049)	92049-1363	2
RING-O,SPRING SEAT (Ref # 92055)	92055-1363	2

# 2000 Vulcan 1500 Classic

## PARTS LIST

### Front Fork

ITEM NAME	PART NUMBER	QUANTITY
DAMPER (Ref # 92075)	92075-1035	2
SEAL,FORK (Ref # 92093)	92093-1268	2
BOLT,SOCKET,10X40 (Ref # 92150)	92150-1029	1
BOLT,SOCKET,8X30 (Ref # 92150A)	92150-1031	2
BOLT,SOCKET,8X18 (Ref # 92150B)	92150-1432	2
BOLT,SOCKET,6X14 (Ref # 92151)	92151-1068	4
BOLT,SOCKET,10X25 (Ref # 92151A)	92151-1083	2
BOLT,SOCKET,5X10 (Ref # 92151B)	92151-1097	2
DAMPER (Ref # 92160)	92160-1555	2
CLAMP,CABLE (Ref # 92170)	92170-1655	1
CLAMP,CABLE (Ref # 92170A)	92170-1658	1
BOLT-FLANGED-SMALL (Ref # 132)	132E0630	2